



[Go to Product page](#)

Datasheet for ABIN6744253
anti-JHDM1D antibody (AA 288-337)

1 Image

Overview

Quantity:	100 µL
Target:	JHDM1D
Binding Specificity:	AA 288-337
Reactivity:	Human, Mouse, Rat, Rabbit, Dog, Pig, Chicken, Cow, Guinea Pig, Horse
Host:	Rabbit
Clonality:	Polyclonal
Conjugate:	This JHDM1D antibody is un-conjugated
Application:	Western Blotting (WB)

Product Details

Immunogen:	Synthetic peptide located between aa288-337 of human JHDM1D (Q6ZMT4, NP_085150). Percent identity by BLAST analysis: Human, Chimpanzee, Gorilla, Mouse, Rat, Bovine, Rabbit, Horse, Pig, Guinea pig, Chicken (100%), Gibbon, Monkey, Marmoset (92%), Galago (85%), Elephant, Dog (84%). Type of Immunogen: Synthetic peptide
Specificity:	Human JHDM1D
Predicted Reactivity:	Percent identity by BLAST analysis: Rabbit (92%) Dog (84%).
Purification:	Immunoaffinity purified

Target Details

Target:	JHDM1D
Alternative Name:	KDM7A / JHDM1D (JHDM1D Products)
Background:	Name/Gene ID: KDM7A Synonyms: KDM7A, KIAA1718, Lysine-specific demethylase 7, JHDM1D, KDM7
Gene ID:	80853
NCBI Accession:	NP_085150
UniProt:	Q6ZMT4

Application Details

Application Notes:	Approved: WB (0.2 - 1 µg/mL) Usage: Western Blot: Suggested dilution at 1 µg/mL in 5 % skim milk / PBS buffer, and HRP conjugated anti-Rabbit IgG should be diluted in 1: 50,000 - 100,000 as secondary antibody.
Comment:	Target Species of Antibody: Human
Restrictions:	For Research Use only

Handling

Format:	Lyophilized
Reconstitution:	Distilled water
Concentration:	Lot specific
Buffer:	Lyophilized from PBS with 2 % sucrose
Handling Advice:	Avoid repeat freeze-thaw cycles.
Storage:	4 °C, -20 °C
Storage Comment:	Long term: -20°C, the use of 50% glycerol is recommended if storing aliquots in -20°C for long term use (up to 1 year) Short term (less than 1 week): 4°C. Avoid freeze-thaw cycles.

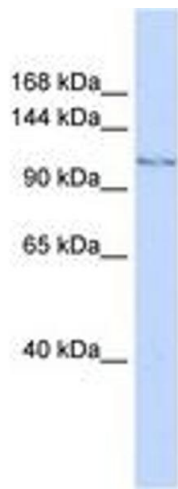


Image 1.