



[Go to Product page](#)

Datasheet for ABIN6744259
anti-PTGES3 antibody (C-Term)

1 Image

Overview

Quantity:	100 µL
Target:	PTGES3
Binding Specificity:	C-Term
Reactivity:	Human, Rat, Mouse, Rabbit, Guinea Pig, Cow, Dog, Horse, Zebrafish (Danio rerio), Pig, Monkey, Bat
Host:	Rabbit
Clonality:	Polyclonal
Conjugate:	This PTGES3 antibody is un-conjugated
Application:	Western Blotting (WB)

Product Details

Immunogen:	Synthetic peptide from C-Terminus of human PTGES3 (Q15185, NP_006592). Percent identity by BLAST analysis: Human, Chimpanzee, Gorilla, Orangutan, Gibbon, Monkey, Galago, Marmoset, Mouse, Rat, Elephant, Dog, Bovine, Bat, Rabbit, Horse, Pig, Guinea pig (100%), Chicken, Lizard, Xenopus, Frog (92%), Trout, Salmon (86%), Smelt, Zebrafish (85%), Platypus (84%), Catfish, Pike (80%). Type of Immunogen: Synthetic peptide
Specificity:	Human PTGES3
Predicted Reactivity:	Percent identity by BLAST analysis: Human, Mouse, Rat, Dog, Guinea pig (100%) Xenopus (92%) Zebrafish (85%).

Product Details

Purification: Immunoaffinity purified

Target Details

Target: PTGES3

Alternative Name: PTGES3 ([PTGES3 Products](#))

Background: Name/Gene ID: PTGES3

Synonyms: PTGES3, CPGES, p23, Prostaglandin E synthase 3, Telomerase-binding protein p23, Hsp90 co-chaperone, TEBP

Gene ID: 10728

NCBI Accession: [NP_006592](#)

UniProt: [Q15185](#)

Pathways: [Intracellular Steroid Hormone Receptor Signaling Pathway](#), [Cellular Glucan Metabolic Process](#)

Application Details

Application Notes: Approved: WB (0.2 - 1 µg/mL)

Usage: Western Blot: Suggested dilution at 1 µg/mL in 5 % skim milk / PBS buffer, and HRP conjugated anti-Rabbit IgG should be diluted in 1: 50,000 - 100,000 as secondary antibody.

Comment: Target Species of Antibody: Human

Restrictions: For Research Use only

Handling

Format: Lyophilized

Reconstitution: Distilled water

Concentration: Lot specific

Buffer: Lyophilized from PBS with 2 % sucrose

Handling Advice: Avoid repeat freeze-thaw cycles.

Storage: 4 °C, -20 °C

Storage Comment: Long term: -20°C, the use of 50% glycerol is recommended if storing aliquots in -20°C for long

Handling

term use (up to 1 year)

Short term (less than 1 week): 4°C. Avoid freeze-thaw cycles.

Images

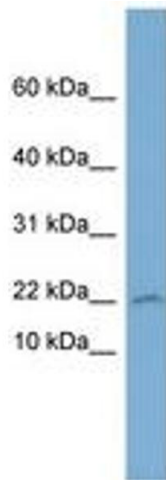


Image 1.