



[Go to Product page](#)

Datasheet for ABIN6744271
anti-CCDC74A antibody (C-Term)

1 Image

Overview

Quantity:	100 µL
Target:	CCDC74A
Binding Specificity:	C-Term
Reactivity:	Human, Mouse
Host:	Rabbit
Clonality:	Polyclonal
Conjugate:	This CCDC74A antibody is un-conjugated
Application:	Western Blotting (WB)

Product Details

Immunogen:	Synthetic peptide from C-Terminus of human CCDC74A (Q96AQ1, NP_620125). Percent identity by BLAST analysis: Human, Chimpanzee, Gorilla, Gibbon (100%), Horse (92%), Mouse (85%). Type of Immunogen: Synthetic peptide
Specificity:	Human CCDC74A
Predicted Reactivity:	Percent identity by BLAST analysis: Human (100%) Mouse (85%).
Purification:	Immunoaffinity purified

Target Details

Target:	CCDC74A
Alternative Name:	CCDC74A (CCDC74A Products)

Target Details

Background:	Name/Gene ID: CCDC74A Synonyms: CCDC74A, CCDC74AV3, CCDC74AV2
Gene ID:	90557
NCBI Accession:	NP_620125
UniProt:	Q96AQ1

Application Details

Application Notes:	Approved: WB (0.2 - 1 µg/mL) Usage: Western Blot: Suggested dilution at 1 µg/mL in 5 % skim milk / PBS buffer, and HRP conjugated anti-Rabbit IgG should be diluted in 1: 50,000 - 100,000 as secondary antibody.
Comment:	Target Species of Antibody: Human
Restrictions:	For Research Use only

Handling

Format:	Lyophilized
Reconstitution:	Distilled water
Concentration:	Lot specific
Buffer:	Lyophilized from PBS with 2 % sucrose
Handling Advice:	Avoid repeat freeze-thaw cycles.
Storage:	4 °C, -20 °C
Storage Comment:	Long term: -20°C, the use of 50% glycerol is recommended if storing aliquots in -20°C for long term use (up to 1 year) Short term (less than 1 week): 4°C. Avoid freeze-thaw cycles.

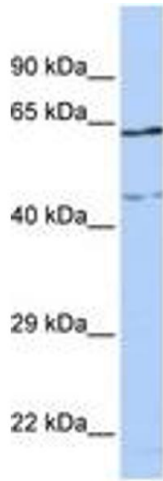


Image 1.