

Datasheet for ABIN6744276
anti-GAN antibody (AA 503-552)[Go to Product page](#)

1 Image

Overview

Quantity:	100 µL
Target:	GAN
Binding Specificity:	AA 503-552
Reactivity:	Human, Rat, Mouse, Cow, Dog, Rabbit, Guinea Pig, Horse, Chicken, Bat, Monkey, Pig
Host:	Rabbit
Clonality:	Polyclonal
Conjugate:	This GAN antibody is un-conjugated
Application:	Western Blotting (WB)

Product Details

Immunogen:	Synthetic peptide located between aa503-552 of human GAN (Q9H2C0, NP_071324). Percent identity by BLAST analysis: Human, Chimpanzee, Gorilla, Gibbon, Monkey, Galago, Marmoset, Mouse, Rat, Elephant, Dog, Bovine, Bat, Rabbit, Horse, Pig, Opossum, Guinea pig, Turkey, Zebra finch, Chicken (100%), Xenopus (92%). Type of Immunogen: Synthetic peptide
Specificity:	Human GAN / Gigaxonin
Predicted Reactivity:	Percent identity by BLAST analysis: Human, Mouse, Rat, Dog, Bovine, Rabbit, Horse, Pig, Chicken (100%) Xenopus (92%).
Purification:	Immunoaffinity purified

Target Details

Target:	GAN
Alternative Name:	GAN (GAN Products)
Background:	Name/Gene ID: GAN Synonyms: GAN, Kelch-like protein 16, KLHL16, GAN1, Gigaxonin
Gene ID:	8139
NCBI Accession:	NP_071324
UniProt:	Q9H2C0

Application Details

Application Notes:	Approved: WB (0.2 - 1 µg/mL) Usage: Western Blot: Suggested dilution at 1 µg/mL in 5 % skim milk / PBS buffer, and HRP conjugated anti-Rabbit IgG should be diluted in 1: 50,000 - 100,000 as secondary antibody.
Comment:	Target Species of Antibody: Human
Restrictions:	For Research Use only

Handling

Format:	Lyophilized
Reconstitution:	Distilled water
Concentration:	Lot specific
Buffer:	Lyophilized from PBS with 2 % sucrose
Handling Advice:	Avoid repeat freeze-thaw cycles.
Storage:	4 °C, -20 °C
Storage Comment:	Long term: -20°C, the use of 50% glycerol is recommended if storing aliquots in -20°C for long term use (up to 1 year) Short term (less than 1 week): 4°C. Avoid freeze-thaw cycles.

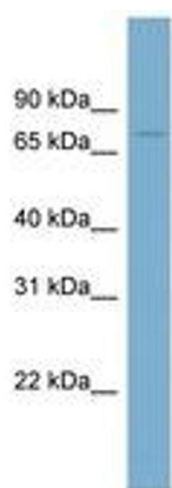


Image 1.