



[Go to Product page](#)

Datasheet for ABIN6744279

anti-MS4A4A antibody (N-Term)

1 Image

Overview

Quantity:	100 µL
Target:	MS4A4A
Binding Specificity:	N-Term
Reactivity:	Human, Dog, Monkey
Host:	Rabbit
Clonality:	Polyclonal
Conjugate:	This MS4A4A antibody is un-conjugated
Application:	Western Blotting (WB)

Product Details

Immunogen:	Synthetic peptide from N-Terminus of human MS4A4A (Q96JQ5, NP_683876). Percent identity by BLAST analysis: Human, Gorilla, Monkey, Marmoset (100%), Dog (84%). Type of Immunogen: Synthetic peptide
Specificity:	Human MS4A4A
Predicted Reactivity:	Percent identity by BLAST analysis: Dog (84%).
Purification:	Immunoaffinity purified

Target Details

Target:	MS4A4A
Alternative Name:	MS4A4A (MS4A4A Products)

Target Details

Background: Name/Gene ID: MS4A4A
Family: MS4A
Synonyms: MS4A4A, 4SPAN1, CD20-L1, CD20L1, HDCME31P, MS4A4, CD20 antigen-like 1

Gene ID: 51338

NCBI Accession: [NP_683876](#)

UniProt: [Q96JQ5](#)

Application Details

Application Notes: Approved: WB (0.2 - 1 µg/mL)
Usage: Western Blot: Suggested dilution at 1 µg/mL in 5 % skim milk / PBS buffer, and HRP conjugated anti-Rabbit IgG should be diluted in 1: 50,000 - 100,000 as secondary antibody.

Comment: Target Species of Antibody: Human

Restrictions: For Research Use only

Handling

Format: Lyophilized

Reconstitution: Distilled water

Concentration: Lot specific

Buffer: Lyophilized from PBS with 2 % sucrose

Handling Advice: Avoid repeat freeze-thaw cycles.

Storage: 4 °C, -20 °C

Storage Comment: Long term: -20°C, the use of 50% glycerol is recommended if storing aliquots in -20°C for long term use (up to 1 year)
Short term (less than 1 week): 4°C. Avoid freeze-thaw cycles.

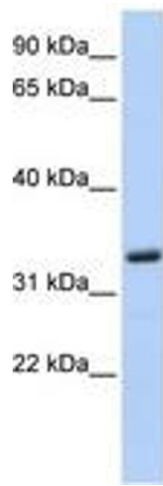


Image 1.