



[Go to Product page](#)

Datasheet for ABIN6744294
anti-Esterase D antibody (N-Term)

1 Image

Overview

Quantity:	100 µL
Target:	Esterase D (ESD)
Binding Specificity:	N-Term
Reactivity:	Human, Pig, Cow, Dog, Horse, Monkey, Bat, Hamster
Host:	Rabbit
Clonality:	Polyclonal
Conjugate:	This Esterase D antibody is un-conjugated
Application:	Western Blotting (WB)

Product Details

Immunogen:	Synthetic peptide from N-Terminus of human ESD (P10768, NP_001975). Percent identity by BLAST analysis: Human, Gibbon, Monkey, Marmoset, Hamster, Elephant, Panda, Dog, Bovine, Bat, Horse, Pig (100%), Mouse, Rat, Rabbit, Guinea pig (92%), Catfish, Salmon, Smelt, Zebrafish (90%), Opossum, Turkey, Chicken, Platypus, Xenopus (84%). Type of Immunogen: Synthetic peptide
Specificity:	Human ESD
Predicted Reactivity:	Percent identity by BLAST analysis: Dog, Pig (100%) Zebrafish (90%) Chicken, Xenopus (84%).
Purification:	Immunoaffinity purified

Target Details

Target:	Esterase D (ESD)
Alternative Name:	Esterase D / ESD (ESD Products)
Background:	Name/Gene ID: ESD Synonyms: ESD, FGH, S-formylglutathione hydrolase, Esterase 10, Esterase D
Gene ID:	2098
NCBI Accession:	NP_001975
UniProt:	P10768

Application Details

Application Notes:	Approved: WB (0.2 - 1 µg/mL) Usage: Western Blot: Suggested dilution at 1 µg/mL in 5 % skim milk / PBS buffer, and HRP conjugated anti-Rabbit IgG should be diluted in 1: 50,000 - 100,000 as secondary antibody.
Comment:	Target Species of Antibody: Human
Restrictions:	For Research Use only

Handling

Format:	Lyophilized
Reconstitution:	Distilled water
Concentration:	Lot specific
Buffer:	Lyophilized from PBS with 2 % sucrose
Handling Advice:	Avoid repeat freeze-thaw cycles.
Storage:	4 °C, -20 °C
Storage Comment:	Long term: -20°C, the use of 50% glycerol is recommended if storing aliquots in -20°C for long term use (up to 1 year) Short term (less than 1 week): 4°C. Avoid freeze-thaw cycles.

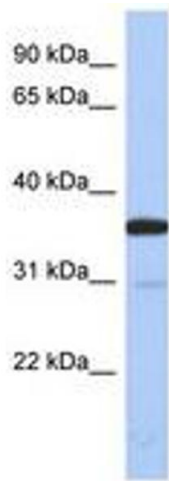


Image 1.