



[Go to Product page](#)

Datasheet for ABIN6744306
anti-ERP44 antibody (C-Term)

1 Image

Overview

Quantity:	100 µL
Target:	ERP44
Binding Specificity:	C-Term
Reactivity:	Human, Mouse, Rat, Guinea Pig, Pig, Zebrafish (Danio rerio)
Host:	Rabbit
Clonality:	Polyclonal
Conjugate:	This ERP44 antibody is un-conjugated
Application:	Western Blotting (WB)

Product Details

Immunogen:	Synthetic peptide from C-Terminus of human ERP44 (Q9BS26, NP_055866). Percent identity by BLAST analysis: Human, Chimpanzee, Gorilla, Gibbon, Galago, Marmoset, Mouse, Rat, Guinea pig (100%), Monkey, Bovine, Rabbit, Horse (92%), Xenopus (90%), Dog, Pig (85%), Bat, Turkey, Zebra finch, Chicken, Lizard (84%). Type of Immunogen: Synthetic peptide
Specificity:	Human ERP44 / TXNDC4
Predicted Reactivity:	Percent identity by BLAST analysis: Human, Marmoset, Mouse, Rat (100%) Bovine (92%) Xenopus (90%) Pig (85%) Chicken (84%) Sea anemone (81%).
Purification:	Immunoaffinity purified

Target Details

Target: ERP44

Alternative Name: ERP44 ([ERP44 Products](#))

Background: Name/Gene ID: ERP44

Synonyms: ERP44, ER protein 44, PDIA10, TXNDC4, KIAA0573

Gene ID: 23071

NCBI Accession: [NP_055866](#)

UniProt: [Q9BS26](#)

Pathways: [Cell RedoxHomeostasis](#), [SARS-CoV-2 Protein Interactome](#)

Application Details

Application Notes: Approved: WB (0.2 - 1 µg/mL)

Usage: Western Blot: Suggested dilution at 1 µg/mL in 5 % skim milk / PBS buffer, and HRP conjugated anti-Rabbit IgG should be diluted in 1: 50,000 - 100,000 as secondary antibody.

Comment: Target Species of Antibody: Human

Restrictions: For Research Use only

Handling

Format: Lyophilized

Reconstitution: Distilled water

Concentration: Lot specific

Buffer: Lyophilized from PBS with 2 % sucrose

Handling Advice: Avoid repeat freeze-thaw cycles.

Storage: 4 °C, -20 °C

Storage Comment: Long term: -20°C, the use of 50% glycerol is recommended if storing aliquots in -20°C for long term use (up to 1 year)

Short term (less than 1 week): 4°C. Avoid freeze-thaw cycles.

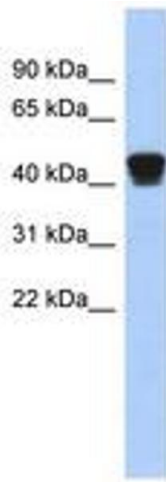


Image 1.