

Datasheet for ABIN6744314
anti-SHB antibody (AA 35-84)[Go to Product page](#)

1 Image

Overview

Quantity:	100 µL
Target:	SHB
Binding Specificity:	AA 35-84
Reactivity:	Human, Mouse, Rat, Cow, Rabbit, Monkey
Host:	Rabbit
Clonality:	Polyclonal
Conjugate:	This SHB antibody is un-conjugated
Application:	Western Blotting (WB)

Product Details

Immunogen:	Synthetic peptide located between aa35-84 of human SHB (Q15464, NP_003019). Percent identity by BLAST analysis: Human, Chimpanzee, Monkey, Marmoset, Mouse, Rat, Elephant, Bovine, Rabbit (100%), Dog (92%). Type of Immunogen: Synthetic peptide
Specificity:	Human SHB
Predicted Reactivity:	Percent identity by BLAST analysis: Human, Mouse, Bovine, Rabbit (100%) Dog (92%).
Purification:	Immunoaffinity purified

Target Details

Target:	SHB
---------	-----

Target Details

Alternative Name:	SHB (SHB Products)
Background:	Name/Gene ID: SHB Synonyms: SHB, BA3J10.2, RP11-3J10.8
Gene ID:	6461
NCBI Accession:	NP_003019
UniProt:	Q15464

Application Details

Application Notes:	Approved: WB (0.2 - 1 µg/mL) Usage: Western Blot: Suggested dilution at 1 µg/mL in 5 % skim milk / PBS buffer, and HRP conjugated anti-Rabbit IgG should be diluted in 1: 50,000 - 100,000 as secondary antibody.
Comment:	Target Species of Antibody: Human
Restrictions:	For Research Use only

Handling

Format:	Lyophilized
Reconstitution:	Distilled water
Concentration:	Lot specific
Buffer:	Lyophilized from PBS with 2 % sucrose
Handling Advice:	Avoid repeat freeze-thaw cycles.
Storage:	4 °C,-20 °C
Storage Comment:	Long term: -20°C, the use of 50% glycerol is recommended if storing aliquots in -20°C for long term use (up to 1 year) Short term (less than 1 week): 4°C. Avoid freeze-thaw cycles.

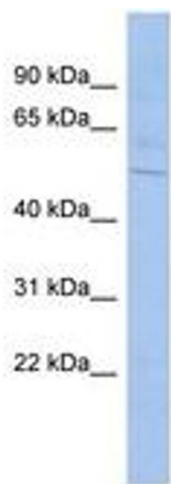


Image 1.