

Datasheet for ABIN6744321 anti-PDCD7 antibody (C-Term)



[Go to Product page](#)

1 Image

Overview

Quantity:	100 µL
Target:	PDCD7
Binding Specificity:	C-Term
Reactivity:	Human, Mouse, Rat, Pig, Horse, Cow, Dog, Rabbit, Monkey
Host:	Rabbit
Clonality:	Polyclonal
Conjugate:	This PDCD7 antibody is un-conjugated
Application:	Western Blotting (WB)

Product Details

Immunogen:	Synthetic peptide from C-Terminus of human PDCD7 (Q8N8D1, NP_005698). Percent identity by BLAST analysis: Human, Chimpanzee, Gorilla, Gibbon, Monkey, Galago, Mouse, Rat, Elephant, Panda, Bovine, Rabbit, Horse, Pig (100%), Bat (92%), Guinea pig (91%), Opossum (90%), Dog (84%), Turkey, Zebra finch, Chicken (83%). Type of Immunogen: Synthetic peptide
Specificity:	Human PDCD7
Predicted Reactivity:	Percent identity by BLAST analysis: Human, Mouse, Rat, Bovine, Rabbit, Horse, Pig (100%) Guinea pig (91%) Dog (84%) Chicken (83%).
Purification:	Immunoaffinity purified

Target Details

Target:	PDCD7
Alternative Name:	PDCD7 (PDCD7 Products)
Background:	Name/Gene ID: PDCD7 Family: Apoptosis Synonyms: PDCD7, Apoptosis-related protein ES18, HES18, Programmed cell death 7, U11/U12 snRNP 59K, ES18
Gene ID:	10081
NCBI Accession:	NP_005698
UniProt:	Q8N8D1

Application Details

Application Notes:	Approved: WB (0.2 - 1 µg/mL) Usage: Western Blot: Suggested dilution at 1 µg/mL in 5 % skim milk / PBS buffer, and HRP conjugated anti-Rabbit IgG should be diluted in 1: 50,000 - 100,000 as secondary antibody.
Comment:	Target Species of Antibody: Human
Restrictions:	For Research Use only

Handling

Format:	Lyophilized
Reconstitution:	Distilled water
Concentration:	Lot specific
Buffer:	Lyophilized from PBS with 2 % sucrose
Handling Advice:	Avoid repeat freeze-thaw cycles.
Storage:	4 °C,-20 °C
Storage Comment:	Long term: -20°C, the use of 50% glycerol is recommended if storing aliquots in -20°C for long term use (up to 1 year) Short term (less than 1 week): 4°C. Avoid freeze-thaw cycles.

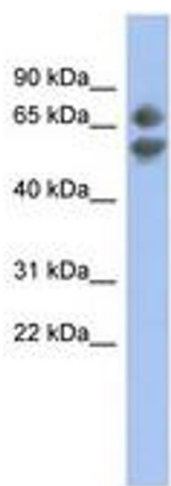


Image 1.