



[Go to Product page](#)

Datasheet for ABIN6744343
anti-BIRC7 antibody (C-Term)

1 Image

Overview

Quantity:	100 µL
Target:	BIRC7
Binding Specificity:	C-Term
Reactivity:	Human, Monkey, Cow, Dog
Host:	Rabbit
Clonality:	Polyclonal
Conjugate:	This BIRC7 antibody is un-conjugated
Application:	Western Blotting (WB)

Product Details

Immunogen:	Synthetic peptide from C-Terminus of human BIRC7 (Q96CA5, NP_647478). Percent identity by BLAST analysis: Human, Gorilla, Gibbon, Monkey (100%), Rabbit (92%), Galago, Marmoset, Panda, Bovine, Guinea pig (85%), Dog (84%). Type of Immunogen: Synthetic peptide
Specificity:	Human BIRC7 / Livin
Predicted Reactivity:	Percent identity by BLAST analysis: Human (100%) Rabbit (92%) Bovine (85%) Dog (84%).
Purification:	Immunoaffinity purified

Target Details

Target:	BIRC7
---------	-------

Target Details

Alternative Name:	BIRC7 / Livin (BIRC7 Products)
Background:	Name/Gene ID: BIRC7 Family: Apoptosis Synonyms: BIRC7, KIAP, Livin inhibitor of apoptosis, MLIAP, ML-IAP, RNF50, RING finger protein 50, LIVIN
Gene ID:	79444
NCBI Accession:	NP_647478
UniProt:	Q96CA5

Application Details

Application Notes:	Approved: WB (0.2 - 1 µg/mL) Usage: Western Blot: Suggested dilution at 1 µg/mL in 5 % skim milk / PBS buffer, and HRP conjugated anti-Rabbit IgG should be diluted in 1: 50,000 - 100,000 as secondary antibody.
Comment:	Target Species of Antibody: Human
Restrictions:	For Research Use only

Handling

Format:	Lyophilized
Reconstitution:	Distilled water
Concentration:	Lot specific
Buffer:	Lyophilized
Handling Advice:	Avoid repeat freeze-thaw cycles.
Storage:	4 °C, -20 °C
Storage Comment:	Long term: -20°C, the use of 50% glycerol is recommended if storing aliquots in -20°C for long term use (up to 1 year) Short term (less than 1 week): 4°C. Avoid freeze-thaw cycles.

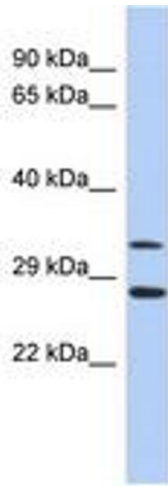


Image 1.