



[Go to Product page](#)

Datasheet for ABIN6744355  
**anti-Cyclin E2 antibody (AA 35-84)**

1 Image

Overview

Quantity:	100 µL
Target:	Cyclin E2 (CCNE2)
Binding Specificity:	AA 35-84
Reactivity:	Human, Cow, Guinea Pig, Horse, Monkey
Host:	Rabbit
Clonality:	Polyclonal
Conjugate:	This Cyclin E2 antibody is un-conjugated
Application:	Western Blotting (WB)

Product Details

Immunogen:	Synthetic peptide located between aa35-84 of human CCNE2 (O96020, NP_477097). Percent identity by BLAST analysis: Human, Chimpanzee, Gorilla, Gibbon, Monkey, Galago, Elephant, Bovine, Horse (100%), Pig (92%), Mouse, Rat (91%), Guinea pig (84%).  Type of Immunogen: Synthetic peptide
Specificity:	Human CCNE2 / Cyclin E2
Predicted Reactivity:	Percent identity by BLAST analysis: Human, Bovine, Horse (100%) Pig (92%) Mouse, Rat (91%) Guinea pig (84%).
Purification:	Immunoaffinity purified

## Target Details

---

Target:	Cyclin E2 (CCNE2)
Alternative Name:	CCNE2 / Cyclin E2 ( <a href="#">CCNE2 Products</a> )
Background:	Name/Gene ID: CCNE2  Synonyms: CCNE2, Cyclin E2, CYCE2, G1/S-specific cyclin-E2
Gene ID:	9134
NCBI Accession:	<a href="#">NP_477097</a>
UniProt:	<a href="#">O96020</a>
Pathways:	<a href="#">Cell Division Cycle, Mitotic G1-G1/S Phases</a>

## Application Details

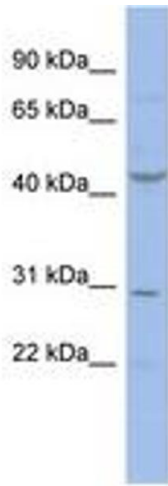
---

Application Notes:	Approved: WB (0.2 - 1 µg/mL)  Usage: Western Blot: Suggested dilution at 1 µg/mL in 5 % skim milk / PBS buffer, and HRP conjugated anti-Rabbit IgG should be diluted in 1: 50,000 - 100,000 as secondary antibody.
Comment:	Target Species of Antibody: Human
Restrictions:	For Research Use only

## Handling

---

Format:	Lyophilized
Reconstitution:	Distilled water
Concentration:	Lot specific
Buffer:	Lyophilized
Handling Advice:	Avoid repeat freeze-thaw cycles.
Storage:	4 °C,-20 °C
Storage Comment:	Long term: -20°C, the use of 50% glycerol is recommended if storing aliquots in -20°C for long term use (up to 1 year)  Short term (less than 1 week): 4°C. Avoid freeze-thaw cycles.



**Image 1.**