



Datasheet for ABIN6744379 **anti-MAF antibody (AA 324-373)**



[Go to Product page](#)

1 Image

Overview

Quantity:	100 µL
Target:	MAF
Binding Specificity:	AA 324-373
Reactivity:	Human, Mouse, Rat, Cow, Zebrafish (Danio rerio), Chicken, Horse, Dog, Guinea Pig, Pig, Monkey
Host:	Rabbit
Clonality:	Polyclonal
Conjugate:	This MAF antibody is un-conjugated
Application:	Western Blotting (WB)

Product Details

Immunogen:	Synthetic peptide located between aa324-373 of human MAF (O75444-1, NP_005351). Percent identity by BLAST analysis: Human, Chimpanzee, Gorilla, Orangutan, Gibbon, Galago, Marmoset, Mouse, Rat, Elephant, Panda, Dog, Bovine, Horse, Opossum, Guinea pig, Zebra finch, Chicken, Zebrafish (100%), Xenopus (92%), Platypus (85%). Type of Immunogen: Synthetic peptide
Specificity:	Human MAF
Predicted Reactivity:	Percent identity by BLAST analysis: Human, Mouse, Rat, Dog, Bovine, Horse, Guinea pig, Chicken, Zebrafish (100%).
Purification:	Immunoaffinity purified

Target Details

Target:	MAF
Alternative Name:	c-Maf (MAF Products)
Background:	Name/Gene ID: MAF Synonyms: MAF, C-MAF, CCA4, C-maf proto-oncogene, Proto-oncogene c-Maf, T lymphocyte c-maf long form, Transcription factor Maf
Gene ID:	4094
NCBI Accession:	NP_005351
UniProt:	O75444

Application Details

Application Notes:	Approved: WB (0.2 - 1 µg/mL) Usage: Western Blot: Suggested dilution at 1 µg/mL in 5 % skim milk / PBS buffer, and HRP conjugated anti-Rabbit IgG should be diluted in 1: 50,000 - 100,000 as secondary antibody.
Comment:	Target Species of Antibody: Human
Restrictions:	For Research Use only

Handling

Format:	Lyophilized
Reconstitution:	Distilled water
Concentration:	Lot specific
Buffer:	Lyophilized
Handling Advice:	Avoid repeat freeze-thaw cycles.
Storage:	4 °C, -20 °C
Storage Comment:	Long term: -20°C, the use of 50% glycerol is recommended if storing aliquots in -20°C for long term use (up to 1 year) Short term (less than 1 week): 4°C. Avoid freeze-thaw cycles.

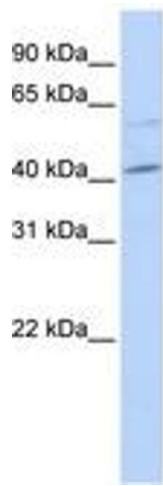


Image 1.