



[Go to Product page](#)

Datasheet for ABIN6744385

anti-ERCC2 antibody (N-Term)

1 Image

Overview

Quantity:	100 µL
Target:	ERCC2
Binding Specificity:	N-Term
Reactivity:	Human, Mouse, Rat, Guinea Pig, Cow, Zebrafish (Danio rerio), Hamster, Monkey, Pig, Bat, Xenopus laevis, Drosophila melanogaster
Host:	Rabbit
Clonality:	Polyclonal
Conjugate:	This ERCC2 antibody is un-conjugated
Application:	Western Blotting (WB)

Product Details

Immunogen:	Synthetic peptide from N-Terminus of human ERCC2 (P18074, NP_000391). Percent identity by BLAST analysis: Human, Chimpanzee, Gorilla, Monkey, Galago, Marmoset, Mouse, Rat, Hamster, Elephant, Panda, Bovine, Bat, Pig, Opossum, Guinea pig, Xenopus, Salmon, Zebrafish, Drosophila (100%), Stickleback (92%), Beetle, Arabidopsis (90%). Type of Immunogen: Synthetic peptide
Specificity:	Human ERCC2 / XPD
Predicted Reactivity:	Percent identity by BLAST analysis: Human, Mouse, Rat, Bovine, Pig, Guinea pig, Zebrafish (100%).
Purification:	Immunoaffinity purified

Target Details

Target:	ERCC2
Alternative Name:	ERCC2 / XPD (ERCC2 Products)
Background:	Name/Gene ID: ERCC2 Synonyms: ERCC2, COFS2, EM9, XPD, TFIIH p80, BTF2 p80, TTD, XPDC, CXPD, TFIIH 80 kDa subunit
Gene ID:	2068
NCBI Accession:	NP_000391
UniProt:	P18074
Pathways:	DNA Damage Repair

Application Details

Application Notes:	Approved: WB (0.2 - 1 µg/mL) Usage: Western Blot: Suggested dilution at 1 µg/mL in 5 % skim milk / PBS buffer, and HRP conjugated anti-Rabbit IgG should be diluted in 1: 50,000 - 100,000 as secondary antibody.
Comment:	Target Species of Antibody: Human
Restrictions:	For Research Use only

Handling

Format:	Lyophilized
Reconstitution:	Distilled water
Concentration:	Lot specific
Buffer:	Lyophilized
Handling Advice:	Avoid repeat freeze-thaw cycles.
Storage:	4 °C,-20 °C
Storage Comment:	Long term: -20°C, the use of 50% glycerol is recommended if storing aliquots in -20°C for long term use (up to 1 year) Short term (less than 1 week): 4°C. Avoid freeze-thaw cycles.

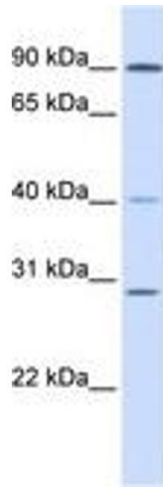


Image 1.