

Datasheet for ABIN6744387

anti-Myb-Related Transcription Factor, Partner of Profilin (MYPOP) (AA 71-120) antibody



[Go to Product page](#)

1 Image

Overview

Quantity:	100 µL
Target:	Myb-Related Transcription Factor, Partner of Profilin (MYPOP)
Binding Specificity:	AA 71-120
Reactivity:	Human, Mouse, Pig, Rat, Cow, Dog, Guinea Pig, Monkey
Host:	Rabbit
Clonality:	Polyclonal
Conjugate:	Un-conjugated
Application:	Western Blotting (WB)

Product Details

Immunogen:	Synthetic peptide located between aa71-120 of human MYPOP (Q86VE0, NP_001012661). Percent identity by BLAST analysis: Human, Chimpanzee, Gorilla, Gibbon, Monkey, Galago, Marmoset, Mouse, Rat, Elephant, Dog, Bovine, Pig, Opossum, Guinea pig (100%), Xenopus (92%). Type of Immunogen: Synthetic peptide
Specificity:	Human MYPOP
Predicted Reactivity:	Percent identity by BLAST analysis: Human, Mouse, Rat, Dog, Bovine, Pig, Guinea pig (100%) Xenopus (92%).
Purification:	Immunoaffinity purified

Target Details

Target:	Myb-Related Transcription Factor, Partner of Profilin (MYPOP)
Alternative Name:	MYPOP (MYPOP Products)
Background:	Name/Gene ID: MYPOP Synonyms: MYPOP, Myb-related protein p42POP, Partner of profilin, p42pop
Gene ID:	339344
NCBI Accession:	NP_001012661
UniProt:	Q86VE0
Pathways:	Chromatin Binding

Application Details

Application Notes:	Approved: WB (0.2 - 1 µg/mL) Usage: Western Blot: Suggested dilution at 1 µg/mL in 5 % skim milk / PBS buffer, and HRP conjugated anti-Rabbit IgG should be diluted in 1: 50,000 - 100,000 as secondary antibody.
Comment:	Target Species of Antibody: Human
Restrictions:	For Research Use only

Handling

Format:	Lyophilized
Reconstitution:	Distilled water
Concentration:	Lot specific
Buffer:	Lyophilized
Handling Advice:	Avoid repeat freeze-thaw cycles.
Storage:	4 °C,-20 °C
Storage Comment:	Long term: -20°C, the use of 50% glycerol is recommended if storing aliquots in -20°C for long term use (up to 1 year) Short term (less than 1 week): 4°C. Avoid freeze-thaw cycles.

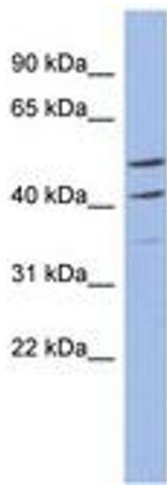


Image 1.