

Datasheet for ABIN6744395
anti-RELB antibody (AA 395-444)



[Go to Product page](#)

1 Image

Overview

Quantity:	100 µL
Target:	RELB
Binding Specificity:	AA 395-444
Reactivity:	Human, Mouse, Dog, Cow, Horse
Host:	Rabbit
Clonality:	Polyclonal
Conjugate:	This RELB antibody is un-conjugated
Application:	Western Blotting (WB)

Product Details

Immunogen:	Synthetic peptide located between aa395-444 of human RELB (Q01201, NP_006500). Percent identity by BLAST analysis: Human, Chimpanzee, Gorilla, Gibbon, Monkey, Opossum (100%), Marmoset, Elephant, Panda, Rabbit (92%), Galago, Mouse, Dog, Bat, Horse (85%). Type of Immunogen: Synthetic peptide
Specificity:	Human RELB
Predicted Reactivity:	Percent identity by BLAST analysis: Human (100%) Rabbit (92%) Mouse, Dog, Horse (85%).
Purification:	Immunoaffinity purified

Target Details

Target:	RELB
---------	------

Target Details

Alternative Name:	RELB (RELB Products)
Background:	Name/Gene ID: RELB Synonyms: RELB, REL-B, Transcription factor RelB, I-Rel, IREL
Gene ID:	5971
NCBI Accession:	NP_006500
UniProt:	Q01201
Pathways:	NF-kappaB Signaling , RTK Signaling

Application Details

Application Notes:	Approved: WB (0.2 - 1 µg/mL) Usage: Western Blot: Suggested dilution at 1 µg/mL in 5 % skim milk / PBS buffer, and HRP conjugated anti-Rabbit IgG should be diluted in 1: 50,000 - 100,000 as secondary antibody. Not recommended for: IHC-P
Comment:	Target Species of Antibody: Human
Restrictions:	For Research Use only

Handling

Format:	Lyophilized
Reconstitution:	Distilled water
Concentration:	Lot specific
Buffer:	Lyophilized
Handling Advice:	Avoid repeat freeze-thaw cycles.
Storage:	4 °C,-20 °C
Storage Comment:	Long term: -20°C, the use of 50% glycerol is recommended if storing aliquots in -20°C for long term use (up to 1 year) Short term (less than 1 week): 4°C. Avoid freeze-thaw cycles.

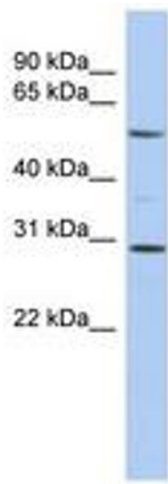


Image 1.