

Datasheet for ABIN6744419
anti-KDM4C antibody (C-Term)

3 Images

[Go to Product page](#)

Overview

Quantity:	100 µL
Target:	KDM4C
Binding Specificity:	C-Term
Reactivity:	Human, Mouse, Rat, Monkey, Rabbit, Cow, Dog, Horse, Bat
Host:	Rabbit
Clonality:	Polyclonal
Conjugate:	This KDM4C antibody is un-conjugated
Application:	Western Blotting (WB), Immunohistochemistry (IHC), Immunohistochemistry (Paraffin-embedded Sections) (IHC (p))

Product Details

Brand:	IHC-plus™
Immunogen:	Synthetic peptide from C-Terminus of human KDM4C (F5H347, NP_001140167). Percent identity by BLAST analysis: Human, Chimpanzee, Gorilla, Gibbon, Monkey, Galago, Marmoset, Mouse, Rat, Elephant, Dog, Bovine, Bat, Rabbit, Horse (100%), Guinea pig (92%). Type of Immunogen: Synthetic peptide
Isotype:	IgG
Specificity:	Human KDM4C / JMJD2C
Predicted Reactivity:	Percent identity by BLAST analysis: Human, Mouse (100%).
Purification:	Immunoaffinity purified

Target Details

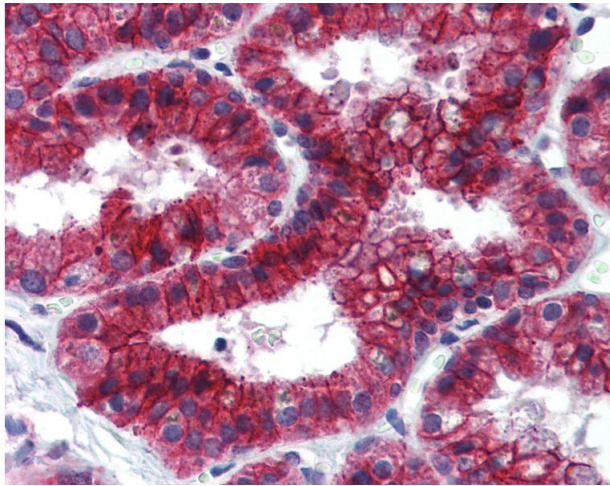
Target:	KDM4C
Alternative Name:	KDM4C / JMJD2C (KDM4C Products)
Background:	Name/Gene ID: KDM4C Synonyms: KDM4C, BA146B14.1, GASC-1 protein, GASC1, Jumonji domain containing 2C, JMJD2C, JHDM3C, KIAA0780, Lysine-specific demethylase 4C
Gene ID:	23081
NCBI Accession:	NP_001140167
UniProt:	Q9H3R0
Pathways:	Nuclear Hormone Receptor Binding , Warburg Effect

Application Details

Application Notes:	Approved: IHC, IHC-P (5 µg/mL), WB (1 µg/mL) Usage: Western Blot: Suggested dilution at 1 µg/mL in 5 % skim milk / PBS buffer, and HRP conjugated anti-Rabbit IgG should be diluted in 1: 50,000 - 100,000 as second antibody. ELISA titer in peptide based assay: 1:62500.
Comment:	Target Species of Antibody: Human
Restrictions:	For Research Use only

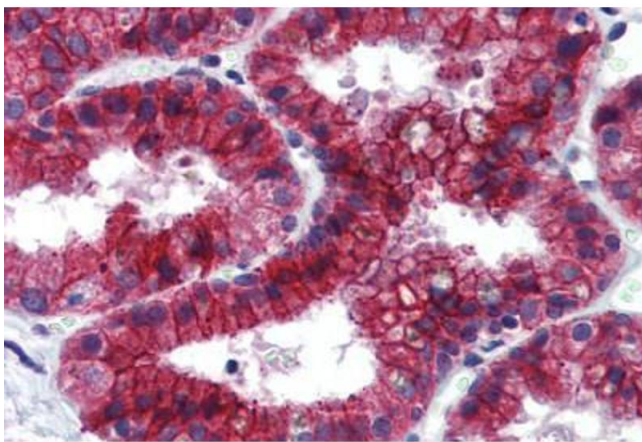
Handling

Format:	Lyophilized
Reconstitution:	Distilled water
Concentration:	Lot specific
Buffer:	Lyophilized from PBS with 2 % sucrose
Handling Advice:	Avoid repeat freeze-thaw cycles.
Storage:	4 °C, -20 °C
Storage Comment:	Long term: -20°C, the use of 50% glycerol is recommended if storing aliquots in -20°C for long term use (up to 1 year) Short term (less than 1 week): 4°C. Avoid freeze-thaw cycles.



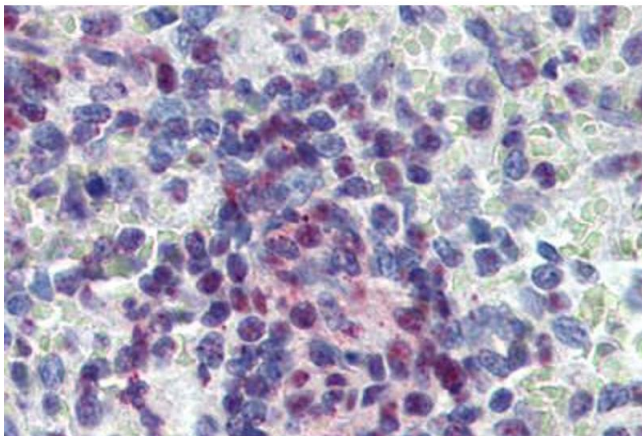
Immunohistochemistry

Image 1. Anti-JMJD2C antibody IHC of human prostate. Immunohistochemistry of formalin-fixed, paraffin-embedded tissue after heat-induced antigen retrieval. Antibody concentration 5 ug/ml. This image was taken for the unconjugated form of this product. Other ...



Immunohistochemistry (Formalin-fixed Paraffin-embedded Sections)

Image 2. Human Prostate: Formalin-Fixed, Paraffin-Embedded (FFPE)



Immunohistochemistry (Formalin-fixed Paraffin-embedded Sections)

Image 3. Human Spleen: Formalin-Fixed, Paraffin-Embedded (FFPE)