

Datasheet for ABIN6744421
anti-Claudin 23 antibody (AA 221-270)[Go to Product page](#)

2 Images

Overview

Quantity:	100 µL
Target:	Claudin 23 (CLDN23)
Binding Specificity:	AA 221-270
Reactivity:	Human, Mouse, Rat, Monkey
Host:	Rabbit
Clonality:	Polyclonal
Conjugate:	This Claudin 23 antibody is un-conjugated
Application:	Western Blotting (WB), Immunohistochemistry (IHC), Immunohistochemistry (Paraffin-embedded Sections) (IHC (p))

Product Details

Brand:	IHC-plus™
Immunogen:	Synthetic peptide located between aa221-270 of human CLDN23 (Q6ZW63, NP_919260). Percent identity by BLAST analysis: Human, Monkey (100%), Mouse (85%), Rat (84%). Type of Immunogen: Synthetic peptide
Isotype:	IgG
Specificity:	Human CLDN23 / Claudin 23
Predicted Reactivity:	Percent identity by BLAST analysis: Human (100%) Mouse (85%) Rat (84%).
Purification:	Immunoaffinity purified

Target Details

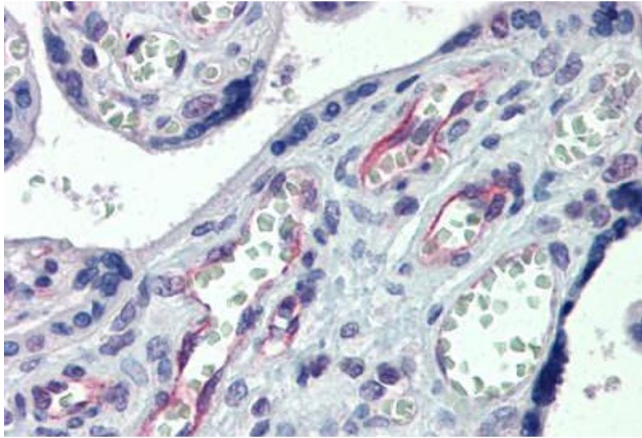
Target:	Claudin 23 (CLDN23)
Alternative Name:	CLDN23 / Claudin 23 (CLDN23 Products)
Background:	Name/Gene ID: CLDN23 Family: Claudin Synonyms: CLDN23, Claudin-23, CLDNL, HCG1646163, Claudin 23
Gene ID:	137075
NCBI Accession:	NP_919260
UniProt:	Q96B33
Pathways:	Cell-Cell Junction Organization , Hepatitis C

Application Details

Application Notes:	Approved: IHC, IHC-P (5 µg/mL), WB (0.2 - 1 µg/mL)
Comment:	Target Species of Antibody: Human
Restrictions:	For Research Use only

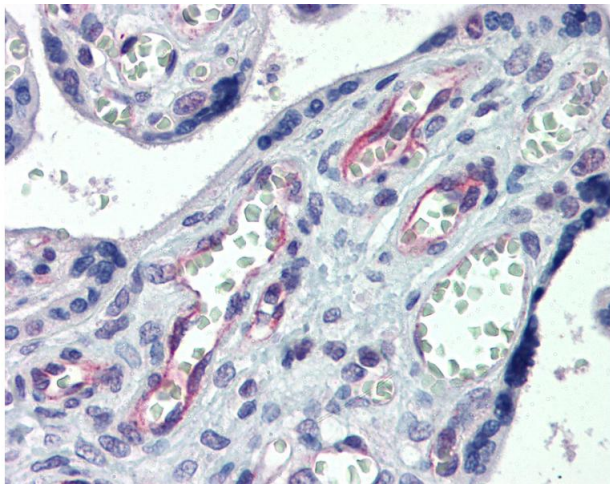
Handling

Format:	Lyophilized
Reconstitution:	After adding water, will consist of PBS buffer with 2 % sucrose
Concentration:	Lot specific
Buffer:	Lyophilized from PBS with 2 % sucrose
Handling Advice:	Avoid repeat freeze-thaw cycles.
Storage:	4 °C, -20 °C
Storage Comment:	Long term: -20°C, the use of 50% glycerol is recommended if storing aliquots in -20°C for long term use (up to 1 year) Short term (less than 1 week): 4°C. Avoid freeze-thaw cycles.



Immunohistochemistry (Formalin-fixed Paraffin-embedded Sections)

Image 1. Human Placenta: Formalin-Fixed, Paraffin-Embedded (FFPE)



Immunohistochemistry

Image 2. Anti-CLDN23 / Claudin 23 antibody IHC of human placenta. Immunohistochemistry of formalin-fixed, paraffin-embedded tissue after heat-induced antigen retrieval. Antibody concentration 5 ug/ml. This image was taken for the unconjugated form of this pr ...