



Datasheet for ABIN6744423
anti-KIF13B antibody (AA 107-156)



[Go to Product page](#)

2 Images

Overview

Quantity:	100 µL
Target:	KIF13B
Binding Specificity:	AA 107-156
Reactivity:	Human, Mouse, Rat, Rabbit, Cow, Dog, Guinea Pig, Bat, Chicken, Monkey, Pig
Host:	Rabbit
Clonality:	Polyclonal
Conjugate:	This KIF13B antibody is un-conjugated
Application:	Western Blotting (WB), Immunohistochemistry (IHC), Immunohistochemistry (Paraffin-embedded Sections) (IHC (p))

Product Details

Brand:	IHC-plus™
Immunogen:	Synthetic peptide located between aa107-156 of human KIF13B (Q9NQT8, NP_056069). Percent identity by BLAST analysis: Human, Chimpanzee, Gorilla, Orangutan, Gibbon, Monkey, Galago, Marmoset, Mouse, Rat, Panda, Dog, Bovine, Bat, Rabbit, Pig, Opossum, Guinea pig, Turkey, Zebra finch, Chicken (100%), Horse (92%), Platypus (91%), Xenopus (84%). Type of Immunogen: Synthetic peptide
Isotype:	IgG
Specificity:	Human KIF13B
Predicted Reactivity:	Percent identity by BLAST analysis: Human, Mouse, Rat, Dog, Bovine, Rabbit, Pig, Guinea pig,

Product Details

Chicken (100%) Horse (92%) Xenopus (84%).

Purification: Immunoaffinity purified

Target Details

Target: KIF13B

Alternative Name: KIF13B / GAKIN ([KIF13B Products](#))

Background: Name/Gene ID: KIF13B

Synonyms: KIF13B, GAKIN, Kinesin-like protein KIF13B, Kinesin 13B, Kinesin family member 13B, Kinesin-like protein GAKIN, KIAA0639

Gene ID: 23303

NCBI Accession: [NP_056069](#)

UniProt: [Q9NQT8](#)

Application Details

Application Notes: Approved: IHC, IHC-P (5 µg/mL), WB (1 µg/mL)

Usage: Western Blot: Suggested dilution at 1 µg/mL in 5 % skim milk / PBS buffer, and HRP conjugated anti-Rabbit IgG should be diluted in 1: 50,000 - 100,000 as second antibody. ELISA titer in peptide based assay: 1:62500.

Comment: Target Species of Antibody: Human

Restrictions: For Research Use only

Handling

Format: Lyophilized

Reconstitution: Distilled water

Concentration: Lot specific

Buffer: Lyophilized from PBS with 2 % sucrose

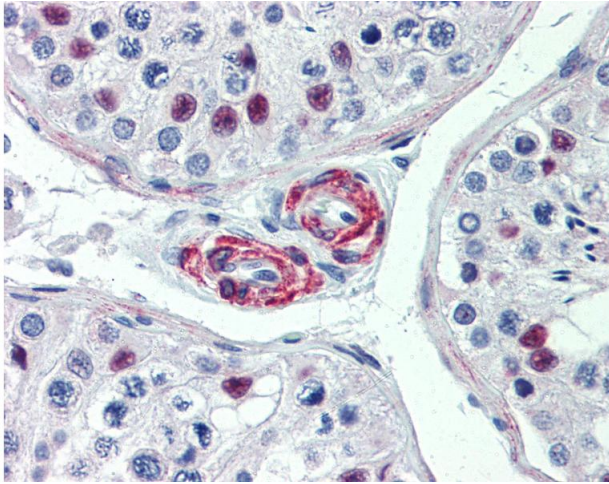
Handling Advice: Avoid repeat freeze-thaw cycles.

Storage: 4 °C, -20 °C

Handling

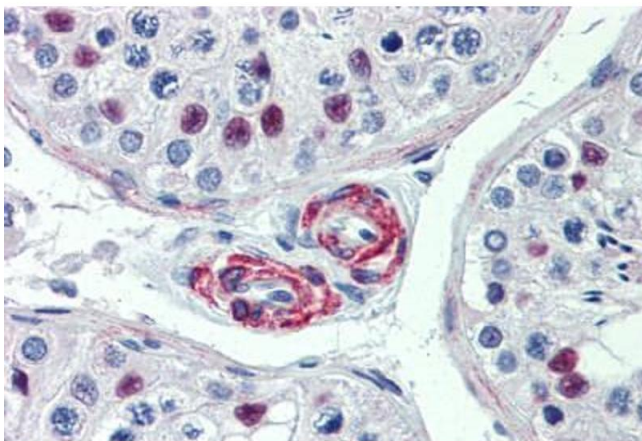
Storage Comment: Long term: -20°C, the use of 50% glycerol is recommended if storing aliquots in -20°C for long term use (up to 1 year)
Short term (less than 1 week): 4°C. Avoid freeze-thaw cycles.

Images



Immunohistochemistry

Image 1. Anti-KIF13B antibody IHC of human testis. Immunohistochemistry of formalin-fixed, paraffin-embedded tissue after heat-induced antigen retrieval. Antibody concentration 5 ug/ml. This image was taken for the unconjugated form of this product. Other fo ...



Immunohistochemistry (Formalin-fixed Paraffin-embedded Sections)

Image 2. Human Testis: Formalin-Fixed, Paraffin-Embedded (FFPE)