

Datasheet for ABIN6744424
anti-KCNK9 antibody (AA 36-85)

2 Images

[Go to Product page](#)

Overview

Quantity:	100 µL
Target:	KCNK9
Binding Specificity:	AA 36-85
Reactivity:	Human, Rat, Mouse, Cow, Rabbit, Horse, Monkey
Host:	Rabbit
Clonality:	Polyclonal
Conjugate:	This KCNK9 antibody is un-conjugated
Application:	Western Blotting (WB), Immunohistochemistry (IHC), Immunohistochemistry (Paraffin-embedded Sections) (IHC (p))

Product Details

Brand:	IHC-plus™
Immunogen:	Synthetic peptide located between aa36-85 of human KCNK9 (Q9NPC2). Percent identity by BLAST analysis: Human, Chimpanzee, Gorilla, Orangutan, Gibbon, Monkey, Marmoset, Elephant, Panda, Bovine, Rabbit, Horse, Opossum (100%), Guinea pig, Zebra finch, Chicken, Xenopus (92%), Galago (85%), Platypus, Lizard (84%), Mouse, Rat (78%). Type of Immunogen: Synthetic peptide
Isotype:	IgG
Specificity:	Human KCNK9
Predicted Reactivity:	Percent identity by BLAST analysis: Human (100%) Guinea pig, Chicken, Xenopus (92%).

Product Details

Purification: Immunoaffinity purified

Target Details

Target: KCNK9

Alternative Name: KCNK9 / TASK3 ([KCNK9 Products](#))

Background: Name/Gene ID: KCNK9
Subfamily: Potassium channel - two pore
Family: Ion Channel

Synonyms: KCNK9, KT3.2, K2p9.1, Potassium channel TASK3, TASK3, Two pore K(+) channel
KT3.2, TASK-3

Gene ID: 51305

UniProt: [Q9NPC2](#)

Application Details

Application Notes: Approved: IHC, IHC-P (5 µg/mL), WB (1 µg/mL)

Usage: Western Blot: Suggested dilution at 1 µg/mL in 5 % skim milk / PBS buffer, and HRP conjugated anti-Rabbit IgG should be diluted in 1: 50,000 - 100,000 as second antibody. ELISA titer in peptide based assay: 1:12500.

Comment: Target Species of Antibody: Human

Restrictions: For Research Use only

Handling

Format: Lyophilized

Reconstitution: Distilled water

Concentration: Lot specific

Buffer: Lyophilized from PBS with 2 % sucrose

Handling Advice: Avoid repeat freeze-thaw cycles.

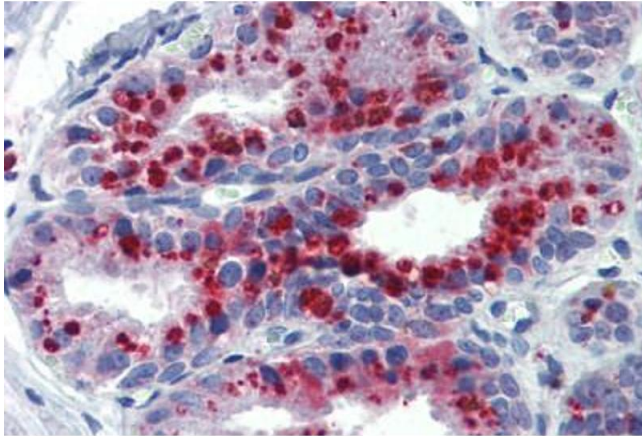
Storage: 4 °C, -20 °C

Handling

Storage Comment: Long term: -20°C, the use of 50% glycerol is recommended if storing aliquots in -20°C for long term use (up to 1 year)

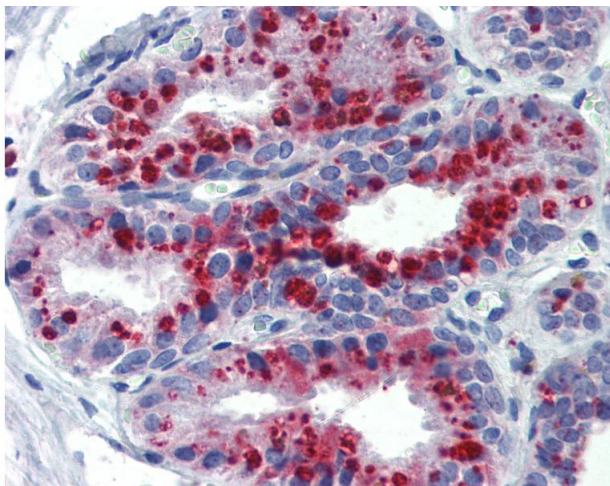
Short term (less than 1 week): 4°C. Avoid freeze-thaw cycles.

Images



Immunohistochemistry (Formalin-fixed Paraffin-embedded Sections)

Image 1. Human Prostate: Formalin-Fixed, Paraffin-Embedded (FFPE)



Immunohistochemistry

Image 2. Anti-KCNK9 antibody IHC of human prostate. Immunohistochemistry of formalin-fixed, paraffin-embedded tissue after heat-induced antigen retrieval. Antibody concentration 5 ug/ml. This image was taken for the unconjugated form of this product. Other f ...