



[Go to Product page](#)

Datasheet for ABIN6744426  
**anti-PRDM9 antibody (AA 431-480)**

3 Images

### Overview

Quantity:	100 µL
Target:	PRDM9
Binding Specificity:	AA 431-480
Reactivity:	Human
Host:	Rabbit
Clonality:	Polyclonal
Conjugate:	This PRDM9 antibody is un-conjugated
Application:	Western Blotting (WB), Immunohistochemistry (IHC), Immunohistochemistry (Paraffin-embedded Sections) (IHC (p))

### Product Details

Brand:	IHC-plus™
Immunogen:	Synthetic peptide located between aa431-480 of human PRDM9 (Q9NQV7, NP_064612). Percent identity by BLAST analysis: Human (100%), Chimpanzee, Gorilla (92%).  Type of Immunogen: Synthetic peptide
Isotype:	IgG
Specificity:	Human PRDM9
Predicted Reactivity:	Percent identity by BLAST analysis: Human (100%).
Purification:	Immunoaffinity purified

## Target Details

---

Target:	PRDM9
Alternative Name:	PRDM9 ( <a href="#">PRDM9 Products</a> )
Background:	Name/Gene ID: PRDM9  Synonyms: PRDM9, MSBP3, PR domain-containing protein 9, MEISETZ, PFM6, PR domain containing 9, ZNF899, PRMD9
Gene ID:	56979
NCBI Accession:	<a href="#">NP_064612</a>
UniProt:	<a href="#">Q9NQV7</a>

## Application Details

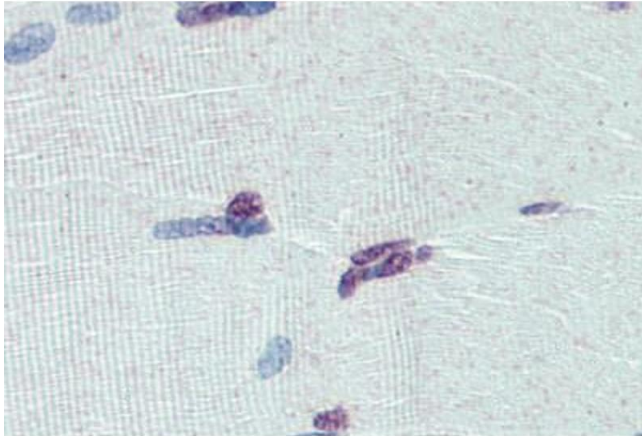
---

Application Notes:	Approved: IHC, IHC-P (5 µg/mL), WB (1 µg/mL)  Usage: Western Blot: Suggested dilution at 1 µg/mL in 5 % skim milk / PBS buffer, and HRP conjugated anti-Rabbit IgG should be diluted in 1: 50,000 - 100,000 as second antibody. ELISA titer in peptide based assay: 1:62500.
Comment:	Target Species of Antibody: Human
Restrictions:	For Research Use only

## Handling

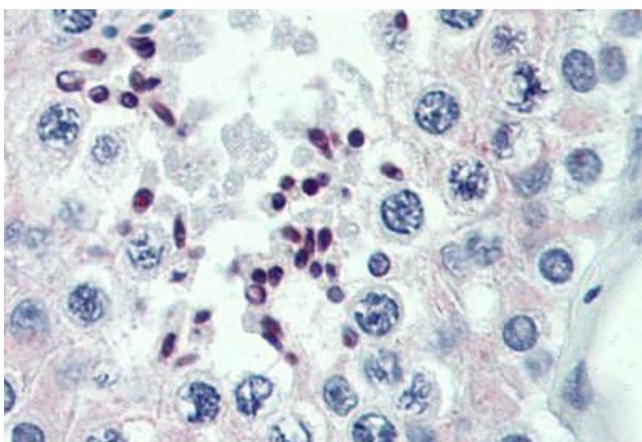
---

Format:	Lyophilized
Reconstitution:	Distilled water
Concentration:	Lot specific
Buffer:	Lyophilized from PBS with 2 % sucrose
Handling Advice:	Avoid repeat freeze-thaw cycles.
Storage:	4 °C,-20 °C
Storage Comment:	Long term: -20°C, the use of 50% glycerol is recommended if storing aliquots in -20°C for long term use (up to 1 year)  Short term (less than 1 week): 4°C. Avoid freeze-thaw cycles.



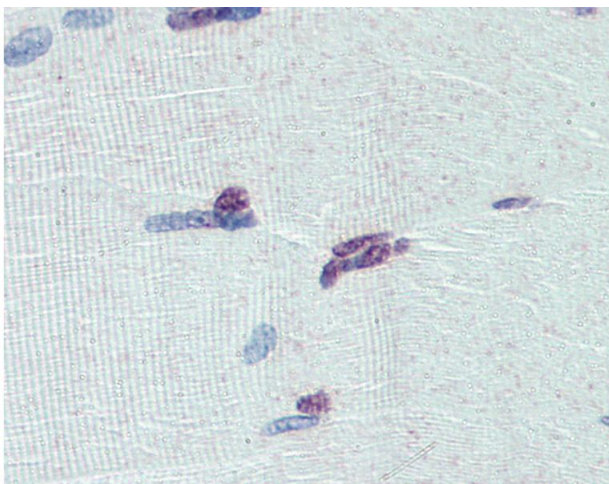
### Immunohistochemistry (Formalin-fixed Paraffin-embedded Sections)

**Image 1.** Human Skeletal Muscle: Formalin-Fixed, Paraffin-Embedded (FFPE)



### Immunohistochemistry (Formalin-fixed Paraffin-embedded Sections)

**Image 2.** Human Testis: Formalin-Fixed, Paraffin-Embedded (FFPE)



### Immunohistochemistry

**Image 3.** Anti-PRDM9 antibody IHC of human skeletal muscle. Immunohistochemistry of formalin-fixed, paraffin-embedded tissue after heat-induced antigen retrieval. Antibody concentration 5 ug/ml. This image was taken for the unconjugated form of this product. ...