

## Datasheet for ABIN6744428 anti-PCBP1 antibody (AA 208-257)



[Go to Product page](#)

### 3 Images

#### Overview

Quantity:	100 µL
Target:	PCBP1
Binding Specificity:	AA 208-257
Reactivity:	Human, Mouse, Rat, Cow, Rabbit, Dog, Horse, Guinea Pig, Bat, Hamster
Host:	Rabbit
Clonality:	Polyclonal
Conjugate:	This PCBP1 antibody is un-conjugated
Application:	Western Blotting (WB), Immunohistochemistry (IHC), Immunohistochemistry (Paraffin-embedded Sections) (IHC (p))

#### Product Details

Brand:	IHC-plus™
Immunogen:	Synthetic peptide located between aa208-257 of human PCBP1 (Q15365, NP_006187). Percent identity by BLAST analysis: Human, Chimpanzee, Gorilla, Gibbon, Galago, Mouse, Rat, Hamster, Panda, Dog, Bovine, Bat, Rabbit, Horse, Guinea pig (100%), Monkey, Marmoset (92%).  Type of Immunogen: Synthetic peptide
Isotype:	IgG
Specificity:	Human PCBP1
Predicted Reactivity:	Percent identity by BLAST analysis: Human, Mouse, Rat, Bovine, Rabbit, Horse (100%).
Purification:	Immunoaffinity purified

## Target Details

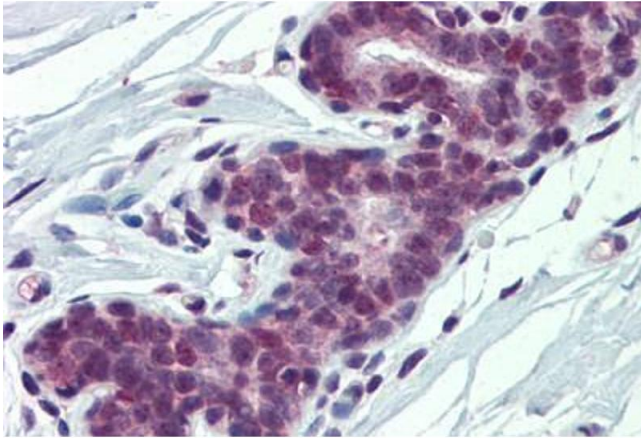
Target:	PCBP1
Alternative Name:	HnRNP-E1 / PCBP1 ( <a href="#">PCBP1 Products</a> )
Background:	Name/Gene ID: PCBP1  Synonyms: PCBP1, Alpha-CP1, HnRNP E1, HnRNP-E1, HnRNP-X, HNRPE1, Poly(rC) binding protein 1, HNRPX, Poly(rC)-binding protein 1
Gene ID:	5093
NCBI Accession:	<a href="#">NP_006187</a>
UniProt:	<a href="#">Q15365</a>

## Application Details

Application Notes:	Approved: IHC, IHC-P (5 µg/mL), WB (1 µg/mL)  Usage: ELISA titer using peptide based assay: 1:62500. Western Blot: Suggested dilution at 1 µg/mL in 5 % skim milk / PBS buffer, and HRP conjugated anti-Rabbit IgG should be diluted in 1:50000 - 100000 as second antibody.
Comment:	Target Species of Antibody: Human
Restrictions:	For Research Use only

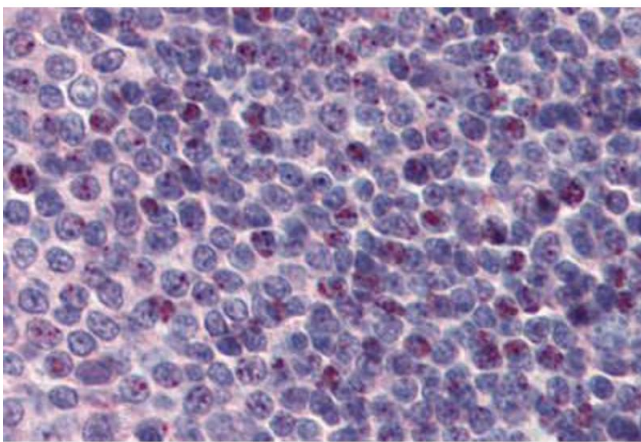
## Handling

Format:	Lyophilized
Reconstitution:	Reconstitute with 50 µL sterile ddH2O.
Concentration:	Lot specific
Buffer:	Lyophilized from PBS with 2 % sucrose
Handling Advice:	Avoid repeat freeze-thaw cycles.
Storage:	4 °C,-20 °C
Storage Comment:	Long term: -20°C, the use of 50% glycerol is recommended if storing aliquots in -20°C for long term use (up to 1 year)  Short term (less than 1 week): 4°C. Avoid freeze-thaw cycles.



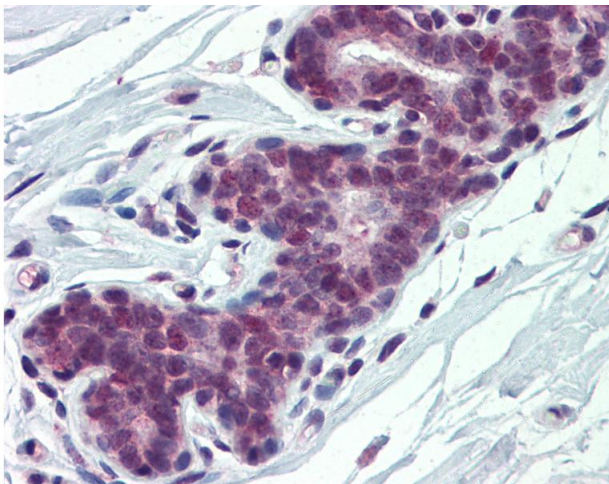
#### Immunohistochemistry (Formalin-fixed Paraffin-embedded Sections)

**Image 1.** Human Breast: Formalin-Fixed, Paraffin-Embedded (FFPE)



#### Immunohistochemistry (Formalin-fixed Paraffin-embedded Sections)

**Image 2.** Human Spleen: Formalin-Fixed, Paraffin-Embedded (FFPE)



#### Immunohistochemistry

**Image 3.** Anti-PCBP1 antibody IHC of human breast. Immunohistochemistry of formalin-fixed, paraffin-embedded tissue after heat-induced antigen retrieval. Antibody concentration 5 ug/ml. This image was taken for the unconjugated form of this product. Other for ...