



[Go to Product page](#)

Datasheet for ABIN6744429
anti-NOP56 antibody (AA 193-242)

2 Images

Overview

Quantity:	100 µL
Target:	NOP56
Binding Specificity:	AA 193-242
Reactivity:	Human
Host:	Rabbit
Clonality:	Polyclonal
Conjugate:	This NOP56 antibody is un-conjugated
Application:	Western Blotting (WB), Immunohistochemistry (IHC), Immunohistochemistry (Paraffin-embedded Sections) (IHC (p))

Product Details

Brand:	IHC-plus™
Immunogen:	Synthetic peptide located between aa193-242 of human NOP56 (O00567, NP_006383). Percent identity by BLAST analysis: Human, Chimpanzee, Gorilla, Orangutan (100%), Gibbon, Monkey, Galago, Marmoset, Mouse, Rat, Dog, Rabbit, Horse, Guinea pig (92%), Bovine (85%). Type of Immunogen: Synthetic peptide
Isotype:	IgG
Specificity:	Human NOP56 / NOL5A
Predicted Reactivity:	Percent identity by BLAST analysis: Human (100%).
Purification:	Immunoaffinity purified

Target Details

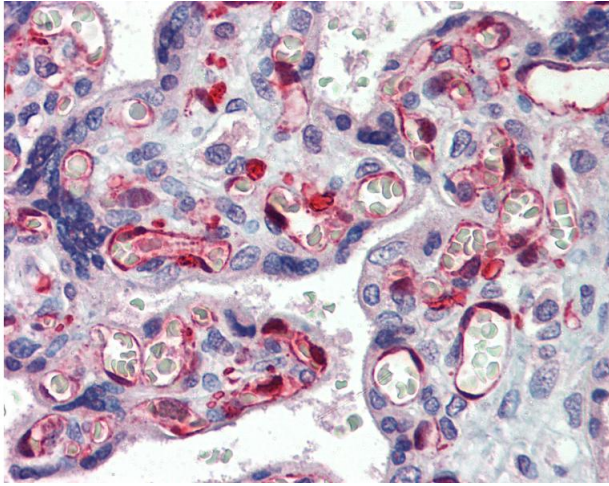
Target:	NOP56
Alternative Name:	NOL5A / NOP56 (NOP56 Products)
Background:	Name/Gene ID: NOP56 Synonyms: NOP56, NOP56 ribonucleoprotein, Nucleolar protein 5A, Nucleolar protein 56, SCA36, NOL5A
Gene ID:	10528
NCBI Accession:	NP_006383
UniProt:	O00567

Application Details

Application Notes:	Approved: IHC, IHC-P (5 µg/mL), WB (1 µg/mL) Usage: ELISA titer using peptide based assay: 1:62500. Western Blot: Suggested dilution at 1 µg/mL in 5 % skim milk / PBS buffer, and HRP conjugated anti-Rabbit IgG should be diluted in 1:50000 - 100000 as second antibody.
Comment:	Target Species of Antibody: Human
Restrictions:	For Research Use only

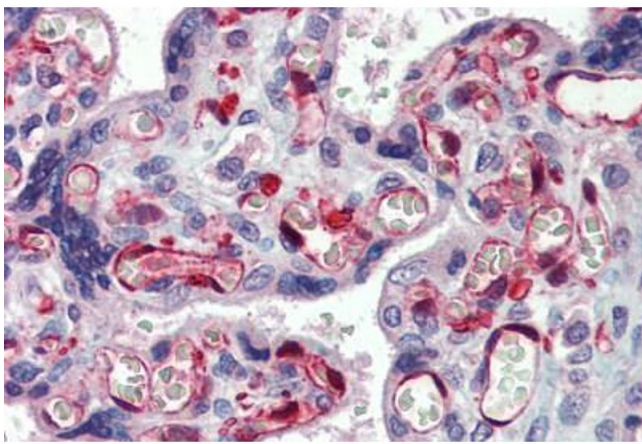
Handling

Format:	Lyophilized
Reconstitution:	Distilled Water.
Concentration:	Lot specific
Buffer:	Lyophilized from PBS with 2 % sucrose
Handling Advice:	Avoid repeat freeze-thaw cycles.
Storage:	4 °C,-20 °C
Storage Comment:	Long term: -20°C, the use of 50% glycerol is recommended if storing aliquots in -20°C for long term use (up to 1 year) Short term (less than 1 week): 4°C. Avoid freeze-thaw cycles.



Immunohistochemistry

Image 1. Anti-NOP56 / NOL5A antibody IHC of human placenta. Immunohistochemistry of formalin-fixed, paraffin-embedded tissue after heat-induced antigen retrieval. Antibody concentration 5 ug/ml. This image was taken for the unconjugated form of this product. ...



Immunohistochemistry (Formalin-fixed Paraffin-embedded Sections)

Image 2. Human Placenta: Formalin-Fixed, Paraffin-Embedded (FFPE)