



Datasheet for ABIN6744432
anti-ABHD5 antibody (C-Term)



[Go to Product page](#)

3 Images

Overview

Quantity:	100 µL
Target:	ABHD5
Binding Specificity:	C-Term
Reactivity:	Human, Mouse, Rat, Dog, Cow, Horse, Rabbit, Guinea Pig, Pig, Monkey, Bat
Host:	Rabbit
Clonality:	Polyclonal
Conjugate:	This ABHD5 antibody is un-conjugated
Application:	Western Blotting (WB), Immunohistochemistry (IHC), Immunohistochemistry (Paraffin-embedded Sections) (IHC (p))

Product Details

Brand:	IHC-plus™
Immunogen:	Synthetic peptide from C-Terminus of human ABHD5 (Q8WTS1, NP_057090). Percent identity by BLAST analysis: Human, Chimpanzee, Gorilla, Orangutan, Gibbon, Monkey, Galago, Marmoset, Mouse, Rat, Dog, Bat, Rabbit, Horse, Pig (100%), Sheep, Elephant, Panda, Lizard (92%), Bovine, Opossum, Platypus (85%), Guinea pig, Turkey, Zebra finch, Chicken, Xenopus (84%). Type of Immunogen: Synthetic peptide
Isotype:	IgG
Specificity:	Human ABHD5 / CGI-58

Product Details

Predicted Reactivity:	Percent identity by BLAST analysis: Human, Mouse, Rat, Dog, Rabbit, Horse, Pig (100%) Sheep (92%) Bovine (85%) Guinea pig, Chicken, Xenopus (84%).
Purification:	Immunoaffinity purified

Target Details

Target:	ABHD5
Alternative Name:	ABHD5 CGI58 (ABHD5 Products)
Background:	Name/Gene ID: ABHD5 Synonyms: ABHD5, CDS, CGI-58, IECN2, NCIE2, CGI58
Gene ID:	51099
NCBI Accession:	NP_057090
UniProt:	Q8WTS1
Pathways:	Lipid Metabolism

Application Details

Application Notes:	Approved: IHC, IHC-P (10 µg/mL), WB (0.2 - 1 µg/mL) Usage: ELISA titer using peptide based assay: 1:312500. Western Blot: Suggested dilution at 1 µg/mL in 5 % skim milk / PBS buffer, and HRP conjugated anti-Rabbit IgG should be diluted in 1:50000 - 100000 as second antibody.
Comment:	Target Species of Antibody: Human
Restrictions:	For Research Use only

Handling

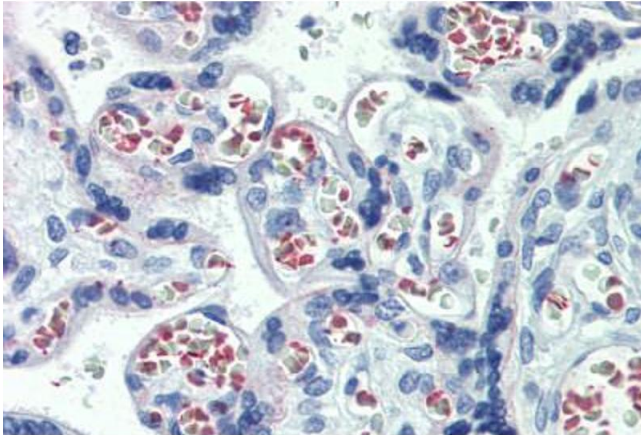
Format:	Lyophilized
Reconstitution:	Distilled Water.
Concentration:	Lot specific
Buffer:	Lyophilized from PBS with 2 % sucrose
Handling Advice:	Avoid repeat freeze-thaw cycles.

Handling

Storage: 4 °C, -20 °C

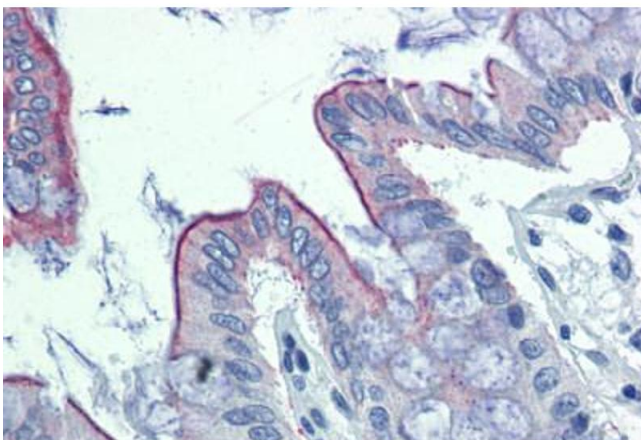
Storage Comment: Long term: -20°C, the use of 50% glycerol is recommended if storing aliquots in -20°C for long term use (up to 1 year)
Short term (less than 1 week): 4°C. Avoid freeze-thaw cycles.

Images



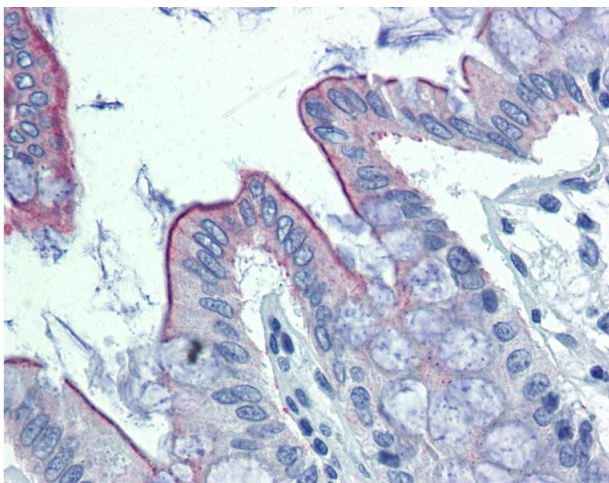
Immunohistochemistry (Formalin-fixed Paraffin-embedded Sections)

Image 1. Human Placenta: Formalin-Fixed, Paraffin-Embedded (FFPE)



Immunohistochemistry (Formalin-fixed Paraffin-embedded Sections)

Image 2. Human Colon: Formalin-Fixed, Paraffin-Embedded (FFPE)



Immunohistochemistry

Image 3. Anti-ABHD5 / CGI-58 antibody IHC of human colon. Immunohistochemistry of formalin-fixed, paraffin-embedded tissue after heat-induced antigen retrieval. Antibody concentration 10 ug/ml. This image was taken for the unconjugated form of this product. ...