

Datasheet for ABIN6744434
anti-IGFBP4 antibody (AA 180-229)[Go to Product page](#)

4 Images

Overview

Quantity:	100 µL
Target:	IGFBP4
Binding Specificity:	AA 180-229
Reactivity:	Human, Mouse, Rat, Cow, Dog, Horse, Rabbit, Sheep, Goat, Bat
Host:	Rabbit
Clonality:	Polyclonal
Conjugate:	This IGFBP4 antibody is un-conjugated
Application:	Western Blotting (WB), Immunohistochemistry (IHC), Immunohistochemistry (Paraffin-embedded Sections) (IHC (p))

Product Details

Brand:	IHC-plus™
Immunogen:	Synthetic peptide located between aa180-229 of human IGFBP4 (P22692, NP_001543). Percent identity by BLAST analysis: Human, Chimpanzee, Gorilla, Gibbon, Monkey, Galago, Mouse, Rat, Sheep, Goat, Elephant, Panda, Dog, Bovine, Bat, Rabbit, Horse (100%), Marmoset, Hamster, Pig, Guinea pig, Turkey, Zebra finch, Chicken, Lizard (92%), Opossum (85%). Type of Immunogen: Synthetic peptide
Isotype:	IgG
Specificity:	Human IGFBP4
Predicted Reactivity:	Percent identity by BLAST analysis: Human, Mouse, Sheep, Dog, Bovine, Horse (100%) Pig,

Product Details

Guinea pig, Chicken (92%).

Purification: Immunoaffinity purified

Target Details

Target: IGFBP4

Alternative Name: IGFBP4 / IGFBP-4 ([IGFBP4 Products](#))

Background: Name/Gene ID: IGFBP4

Synonyms: IGFBP4, BP-4, HT29-IGFBP, IGF-binding protein 4, IBP-4, IGFBP-4, IBP4

Gene ID: 3487

NCBI Accession: [NP_001543](#)

UniProt: [P22692](#)

Pathways: [WNT Signaling](#), [Myometrial Relaxation and Contraction](#), [Regulation of Carbohydrate Metabolic Process](#)

Application Details

Application Notes: Approved: IHC, IHC-P (5 µg/mL), WB (1 µg/mL)

Usage: Immunohistochemistry: This antibody was validated for use in immunohistochemistry on a panel of 21 formalin-fixed, paraffin-embedded (FFPE) human tissues after heat induced antigen retrieval in pH 6.0 citrate buffer. After incubation with the primary antibody, slides were incubated with biotinylated secondary antibody, followed by alkaline phosphatase-streptavidin and chromogen. The stained slides were evaluated by a pathologist to confirm staining specificity. The optimal working concentration for this antibody was determined to be 5 µg/mL. Western Blot: Suggested dilution at 1 µg/mL in 5 % skim milk / PBS buffer, and HRP conjugated anti-Rabbit IgG should be diluted in 1: 50,000 - 100,000 as second antibody. ELISA titer in peptide based assay: 1:62500.

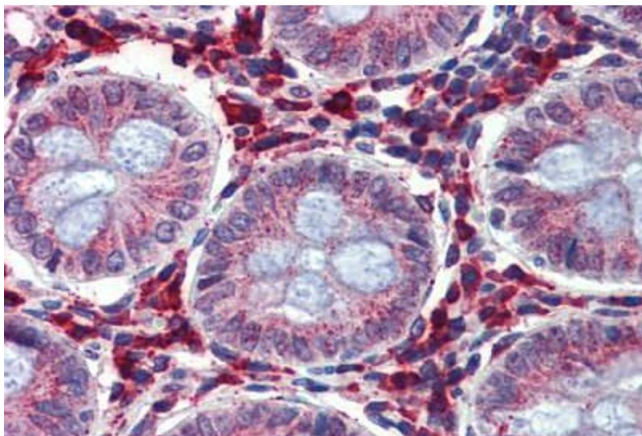
Comment: Target Species of Antibody: Human

Restrictions: For Research Use only

Handling

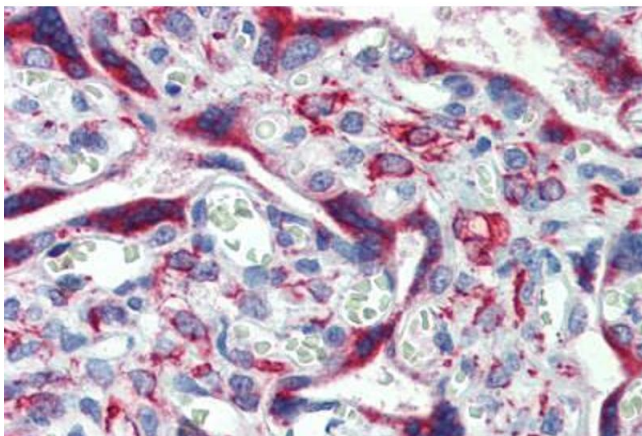
Format:	Lyophilized
Reconstitution:	Distilled water
Concentration:	Lot specific
Buffer:	Lyophilized from PBS with 2 % sucrose
Handling Advice:	Avoid repeat freeze-thaw cycles.
Storage:	4 °C,-20 °C
Storage Comment:	Long term: -20°C, the use of 50% glycerol is recommended if storing aliquots in -20°C for long term use (up to 1 year) Short term (less than 1 week): 4°C. Avoid freeze-thaw cycles.

Images



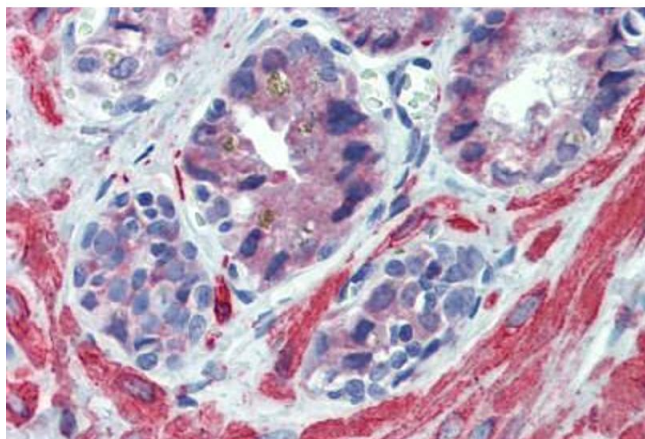
Immunohistochemistry (Formalin-fixed Paraffin-embedded Sections)

Image 1. Colon, Human: Formalin-Fixed, Paraffin-Embedded (FFPE)



Immunohistochemistry (Formalin-fixed Paraffin-embedded Sections)

Image 2. Placenta, Human: Formalin-Fixed, Paraffin-Embedded (FFPE)



Immunohistochemistry (Formalin-fixed Paraffin-embedded Sections)

Image 3. Prostate, Human: Formalin-Fixed, Paraffin-Embedded (FFPE)

Please check the [product details page](#) for more images. Overall 4 images are available for ABIN6744434.