

Datasheet for ABIN6744435
anti-LDHB antibody (C-Term)

3 Images

[Go to Product page](#)

Overview

Quantity:	100 µL
Target:	LDHB
Binding Specificity:	C-Term
Reactivity:	Human, Rabbit, Dog, Monkey, Chicken
Host:	Rabbit
Clonality:	Polyclonal
Conjugate:	This LDHB antibody is un-conjugated
Application:	Western Blotting (WB), Immunohistochemistry (IHC), Immunohistochemistry (Paraffin-embedded Sections) (IHC (p))

Product Details

Brand:	IHC-plus™
Immunogen:	Synthetic peptide from C-Terminus of human LDHB (P07195, NP_002291). Percent identity by BLAST analysis: Human, Chimpanzee, Gorilla, Gibbon, Monkey, Ferret, Dolphin, Elephant, Panda, Dog, Rabbit, Opossum, Turkey, Chicken (100%), Galago, Mouse, Rat, Hamster, Bovine, Horse, Pig, Guinea pig (92%), Catfish (91%), Zebrafish (90%), Zebra finch (85%), Salmon (84%). Type of Immunogen: Synthetic peptide
Isotype:	IgG
Specificity:	Human LDHB
Predicted Reactivity:	Percent identity by BLAST analysis: Human, Dog, Rabbit, Chicken (100%) Mouse, Rat, Bovine,

Product Details

Horse, Pig (92%) Zebrafish (90%).

Purification: Affinity purified

Target Details

Target: LDHB

Alternative Name: LDHB / LDH-B ([LDHB Products](#))

Background: Name/Gene ID: LDHB

Synonyms: LDHB, LDH heart subunit, Lactate dehydrogenase H chain, Lactate dehydrogenase B, LDH-B, TRG-5, LDH-H, LDHBD

Gene ID: 3945

NCBI Accession: [NP_002291](#)

UniProt: [P07195](#)

Pathways: [Warburg Effect](#)

Application Details

Application Notes: Approved: IHC, IHC-P (5 µg/mL), WB (1 µg/mL)

Usage: Immunohistochemistry: This antibody was validated for use in immunohistochemistry on a panel of 21 formalin-fixed, paraffin-embedded (FFPE) human tissues after heat induced antigen retrieval in pH 6.0 citrate buffer. After incubation with the primary antibody, slides were incubated with biotinylated secondary antibody, followed by alkaline phosphatase-streptavidin and chromogen. The stained slides were evaluated by a pathologist to confirm staining specificity. The optimal working concentration for this antibody was determined to be 5 µg/mL. ELISA titer using peptide based assay: 1:62500. Western Blot: Suggested dilution at 1 µg/mL in 5 % skim milk / PBS buffer, and HRP conjugated anti-Rabbit IgG should be diluted in 1:50000 - 100000 as second antibody.

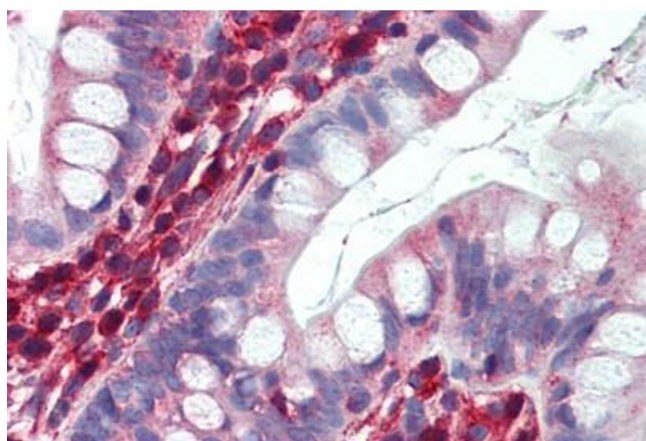
Comment: Target Species of Antibody: Human

Restrictions: For Research Use only

Handling

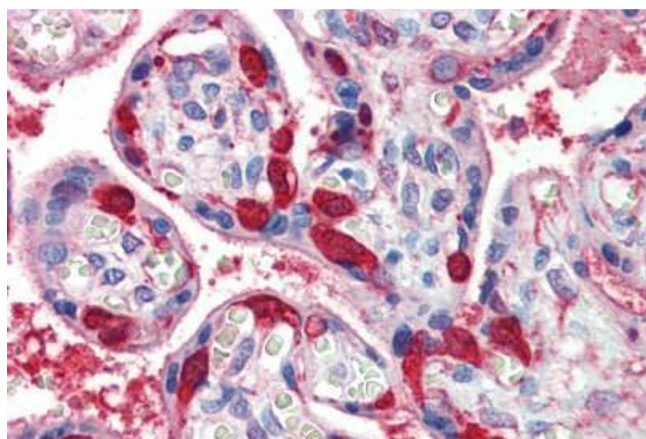
Format:	Lyophilized
Reconstitution:	Distilled water
Concentration:	Lot specific
Buffer:	Lyophilized from PBS with 2 % sucrose
Handling Advice:	Avoid repeat freeze-thaw cycles.
Storage:	4 °C,-20 °C
Storage Comment:	Long term: -20°C, the use of 50% glycerol is recommended if storing aliquots in -20°C for long term use (up to 1 year) Short term (less than 1 week): 4°C. Avoid freeze-thaw cycles.

Images



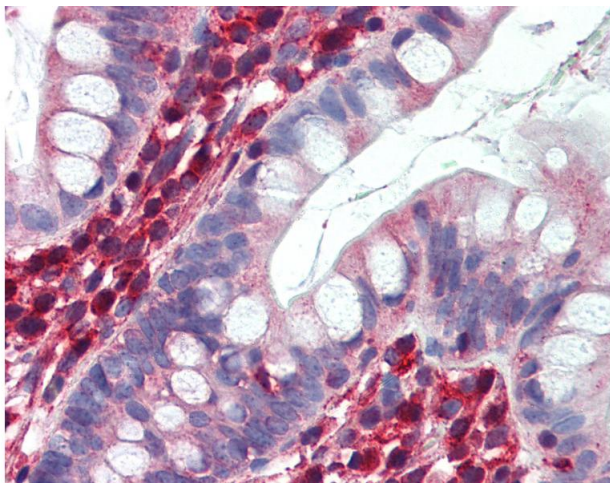
Immunohistochemistry (Formalin-fixed Paraffin-embedded Sections)

Image 1. Small intestine, Human: Formalin-Fixed, Paraffin-Embedded (FFPE)



Immunohistochemistry (Formalin-fixed Paraffin-embedded Sections)

Image 2. Placenta, Human: Formalin-Fixed, Paraffin-Embedded (FFPE)



Immunohistochemistry

Image 3. Anti-LDHB antibody IHC of human small intestine. Immunohistochemistry of formalin-fixed, paraffin-embedded tissue after heat-induced antigen retrieval. Antibody concentration 5 ug/ml. This image was taken for the unconjugated form of this product. O ...