

Datasheet for ABIN6744437
anti-GPSM2 antibody (AA 72-121)

3 Images

[Go to Product page](#)

Overview

Quantity:	100 µL
Target:	GPSM2
Binding Specificity:	AA 72-121
Reactivity:	Human, Mouse, Rat, Dog, Cow, Horse, Rabbit, Zebrafish (Danio rerio), Monkey, Bat
Host:	Rabbit
Clonality:	Polyclonal
Conjugate:	This GPSM2 antibody is un-conjugated
Application:	Western Blotting (WB), Immunohistochemistry (IHC), Immunohistochemistry (Paraffin-embedded Sections) (IHC (p))

Product Details

Brand:	IHC-plus™
Immunogen:	Synthetic peptide located between aa72-121 of human GPSM2 (P81274, NP_037428). Percent identity by BLAST analysis: Human, Chimpanzee, Gorilla, Gibbon, Monkey, Galago, Marmoset, Mouse, Rat, Elephant, Dog, Bovine, Bat, Rabbit, Horse, Opossum, Zebrafish (100%), Zebra finch, Platypus, Xenopus (92%), Hamster, Panda, Guinea pig, Turkey, Chicken (85%). Type of Immunogen: Synthetic peptide
Isotype:	IgG
Specificity:	Human GPSM2
Predicted Reactivity:	Percent identity by BLAST analysis: Human, Mouse, Rat, Dog, Bovine, Rabbit, Horse, Zebrafish

Product Details

(100%) Xenopus (92%) Chicken (85%).

Purification: Immunoaffinity purified

Target Details

Target: GPSM2

Alternative Name: GPSM2 / LGN ([GPSM2 Products](#))

Background: Name/Gene ID: GPSM2

Synonyms: GPSM2, DFNB82, LGN, PINS, CMCS, Mosaic protein LGN

Gene ID: 29899

NCBI Accession: [NP_037428](#)

UniProt: [P81274](#)

Pathways: [Regulation of G-Protein Coupled Receptor Protein Signaling](#)

Application Details

Application Notes: Approved: IHC, IHC-P (5 µg/mL), WB (1 µg/mL)

Usage: Immunohistochemistry: This antibody was validated for use in immunohistochemistry on a panel of 21 formalin-fixed, paraffin-embedded (FFPE) human tissues after heat induced antigen retrieval in pH 6.0 citrate buffer. After incubation with the primary antibody, slides were incubated with biotinylated secondary antibody, followed by alkaline phosphatase-streptavidin and chromogen. The stained slides were evaluated by a pathologist to confirm staining specificity. The optimal working concentration for this antibody was determined to be 5 µg/mL. Western Blot: Suggested dilution at 1 µg/mL in 5 % skim milk / PBS buffer, and HRP conjugated anti-Rabbit IgG should be diluted in 1: 50,000 - 100,000 as second antibody. ELISA titer in peptide based assay: 1:312500.

Not recommended for: IF

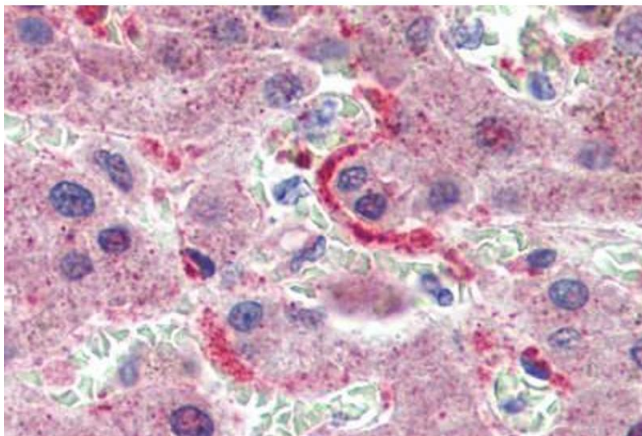
Comment: Target Species of Antibody: Human

Restrictions: For Research Use only

Handling

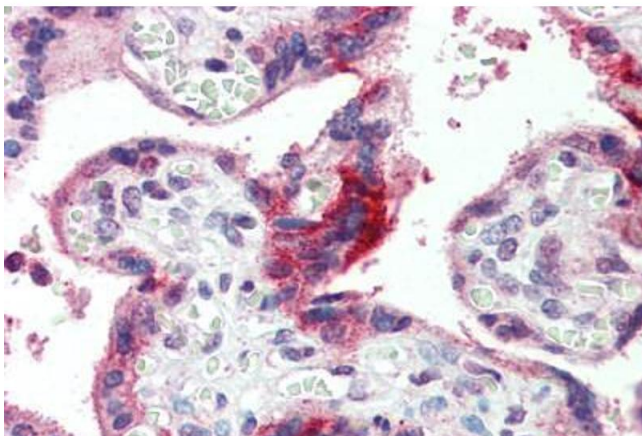
Format:	Lyophilized
Reconstitution:	Distilled water
Concentration:	Lot specific
Buffer:	Lyophilized from PBS with 2 % sucrose
Handling Advice:	Avoid repeat freeze-thaw cycles.
Storage:	4 °C,-20 °C
Storage Comment:	Long term: -20°C, the use of 50% glycerol is recommended if storing aliquots in -20°C for long term use (up to 1 year) Short term (less than 1 week): 4°C. Avoid freeze-thaw cycles.

Images



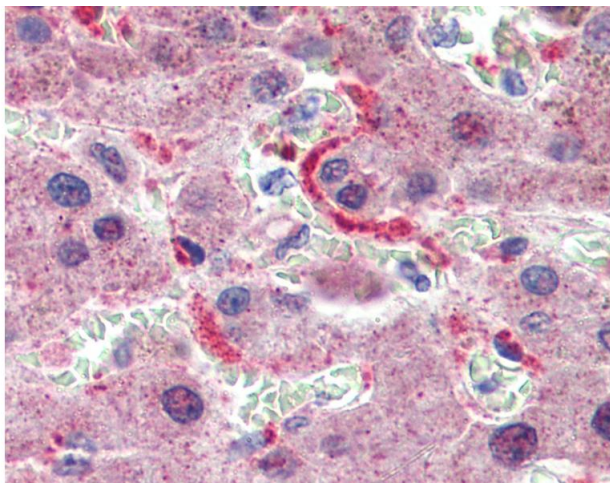
Immunohistochemistry (Formalin-fixed Paraffin-embedded Sections)

Image 1. Liver, Human: Formalin-Fixed, Paraffin-Embedded (FFPE)



Immunohistochemistry (Formalin-fixed Paraffin-embedded Sections)

Image 2. Placenta, Human: Formalin-Fixed, Paraffin-Embedded (FFPE)



Immunohistochemistry

Image 3. Anti-GPSM2 antibody IHC of human liver. Immunohistochemistry of formalin-fixed, paraffin-embedded tissue after heat-induced antigen retrieval. Antibody concentration 5 ug/ml. This image was taken for the unconjugated form of this product. Other form ...