

Datasheet for ABIN6744438

**anti-CYP11A1 antibody (AA 288-337)**

4 Images

1 Publication

[Go to Product page](#)

## Overview

Quantity:	100 µL
Target:	CYP11A1
Binding Specificity:	AA 288-337
Reactivity:	Human
Host:	Rabbit
Clonality:	Polyclonal
Conjugate:	This CYP11A1 antibody is un-conjugated
Application:	Western Blotting (WB), Immunohistochemistry (IHC), Immunohistochemistry (Paraffin-embedded Sections) (IHC (p))

## Product Details

Brand:	IHC-plus™
Immunogen:	Synthetic peptide located between aa288-337 of human CYP11A1 (P05108, NP_000772). Percent identity by BLAST analysis: Human, Chimpanzee, Gorilla (100%), Monkey (92%).  Type of Immunogen: Synthetic peptide
Isotype:	IgG
Specificity:	Human CYP11A1
Predicted Reactivity:	Percent identity by BLAST analysis: Human (100%).
Purification:	Immunoaffinity purified

## Target Details

Target:	CYP11A1
Alternative Name:	P450SCC / CYP11A1 ( <a href="#">CYP11A1 Products</a> )
Background:	Name/Gene ID: CYP11A1 Family: Cytochrome P450  Synonyms: CYP11A1, Cholesterol 20-22 desmolase, Cholesterol desmolase, Cytochrome P450 11A1, Cytochrome P450C11A1, CYP11A, Cytochrome P450(scc), p450SCC, Steroid 20-22-lyase, CYPXIA1
Gene ID:	1583
NCBI Accession:	<a href="#">NP_000772</a>
UniProt:	<a href="#">P05108</a>
Pathways:	<a href="#">Metabolism of Steroid Hormones and Vitamin D</a> , <a href="#">Steroid Hormone Biosynthesis</a> , <a href="#">C21-Steroid Hormone Metabolic Process</a> , <a href="#">Cellular Response to Molecule of Bacterial Origin</a>

## Application Details

Application Notes:	Approved: IHC, IHC-P (5 µg/mL), WB (1 µg/mL)  Usage: Immunohistochemistry: This antibody was validated for use in immunohistochemistry on a panel of 21 formalin-fixed, paraffin-embedded (FFPE) human tissues after heat induced antigen retrieval in pH 6.0 citrate buffer. After incubation with the primary antibody, slides were incubated with biotinylated secondary antibody, followed by alkaline phosphatase-streptavidin and chromogen. The stained slides were evaluated by a pathologist to confirm staining specificity. The optimal working concentration for this antibody was determined to be 5 µg/mL. ELISA titer using peptide based assay: 1:1562500. Western Blot: Suggested dilution at 1 µg/mL in 5 % skim milk / PBS buffer, and HRP conjugated anti-Rabbit IgG should be diluted in 1:50000 - 100000 as second antibody.
Comment:	Target Species of Antibody: Human
Restrictions:	For Research Use only

## Handling

Format:	Lyophilized
Reconstitution:	Distilled Water.

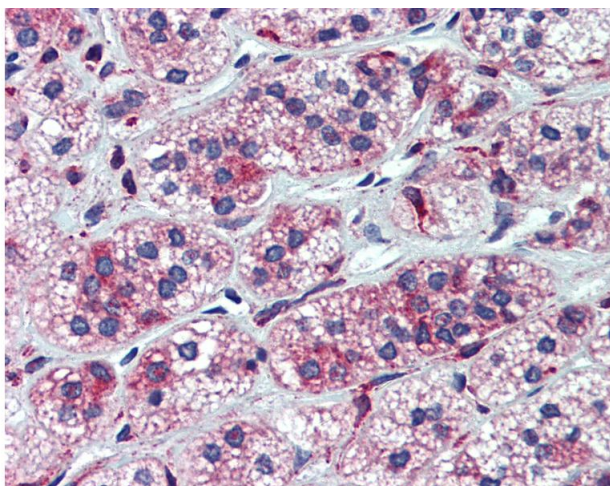
## Handling

Concentration:	Lot specific
Buffer:	Lyophilized from PBS with 2 % sucrose
Handling Advice:	Avoid repeat freeze-thaw cycles.
Storage:	4 °C,-20 °C
Storage Comment:	Long term: -20°C, the use of 50% glycerol is recommended if storing aliquots in -20°C for long term use (up to 1 year) Short term (less than 1 week): 4°C. Avoid freeze-thaw cycles.

## Publications

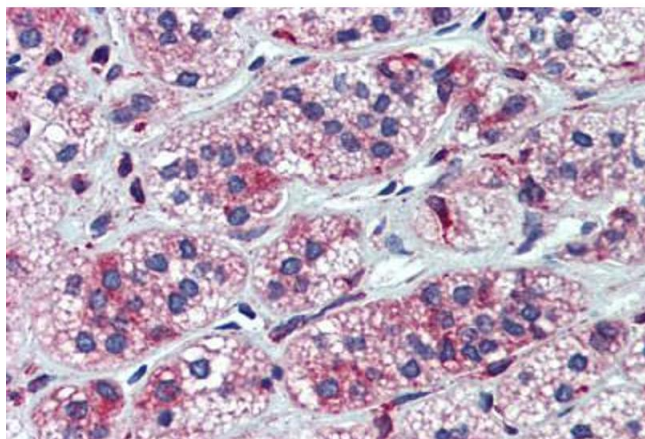
Product cited in:	Jia, Domenico, Takeda, Han, Wang, Armstrong, Reisdorph, OConnor, Lucas, Gelfand: "Steroidogenic enzyme Cyp11a1 regulates Type 2 CD8+ T cell skewing in allergic lung disease." in: <b>Proceedings of the National Academy of Sciences of the United States of America</b> , Vol. 110, Issue 20, pp. 8152-7, (2013) ( <a href="#">PubMed</a> ).
-------------------	--

## Images



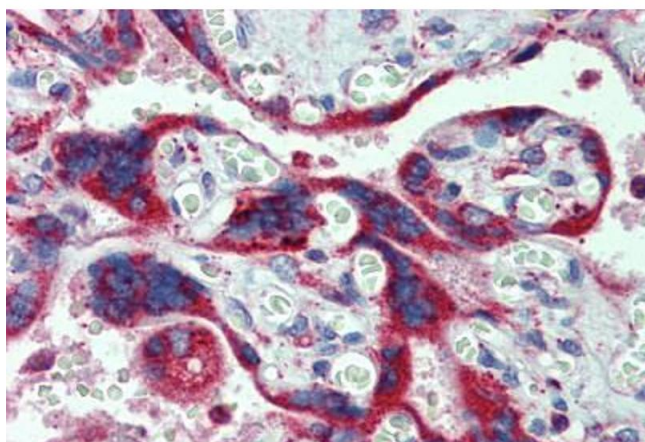
### Immunohistochemistry

**Image 1.** Anti-CYP11A1 antibody IHC of human adrenal. Immunohistochemistry of formalin-fixed, paraffin-embedded tissue after heat-induced antigen retrieval. Antibody concentration 5 ug/ml. This image was taken for the unconjugated form of this product. Other ...



**Immunohistochemistry (Formalin-fixed Paraffin-embedded Sections)**

**Image 2.** Adrenal, Human: Formalin-Fixed, Paraffin-Embedded (FFPE)



**Immunohistochemistry (Formalin-fixed Paraffin-embedded Sections)**

**Image 3.** Placenta, Human: Formalin-Fixed, Paraffin-Embedded (FFPE)

Please check the [product details page](#) for more images. Overall 4 images are available for ABIN6744438.