

Datasheet for ABIN6744441
anti-PHACTR1 antibody (AA 468-517)[Go to Product page](#)

4 Images

Overview

Quantity:	100 µL
Target:	PHACTR1
Binding Specificity:	AA 468-517
Reactivity:	Human, Mouse, Rat, Rabbit, Cow, Guinea Pig, Horse, Xenopus laevis, Chicken, Monkey, Pig
Host:	Rabbit
Clonality:	Polyclonal
Conjugate:	This PHACTR1 antibody is un-conjugated
Application:	Western Blotting (WB), Immunohistochemistry (IHC), Immunohistochemistry (Paraffin-embedded Sections) (IHC (p))

Product Details

Brand:	IHC-plus™
Immunogen:	Synthetic peptide located between aa468-517 of human PHACTR1 (Q9C0D0, NP_112210). Percent identity by BLAST analysis: Human, Gorilla, Monkey, Marmoset, Mouse, Rat, Bovine, Rabbit, Horse, Pig, Opossum, Guinea pig, Zebra finch, Chicken, Xenopus (100%), Turkey (81%). Type of Immunogen: Synthetic peptide
Isotype:	IgG
Specificity:	Human PHACTR1
Predicted Reactivity:	Percent identity by BLAST analysis: Human, Mouse, Rat, Bovine, Horse, Chicken (100%).
Purification:	Immunoaffinity purified

Target Details

Target:	PHACTR1
Alternative Name:	PHACTR1 (PHACTR1 Products)
Background:	Name/Gene ID: PHACTR1 Synonyms: PHACTR1, DJ257A7.2, RPEL1, RPEL, RPEL repeat containing 1, KIAA1733
Gene ID:	221692
NCBI Accession:	NP_112210
UniProt:	Q9C0D0

Application Details

Application Notes:	Approved: IHC, IHC-P (5 µg/mL), WB (0.2 - 1 µg/mL) Usage: Immunohistochemistry: This antibody was validated for use in immunohistochemistry on a panel of 21 formalin-fixed, paraffin-embedded (FFPE) human tissues after heat induced antigen retrieval in pH 6.0 citrate buffer. After incubation with the primary antibody, slides were incubated with biotinylated secondary antibody, followed by alkaline phosphatase-streptavidin and chromogen. The stained slides were evaluated by a pathologist to confirm staining specificity. The optimal working concentration for this antibody was determined to be 5 µg/mL. Western Blot: Suggested dilution at 1 µg/mL in 5 % skim milk / PBS buffer, and HRP conjugated anti-Rabbit IgG should be diluted in 1: 50,000 - 100,000 as second antibody. ELISA titer in peptide based assay: 1:62500.
Comment:	Target Species of Antibody: Human
Restrictions:	For Research Use only

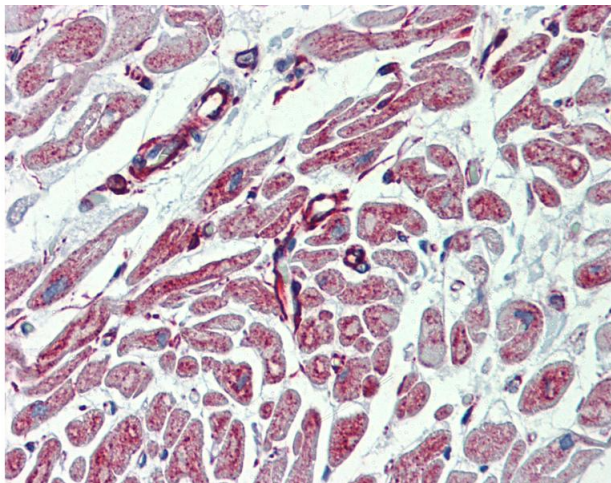
Handling

Format:	Lyophilized
Reconstitution:	Distilled water
Concentration:	Lot specific
Buffer:	Lyophilized from PBS with 2 % sucrose
Handling Advice:	Avoid repeat freeze-thaw cycles.
Storage:	4 °C, -20 °C

Handling

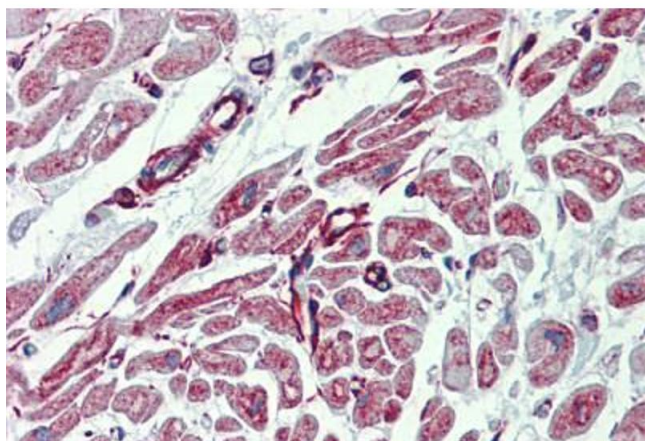
Storage Comment: Long term: -20°C, the use of 50% glycerol is recommended if storing aliquots in -20°C for long term use (up to 1 year)
Short term (less than 1 week): 4°C. Avoid freeze-thaw cycles.

Images



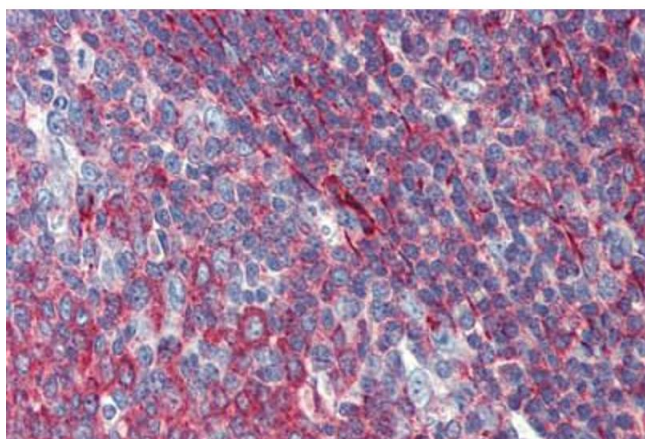
Immunohistochemistry

Image 1. Anti-PHACTR1 antibody IHC of human heart. Immunohistochemistry of formalin-fixed, paraffin-embedded tissue after heat-induced antigen retrieval. Antibody concentration 5 ug/ml. This image was taken for the unconjugated form of this product. Other fo ...



Immunohistochemistry (Formalin-fixed Paraffin-embedded Sections)

Image 2. Heart, Human: Formalin-Fixed, Paraffin-Embedded (FFPE)



Immunohistochemistry (Formalin-fixed Paraffin-embedded Sections)

Image 3. Tonsil, Human: Formalin-Fixed, Paraffin-Embedded (FFPE)

Please check the [product details page](#) for more images. Overall 4 images are available for ABIN6744441.