

Datasheet for ABIN6744442
anti-DDAH2 antibody (N-Term)

3 Images

[Go to Product page](#)

Overview

Quantity:	100 µL
Target:	DDAH2
Binding Specificity:	N-Term
Reactivity:	Human, Mouse, Rat, Dog, Horse, Rabbit, Bat
Host:	Rabbit
Clonality:	Polyclonal
Conjugate:	This DDAH2 antibody is un-conjugated
Application:	Western Blotting (WB), Immunohistochemistry (IHC), Immunohistochemistry (Paraffin-embedded Sections) (IHC (p))

Product Details

Brand:	IHC-plus™
Immunogen:	Synthetic peptide from N-Terminus of human DDAH2 (O95865, NP_039268). Percent identity by BLAST analysis: Human, Chimpanzee, Gorilla, Gibbon, Galago, Marmoset, Mouse, Rat, Panda, Dog, Bat, Horse (100%), Monkey, Bovine (92%), Elephant (85%). Type of Immunogen: Synthetic peptide
Isotype:	IgG
Specificity:	Human DDAH2
Predicted Reactivity:	Percent identity by BLAST analysis: Human, Mouse, Rat, Dog, Horse (100%) Bovine (92%).
Purification:	Immunoaffinity purified

Target Details

Target:	DDAH2
Alternative Name:	DDAH2 / DDAH (DDAH2 Products)
Background:	Name/Gene ID: DDAH2 Synonyms: DDAH2, DDAH, DDAH-2, DDAHII, G6a, Alternative name: NG30, G6a, Unknown, Dimethylargininase-2, NG30, Protein G6a, S-phase protein
Gene ID:	23564
NCBI Accession:	NP_039268
UniProt:	O95865

Application Details

Application Notes:	Approved: IHC, IHC-P (5 µg/mL), WB (1 µg/mL) Usage: Immunohistochemistry: This antibody was validated for use in immunohistochemistry on a panel of 21 formalin-fixed, paraffin-embedded (FFPE) human tissues after heat induced antigen retrieval in pH 6.0 citrate buffer. After incubation with the primary antibody, slides were incubated with biotinylated secondary antibody, followed by alkaline phosphatase-streptavidin and chromogen. The stained slides were evaluated by a pathologist to confirm staining specificity. The optimal working concentration for this antibody was determined to be 5 µg/mL. Western Blot: Suggested dilution at 1 µg/mL in 5 % skim milk / PBS buffer, and HRP conjugated anti-Rabbit IgG should be diluted in 1: 50,000 - 100,000 as second antibody. ELISA titer in peptide based assay: 1:1562500.
Comment:	Target Species of Antibody: Human
Restrictions:	For Research Use only

Handling

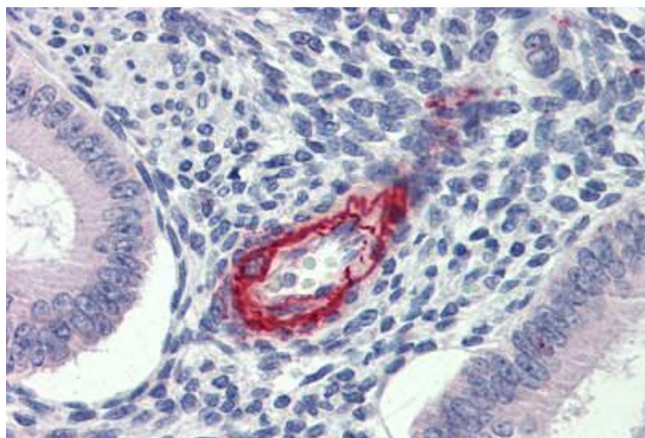
Format:	Lyophilized
Reconstitution:	Distilled water
Concentration:	Lot specific
Buffer:	Lyophilized from PBS with 2 % sucrose
Handling Advice:	Avoid repeat freeze-thaw cycles.

Handling

Storage: 4 °C, -20 °C

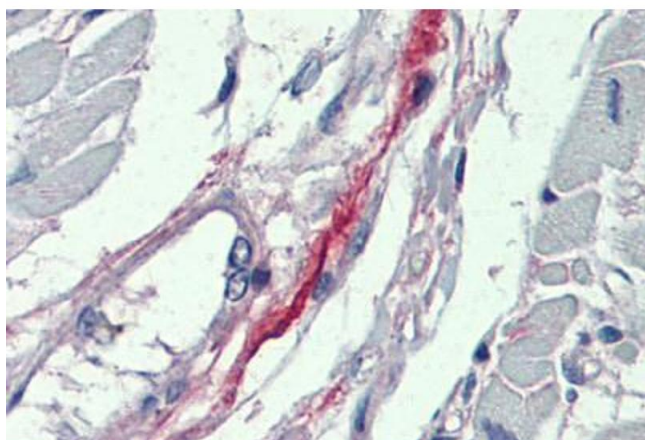
Storage Comment: Long term: -20°C, the use of 50% glycerol is recommended if storing aliquots in -20°C for long term use (up to 1 year)
Short term (less than 1 week): 4°C. Avoid freeze-thaw cycles.

Images



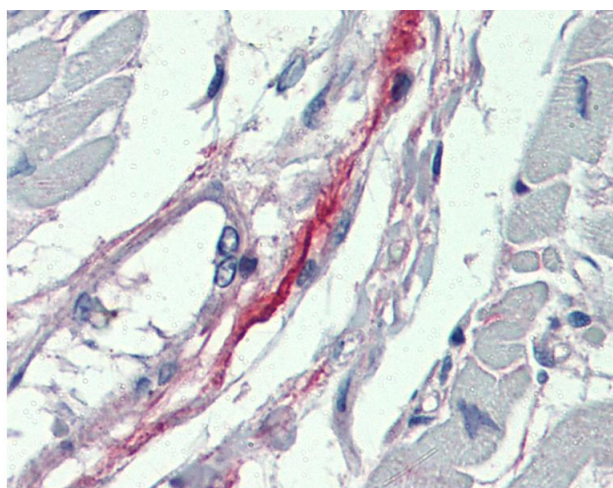
Immunohistochemistry (Formalin-fixed Paraffin-embedded Sections)

Image 1. Uterus, Human: Formalin-Fixed, Paraffin-Embedded (FFPE)



Immunohistochemistry (Formalin-fixed Paraffin-embedded Sections)

Image 2. Heart, Human: Formalin-Fixed, Paraffin-Embedded (FFPE)



Immunohistochemistry

Image 3. Anti-DDAH2 antibody IHC of human heart. Immunohistochemistry of formalin-fixed, paraffin-embedded tissue after heat-induced antigen retrieval. Antibody concentration 5 ug/ml. This image was taken for the unconjugated form of this product. Other form ...