

Datasheet for ABIN6744443  
**anti-STAT5B antibody (N-Term)**

## 3 Images

[Go to Product page](#)

## Overview

Quantity:	100 µL
Target:	STAT5B
Binding Specificity:	N-Term
Reactivity:	Human, Mouse, Rat, Dog, Horse, Pig, Rabbit, Chicken
Host:	Rabbit
Clonality:	Polyclonal
Conjugate:	This STAT5B antibody is un-conjugated
Application:	Western Blotting (WB), Immunohistochemistry (IHC), Immunohistochemistry (Paraffin-embedded Sections) (IHC (p))

## Product Details

Brand:	IHC-plus™
Immunogen:	Synthetic peptide from N-Terminus of human STAT5B (P51692, NP_036580). Percent identity by BLAST analysis: Human, Gorilla, Gibbon, Galago, Mouse, Rat, Elephant, Panda, Dog, Rabbit, Horse, Pig, Opossum, Zebra finch, Chicken (100%), Bovine, Bat, Guinea pig, Xenopus (92%), Monkey, Sheep, Hamster, Platypus (85%).  Type of Immunogen: Synthetic peptide
Isotype:	IgG
Specificity:	Human STAT5b
Predicted Reactivity:	Percent identity by BLAST analysis: Human, Dog, Rabbit, Horse, Pig, Chicken (100%) Bovine

## Product Details

(91%) Xenopus (85%).

Purification: Immunoaffinity purified

## Target Details

Target: STAT5B

Alternative Name: STAT5B / STAT ([STAT5B Products](#))

Background: Name/Gene ID: STAT5B

Synonyms: STAT5B, Transcription factor STAT5B, STAT5

Gene ID: 6777

NCBI Accession: [NP\\_036580](#)

UniProt: [P51692](#)

Pathways: [JAK-STAT Signaling](#), [RTK Signaling](#), [Response to Growth Hormone Stimulus](#), [C21-Steroid Hormone Metabolic Process](#), [Regulation of Leukocyte Mediated Immunity](#), [Positive Regulation of Immune Effector Process](#), [CXCR4-mediated Signaling Events](#), [Activated T Cell Proliferation](#)

## Application Details

Application Notes: Approved: IHC, IHC-P (5 µg/mL), WB (1 µg/mL)

Usage: Immunohistochemistry: This antibody was validated for use in immunohistochemistry on a panel of 21 formalin-fixed, paraffin-embedded (FFPE) human tissues after heat induced antigen retrieval in pH 6.0 citrate buffer. After incubation with the primary antibody, slides were incubated with biotinylated secondary antibody, followed by alkaline phosphatase-streptavidin and chromogen. The stained slides were evaluated by a pathologist to confirm staining specificity. The optimal working concentration for this antibody was determined to be 5 µg/mL. Western Blot: Suggested dilution at 1 µg/mL in 5 % skim milk / PBS buffer, and HRP conjugated anti-Rabbit IgG should be diluted in 1: 50,000 - 100,000 as second antibody. ELISA titer in peptide based assay: 1:1562500.

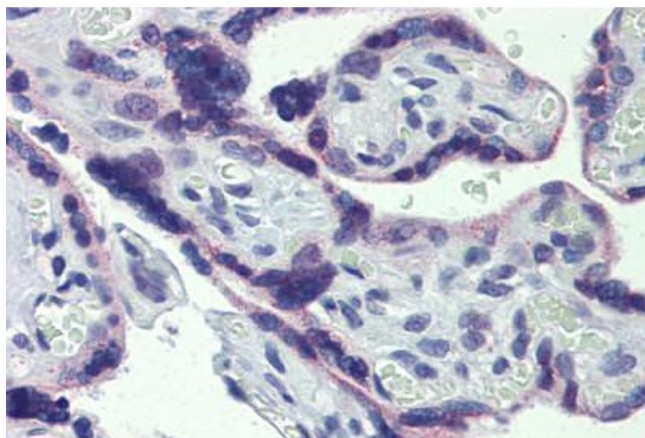
Comment: Target Species of Antibody: Human

Restrictions: For Research Use only

## Handling

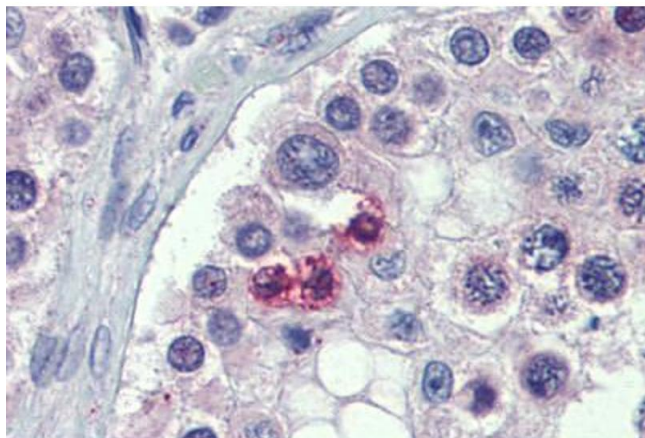
Format:	Lyophilized
Reconstitution:	Reconstitute with 50 µL sterile ddH <sub>2</sub> O.
Concentration:	Lot specific
Buffer:	Lyophilized from PBS with 2 % sucrose
Handling Advice:	Avoid repeat freeze-thaw cycles.
Storage:	4 °C, -20 °C
Storage Comment:	Long term: -20°C, the use of 50% glycerol is recommended if storing aliquots in -20°C for long term use (up to 1 year) Short term (less than 1 week): 4°C. Avoid freeze-thaw cycles.

## Images



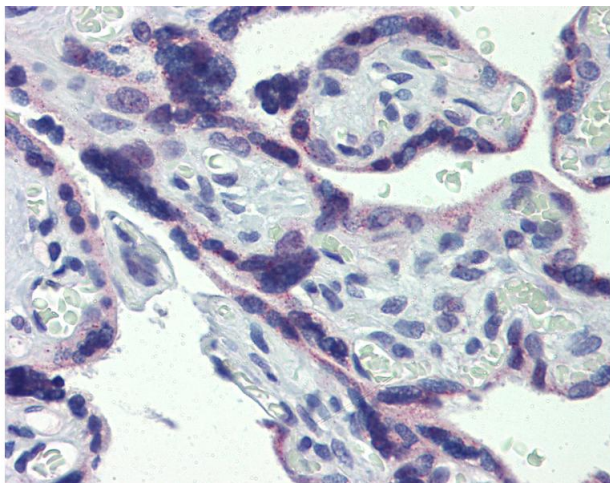
### Immunohistochemistry (Formalin-fixed Paraffin-embedded Sections)

**Image 1.** Placenta, Human: Formalin-Fixed, Paraffin-Embedded (FFPE)



### Immunohistochemistry (Formalin-fixed Paraffin-embedded Sections)

**Image 2.** Testis, Human: Formalin-Fixed, Paraffin-Embedded (FFPE)



#### Immunohistochemistry

**Image 3.** Anti-STAT5B antibody IHC of human placenta. Immunohistochemistry of formalin-fixed, paraffin-embedded tissue after heat-induced antigen retrieval. Antibody concentration 5 ug/ml. This image was taken for the unconjugated form of this product. Other ...