

Datasheet for ABIN6744446
anti-CBP antibody (AA 144-193)[Go to Product page](#)

3 Images

Overview

Quantity:	100 µL
Target:	CBP (CREBBP)
Binding Specificity:	AA 144-193
Reactivity:	Human, Mouse, Rat, Cow, Dog, Chicken, Guinea Pig, Horse, Rabbit
Host:	Rabbit
Clonality:	Polyclonal
Conjugate:	This CBP antibody is un-conjugated
Application:	Western Blotting (WB), Immunohistochemistry (IHC), Immunohistochemistry (Paraffin-embedded Sections) (IHC (p))

Product Details

Brand:	IHC-plus™
Immunogen:	Synthetic peptide located between aa144-193 of human CREBBP (Q4LE28, NP_001073315). Percent identity by BLAST analysis: Human, Gorilla, Gibbon, Monkey, Galago, Mouse, Rat, Elephant, Panda, Dog, Bovine, Rabbit, Horse, Opossum, Guinea pig, Turkey, Zebra finch, Chicken (100%), Marmoset (93%), Platypus (85%). Type of Immunogen: Synthetic peptide
Isotype:	IgG
Specificity:	Human CREBBP
Predicted Reactivity:	Percent identity by BLAST analysis: Human, Mouse, Rat, Dog, Bovine, Rabbit, Horse, Guinea pig,

Product Details

Chicken (100%).

Purification: Immunoaffinity purified

Target Details

Target: CBP (CREBBP)

Alternative Name: CREBBP / CBP ([CREBBP Products](#))

Background: Name/Gene ID: CREBBP

Synonyms: CREBBP, CREB binding protein, CREB-binding protein, KAT3A, RSTS, Rubinstein-Taybi syndrome, RTS, CBP

Gene ID: 1387

NCBI Accession: [NP_001073315](#)

UniProt: [Q92793](#)

Pathways: [TCR Signaling](#), [Interferon-gamma Pathway](#), [Stem Cell Maintenance](#), [Chromatin Binding](#), [Regulation of Lipid Metabolism by PPARalpha](#)

Application Details

Application Notes: Approved: IHC, IHC-P (5 µg/mL), WB (1 µg/mL)

Usage: Immunohistochemistry: This antibody was validated for use in immunohistochemistry on a panel of 21 formalin-fixed, paraffin-embedded (FFPE) human tissues after heat induced antigen retrieval in pH 6.0 citrate buffer. After incubation with the primary antibody, slides were incubated with biotinylated secondary antibody, followed by alkaline phosphatase-streptavidin and chromogen. The stained slides were evaluated by a pathologist to confirm staining specificity. The optimal working concentration for this antibody was determined to be 5 µg/mL. Western Blot: Suggested dilution at 1 µg/mL in 5 % skim milk / PBS buffer, and HRP conjugated anti-Rabbit IgG should be diluted in 1: 50,000 - 100,000 as second antibody. ELISA titer in peptide based assay: 1:312500.

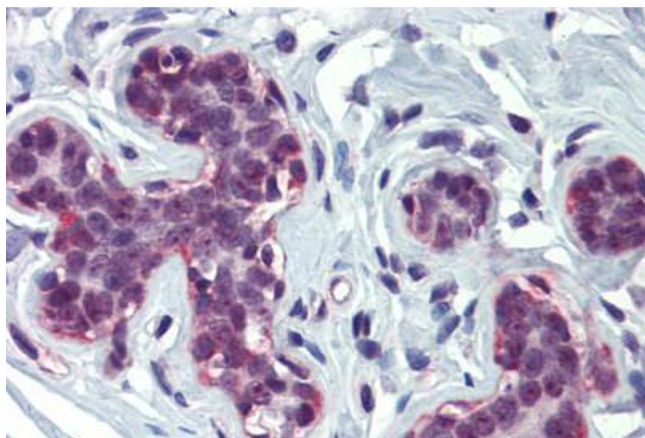
Comment: Target Species of Antibody: Human

Restrictions: For Research Use only

Handling

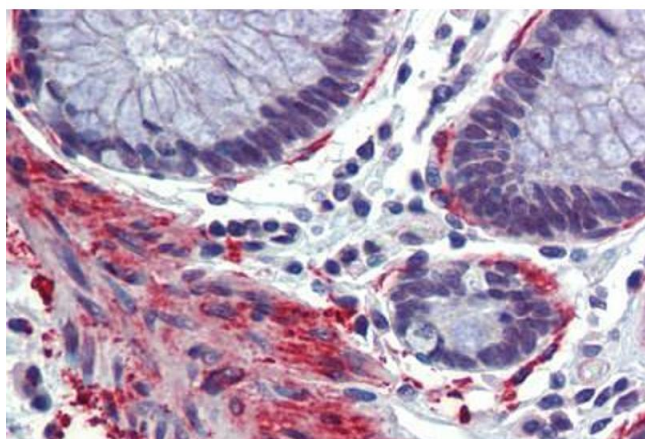
Format:	Lyophilized
Reconstitution:	Distilled water
Concentration:	Lot specific
Buffer:	Lyophilized from PBS with 2 % sucrose
Handling Advice:	Avoid repeat freeze-thaw cycles.
Storage:	4 °C, -20 °C
Storage Comment:	Long term: -20°C, the use of 50% glycerol is recommended if storing aliquots in -20°C for long term use (up to 1 year) Short term (less than 1 week): 4°C. Avoid freeze-thaw cycles.

Images



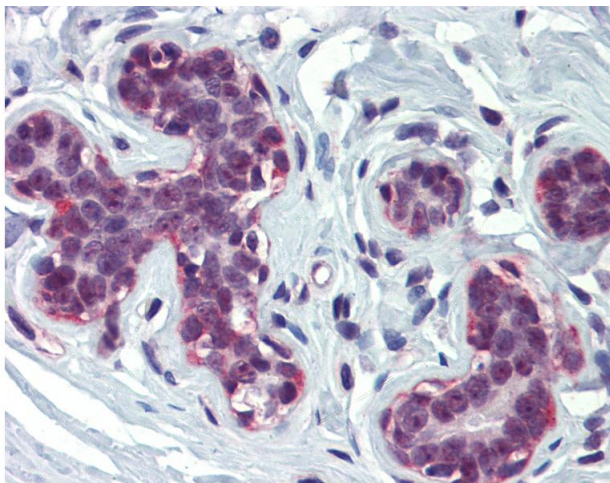
Immunohistochemistry (Formalin-fixed Paraffin-embedded Sections)

Image 1. Breast, Human: Formalin-Fixed, Paraffin-Embedded (FFPE)



Immunohistochemistry (Formalin-fixed Paraffin-embedded Sections)

Image 2. Colon, Human: Formalin-Fixed, Paraffin-Embedded (FFPE)



Immunohistochemistry

Image 3. Anti-CREBBP antibody IHC of human breast. Immunohistochemistry of formalin-fixed, paraffin-embedded tissue after heat-induced antigen retrieval. Antibody concentration 5 ug/ml. This image was taken for the unconjugated form of this product. Other fo ...