

Datasheet for ABIN6744451
anti-ACAA1 antibody (AA 36-85)

3 Images

[Go to Product page](#)

Overview

Quantity:	100 µL
Target:	ACAA1
Binding Specificity:	AA 36-85
Reactivity:	Human, Mouse, Rat, Rabbit, Zebrafish (Danio rerio), Guinea Pig, Horse, Monkey
Host:	Rabbit
Clonality:	Polyclonal
Conjugate:	This ACAA1 antibody is un-conjugated
Application:	Western Blotting (WB), Immunohistochemistry (IHC), Immunohistochemistry (Paraffin-embedded Sections) (IHC (p))

Product Details

Brand:	IHC-plus™
Immunogen:	Synthetic peptide located between aa36-85 of human ACAA1 (P09110, NP_001598). Percent identity by BLAST analysis: Human, Chimpanzee, Gorilla, Monkey, Galago, Marmoset, Rat, Panda, Rabbit, Horse, Guinea pig (100%), Gibbon, Elephant, Dog, Bovine, Opossum, Zebra finch, Chicken (92%), Lizard, Xenopus, Stickleback (90%), Mouse, Zebrafish (85%). Type of Immunogen: Synthetic peptide
Isotype:	IgG
Specificity:	Human ACAA1
Predicted Reactivity:	Percent identity by BLAST analysis: Human, Rat, Rabbit, Horse, Guinea pig (100%) Dog, Bovine,

Product Details

Chicken (92%) Mouse, Zebrafish (85%).

Purification: Immunoaffinity purified

Target Details

Target: ACAA1

Alternative Name: ACAA1 ([ACAA1 Products](#))

Background: Name/Gene ID: ACAA1

Synonyms: ACAA1, Acetyl-CoA acyltransferase 1, ACAA, Acetyl-CoA acyltransferase, Beta-ketothiolase, THIO, PTHIO

Gene ID: 30

NCBI Accession: [NP_001598](#)

UniProt: [P09110](#)

Pathways: [Monocarboxylic Acid Catabolic Process](#)

Application Details

Application Notes: Approved: IHC, IHC-P (5 µg/mL), WB (1 µg/mL)

Usage: Immunohistochemistry: This antibody was validated for use in immunohistochemistry on a panel of 21 formalin-fixed, paraffin-embedded (FFPE) human tissues after heat induced antigen retrieval in pH 6.0 citrate buffer. After incubation with the primary antibody, slides were incubated with biotinylated secondary antibody, followed by alkaline phosphatase-streptavidin and chromogen. The stained slides were evaluated by a pathologist to confirm staining specificity. The optimal working concentration for this antibody was determined to be 5 µg/mL. Western Blot: Suggested dilution at 1 µg/mL in 5 % skim milk / PBS buffer, and HRP conjugated anti-Rabbit IgG should be diluted in 1: 50,000 - 100,000 as second antibody. ELISA titer in peptide based assay: 1:1562500.

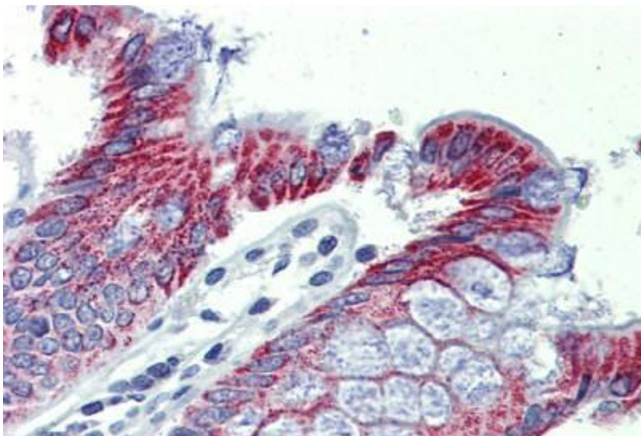
Comment: Target Species of Antibody: Human

Restrictions: For Research Use only

Handling

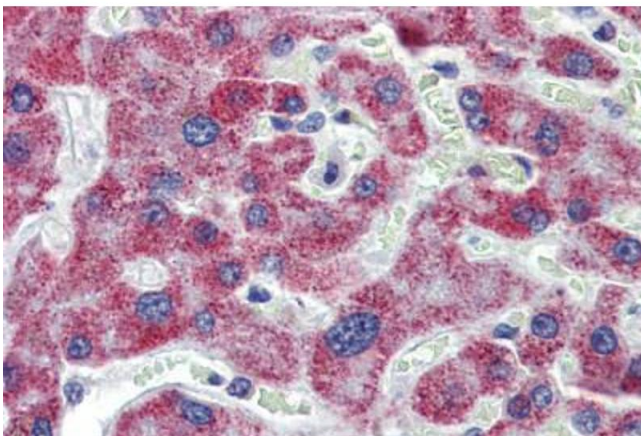
Format:	Lyophilized
Reconstitution:	Distilled water
Concentration:	Lot specific
Buffer:	Lyophilized from PBS with 2 % sucrose
Handling Advice:	Avoid repeat freeze-thaw cycles.
Storage:	4 °C,-20 °C
Storage Comment:	Long term: -20°C, the use of 50% glycerol is recommended if storing aliquots in -20°C for long term use (up to 1 year) Short term (less than 1 week): 4°C. Avoid freeze-thaw cycles.

Images



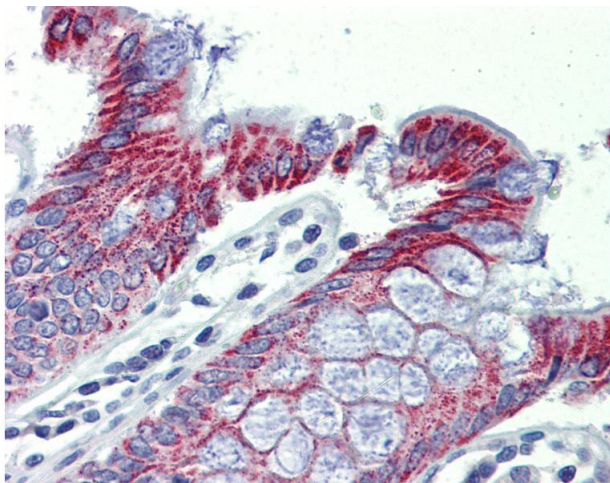
Immunohistochemistry (Formalin-fixed Paraffin-embedded Sections)

Image 1. Colon, Human: Formalin-Fixed, Paraffin-Embedded (FFPE)



Immunohistochemistry (Formalin-fixed Paraffin-embedded Sections)

Image 2. Liver, Human: Formalin-Fixed, Paraffin-Embedded (FFPE)



Immunohistochemistry

Image 3. Anti-ACAA1 antibody IHC of human colon. Immunohistochemistry of formalin-fixed, paraffin-embedded tissue after heat-induced antigen retrieval. Antibody concentration 5 ug/ml. This image was taken for the unconjugated form of this product. Other form ...