

Datasheet for ABIN6744454
anti-FUBP3 antibody (AA 503-552)

4 Images

[Go to Product page](#)

Overview

Quantity:	100 µL
Target:	FUBP3
Binding Specificity:	AA 503-552
Reactivity:	Human, Mouse, Rat, Guinea Pig, Dog
Host:	Rabbit
Clonality:	Polyclonal
Conjugate:	This FUBP3 antibody is un-conjugated
Application:	Western Blotting (WB), Immunohistochemistry (IHC), Immunohistochemistry (Paraffin-embedded Sections) (IHC (p))

Product Details

Brand:	IHC-plus™
Immunogen:	Synthetic peptide located between aa503-552 of human FUBP3 (Q96I24, NP_003925). Percent identity by BLAST analysis: Human, Chimpanzee, Gorilla, Gibbon (100%), Monkey, Galago, Marmoset, Elephant, Bovine, Bat, Horse, Pig (92%), Mouse, Rat, Dog (85%), Guinea pig (84%). Type of Immunogen: Synthetic peptide
Isotype:	IgG
Specificity:	Human FUBP3 / FBP3
Predicted Reactivity:	Percent identity by BLAST analysis: Human (100%) Bovine, Horse, Pig (92%) Mouse, Rat, Dog (85%) Guinea pig (84%).

Product Details

Purification: Immunoaffinity purified

Target Details

Target: FUBP3

Alternative Name: FUBP3 ([FUBP3 Products](#))

Background: Name/Gene ID: FUBP3

Synonyms: FUBP3, FBP3, FUSE-binding protein 3

Gene ID: 8939

NCBI Accession: [NP_003925](#)

UniProt: [Q96I24](#)

Application Details

Application Notes: Approved: IHC, IHC-P (5 µg/mL), WB (1 µg/mL)

Usage: Immunohistochemistry: This antibody was validated for use in immunohistochemistry on a panel of 21 formalin-fixed, paraffin-embedded (FFPE) human tissues after heat induced antigen retrieval in pH 6.0 citrate buffer. After incubation with the primary antibody, slides were incubated with biotinylated secondary antibody, followed by alkaline phosphatase-streptavidin and chromogen. The stained slides were evaluated by a pathologist to confirm staining specificity. The optimal working concentration for this antibody was determined to be 5 µg/mL. Western Blot: Suggested dilution at 1 µg/mL in 5 % skim milk / PBS buffer, and HRP conjugated anti-Rabbit IgG should be diluted in 1: 50,000 - 100,000 as second antibody. ELISA titer in peptide based assay: 1:62500.

Comment: Target Species of Antibody: Human

Restrictions: For Research Use only

Handling

Format: Lyophilized

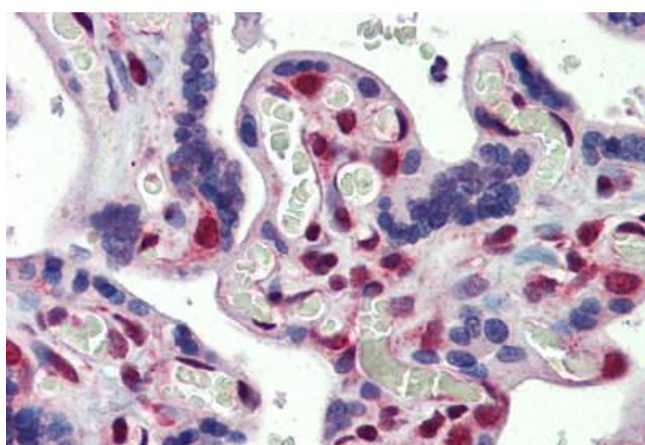
Reconstitution: Distilled water

Concentration: Lot specific

Handling

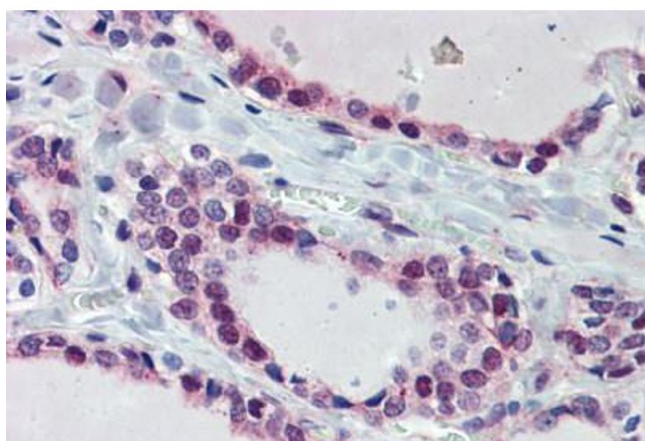
Buffer:	Lyophilized from PBS with 2 % sucrose
Handling Advice:	Avoid repeat freeze-thaw cycles.
Storage:	4 °C, -20 °C
Storage Comment:	Long term: -20°C, the use of 50% glycerol is recommended if storing aliquots in -20°C for long term use (up to 1 year) Short term (less than 1 week): 4°C. Avoid freeze-thaw cycles.

Images



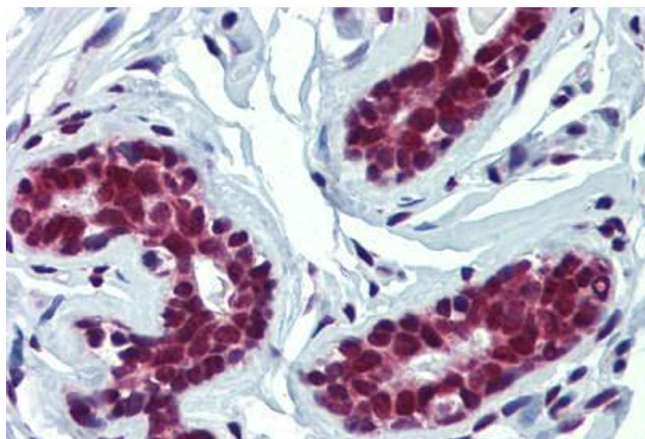
Immunohistochemistry (Formalin-fixed Paraffin-embedded Sections)

Image 1. Placenta, Human: Formalin-Fixed, Paraffin-Embedded (FFPE)



Immunohistochemistry (Formalin-fixed Paraffin-embedded Sections)

Image 2. Thyroid, Human: Formalin-Fixed, Paraffin-Embedded (FFPE)



Immunohistochemistry (Formalin-fixed Paraffin-embedded Sections)

Image 3. Breast, Human: Formalin-Fixed, Paraffin-Embedded (FFPE)

Please check the [product details page](#) for more images. Overall 4 images are available for ABIN6744454.