



[Go to Product page](#)

Datasheet for ABIN6744456

## anti-GABARAPL1 antibody (N-Term)

### 3 Images

#### Overview

Quantity:	100 µL
Target:	GABARAPL1
Binding Specificity:	N-Term
Reactivity:	Human, Rat, Mouse, Dog, Guinea Pig, Horse, Rabbit, Cow, Pig, Hamster, Monkey, Chicken, Xenopus laevis
Host:	Rabbit
Clonality:	Polyclonal
Conjugate:	This GABARAPL1 antibody is un-conjugated
Application:	Western Blotting (WB), Immunohistochemistry (IHC), Immunohistochemistry (Paraffin-embedded Sections) (IHC (p))

#### Product Details

Brand:	IHC-plus™
Immunogen:	Synthetic peptide from N-Terminus of human GABARAPL1 (Q9H0R8, NP_113600). Percent identity by BLAST analysis: Human, Chimpanzee, Gorilla, Orangutan, Gibbon, Monkey, Galago, Marmoset, Mouse, Rat, Hamster, Dog, Bovine, Rabbit, Horse, Pig, Opossum, Guinea pig, Zebra finch, Chicken, Xenopus (100%), Lizard (85%).  Type of Immunogen: Synthetic peptide
Isotype:	IgG
Specificity:	Human GABARAPL1

## Product Details

---

Predicted Reactivity: Percent identity by BLAST analysis: Human, Dog, Pig, Chicken (100%).

---

Purification: Immunoaffinity purified

---

## Target Details

---

Target: GABARAPL1

---

Alternative Name: GABARAPL1 / ATG8 ([GABARAPL1 Products](#))

---

Background: Name/Gene ID: GABARAPL1

Synonyms: GABARAPL1, ATG8, ATG8L, APG8L, GABARAPL1-a, GEC-1, GEC1, APG8-LIKE, ATG8B

---

Gene ID: 23710

---

NCBI Accession: [NP\\_113600](#)

---

UniProt: [Q9H0R8](#)

---

Pathways: [Autophagy](#)

---

## Application Details

---

Application Notes: Approved: IHC, IHC-P (5 µg/mL), WB (1 µg/mL)

Usage: Immunohistochemistry: This antibody was validated for use in immunohistochemistry on a panel of 21 formalin-fixed, paraffin-embedded (FFPE) human tissues after heat induced antigen retrieval in pH 6.0 citrate buffer. After incubation with the primary antibody, slides were incubated with biotinylated secondary antibody, followed by alkaline phosphatase-streptavidin and chromogen. The stained slides were evaluated by a pathologist to confirm staining specificity. The optimal working concentration for this antibody was determined to be 5 µg/mL. Western Blot: Suggested dilution at 1 µg/mL in 5 % skim milk / PBS buffer, and HRP conjugated anti-Rabbit IgG should be diluted in 1: 50,000 - 100,000 as second antibody. ELISA titer in peptide based assay: 1:312500.

---

Comment: Target Species of Antibody: Human

---

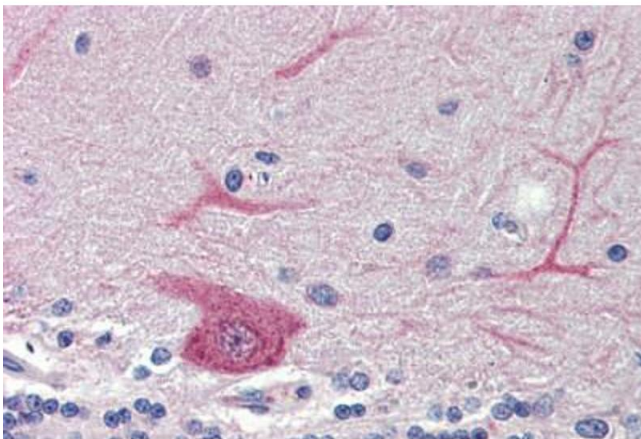
Restrictions: For Research Use only

---

## Handling

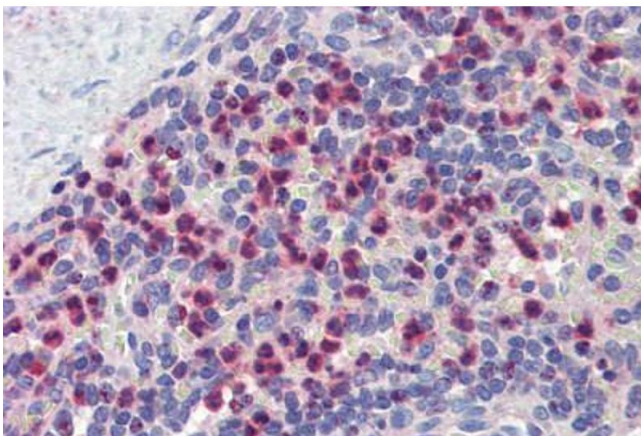
Format:	Lyophilized
Reconstitution:	Distilled water
Concentration:	Lot specific
Buffer:	Lyophilized from PBS with 2 % sucrose
Handling Advice:	Avoid repeat freeze-thaw cycles.
Storage:	4 °C,-20 °C
Storage Comment:	Long term: -20°C, the use of 50% glycerol is recommended if storing aliquots in -20°C for long term use (up to 1 year) Short term (less than 1 week): 4°C. Avoid freeze-thaw cycles.

## Images



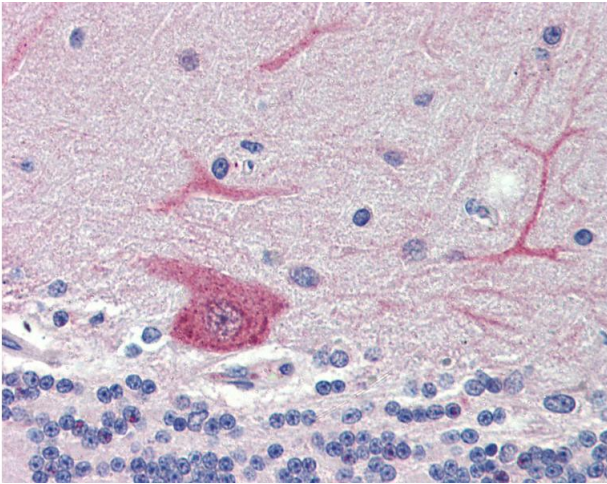
### Immunohistochemistry (Formalin-fixed Paraffin-embedded Sections)

**Image 1.** Brain, cerebellum, Human: Formalin-Fixed, Paraffin-Embedded (FFPE)



### Immunohistochemistry (Formalin-fixed Paraffin-embedded Sections)

**Image 2.** Spleen, Human: Formalin-Fixed, Paraffin-Embedded (FFPE)



### Immunohistochemistry

**Image 3.** Anti-GABARAPL1 antibody IHC of human brain, cerebellum. Immunohistochemistry of formalin-fixed, paraffin-embedded tissue after heat-induced antigen retrieval. Antibody concentration 5 ug/ml. This image was taken for the unconjugated form of this pro ...