

Datasheet for ABIN6744457
anti-EHD4 antibody (AA 396-445)[Go to Product page](#)

3 Images

Overview

Quantity:	100 µL
Target:	EHD4
Binding Specificity:	AA 396-445
Reactivity:	Human, Mouse, Rat, Dog, Horse, Cow, Guinea Pig, Rabbit, Bat, Monkey
Host:	Rabbit
Clonality:	Polyclonal
Conjugate:	This EHD4 antibody is un-conjugated
Application:	Western Blotting (WB), Immunohistochemistry (IHC), Immunohistochemistry (Paraffin-embedded Sections) (IHC (p))

Product Details

Brand:	IHC-plus™
Immunogen:	Synthetic peptide located between aa396-445 of human EHD4 (Q9H223, NP_644670). Percent identity by BLAST analysis: Human, Chimpanzee, Gorilla, Monkey, Galago, Mouse, Rat, Panda, Dog, Bovine, Bat, Rabbit, Horse, Opossum, Guinea pig, Platypus, Lizard (100%), Elephant, Turkey, Zebra finch (92%). Type of Immunogen: Synthetic peptide
Isotype:	IgG
Specificity:	Human EHD4
Predicted Reactivity:	Percent identity by BLAST analysis: Human, Mouse, Rat, Dog, Bovine, Rabbit, Horse, Guinea pig

Product Details

(100%).

Purification: Immunoaffinity purified

Target Details

Target: EHD4

Alternative Name: EHD4 ([EHD4 Products](#))

Background: Name/Gene ID: EHD4

Synonyms: EHD4, EH domain-containing protein 4, EH-domain containing 4, EH domain containing 4, HCA10, HCA11, PAST4, Ortholog of rat pincher, PAST homolog 4

Gene ID: 30844

NCBI Accession: [NP_644670](#)

UniProt: [Q9H223](#)

Application Details

Application Notes: Approved: IHC, IHC-P (5 µg/mL), WB (1 µg/mL)

Usage: Immunohistochemistry: This antibody was validated for use in immunohistochemistry on a panel of 21 formalin-fixed, paraffin-embedded (FFPE) human tissues after heat induced antigen retrieval in pH 6.0 citrate buffer. After incubation with the primary antibody, slides were incubated with biotinylated secondary antibody, followed by alkaline phosphatase-streptavidin and chromogen. The stained slides were evaluated by a pathologist to confirm staining specificity. The optimal working concentration for this antibody was determined to be 5 µg/mL. Western Blot: Suggested dilution at 1 µg/mL in 5 % skim milk / PBS buffer, and HRP conjugated anti-Rabbit IgG should be diluted in 1: 50,000 - 100,000 as second antibody. ELISA titer in peptide based assay: 1:62500.

Comment: Target Species of Antibody: Human

Restrictions: For Research Use only

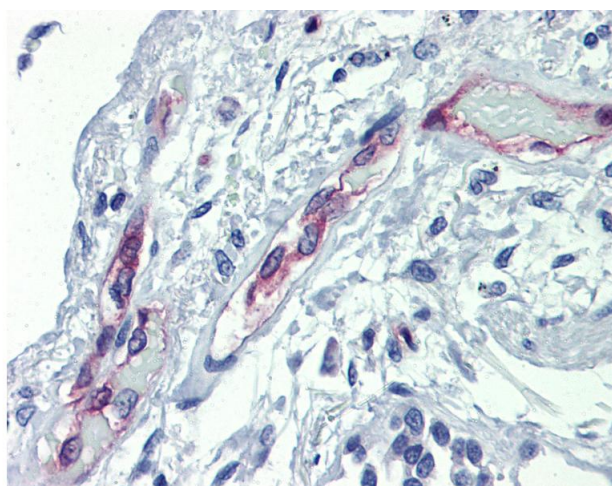
Handling

Format: Lyophilized

Handling

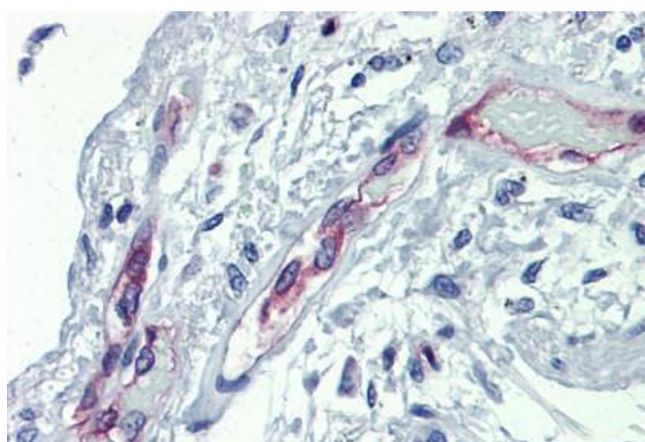
Reconstitution:	Distilled water
Concentration:	Lot specific
Buffer:	Lyophilized from PBS with 2 % sucrose
Handling Advice:	Avoid repeat freeze-thaw cycles.
Storage:	4 °C, -20 °C
Storage Comment:	Long term: -20°C, the use of 50% glycerol is recommended if storing aliquots in -20°C for long term use (up to 1 year) Short term (less than 1 week): 4°C. Avoid freeze-thaw cycles.

Images



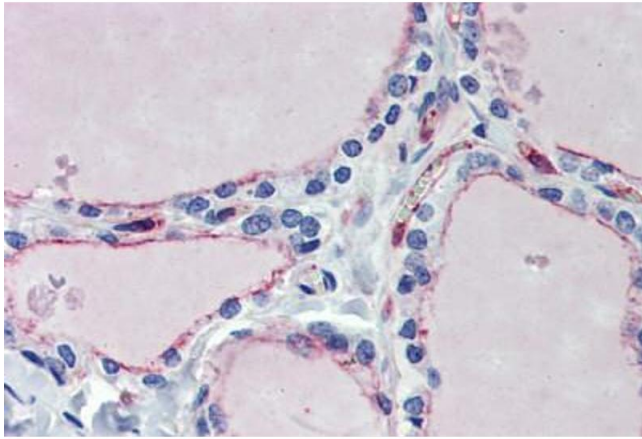
Immunohistochemistry

Image 1. Anti-EHD4 antibody IHC of human lung. Immunohistochemistry of formalin-fixed, paraffin-embedded tissue after heat-induced antigen retrieval. Antibody concentration 5 ug/ml. This image was taken for the unconjugated form of this product. Other forms ...



Immunohistochemistry (Formalin-fixed Paraffin-embedded Sections)

Image 2. Lung, Human: Formalin-Fixed, Paraffin-Embedded (FFPE)



Immunohistochemistry (Formalin-fixed Paraffin-embedded Sections)

Image 3. Thyroid, Human: Formalin-Fixed, Paraffin-Embedded (FFPE)