

Datasheet for ABIN6744458
anti-SH3BP2 antibody (AA 432-481)[Go to Product page](#)

3 Images

Overview

Quantity:	100 µL
Target:	SH3BP2
Binding Specificity:	AA 432-481
Reactivity:	Human, Mouse, Rat, Monkey, Cow
Host:	Rabbit
Clonality:	Polyclonal
Conjugate:	This SH3BP2 antibody is un-conjugated
Application:	Western Blotting (WB), Immunohistochemistry (IHC), Immunohistochemistry (Paraffin-embedded Sections) (IHC (p))

Product Details

Brand:	IHC-plus™
Immunogen:	Synthetic peptide located between aa432-481 of human SH3BP2 (P78314, NP_003014). Percent identity by BLAST analysis: Human, Gorilla, Marmoset, Mouse, Rat, Opossum (100%), Elephant, Bat, Rabbit, Guinea pig (92%), Galago (85%), Bovine (84%), Zebra finch (83%). Type of Immunogen: Synthetic peptide
Isotype:	IgG
Specificity:	Human SH3BP2
Predicted Reactivity:	Percent identity by BLAST analysis: Human, Mouse, Rat (100%) Rabbit, Guinea pig (92%) Bovine (84%).

Product Details

Purification: Immunoaffinity purified

Target Details

Target: SH3BP2

Alternative Name: SH3BP2 ([SH3BP2 Products](#))

Background: Name/Gene ID: SH3BP2

Synonyms: SH3BP2, Abl-SH3 binding protein 2, 3BP-2, 3BP2, Cherubism, CRPM, RES4-23, SH3 domain-binding protein 2, TNFAIP3 interacting protein 2, CRBM, SH3-domain binding protein 2

Gene ID: 6452

NCBI Accession: [NP_003014](#)

UniProt: [P78314](#)

Pathways: [TCR Signaling](#)

Application Details

Application Notes: Approved: IHC, IHC-P (5 µg/mL), WB (1 µg/mL)

Usage: Immunohistochemistry: This antibody was validated for use in immunohistochemistry on a panel of 21 formalin-fixed, paraffin-embedded (FFPE) human tissues after heat induced antigen retrieval in pH 6.0 citrate buffer. After incubation with the primary antibody, slides were incubated with biotinylated secondary antibody, followed by alkaline phosphatase-streptavidin and chromogen. The stained slides were evaluated by a pathologist to confirm staining specificity. The optimal working concentration for this antibody was determined to be 5 µg/mL. Western Blot: Suggested dilution at 1 µg/mL in 5 % skim milk / PBS buffer, and HRP conjugated anti-Rabbit IgG should be diluted in 1: 50,000 - 100,000 as second antibody. ELISA titer in peptide based assay: 1:1562500.

Comment: Target Species of Antibody: Human

Restrictions: For Research Use only

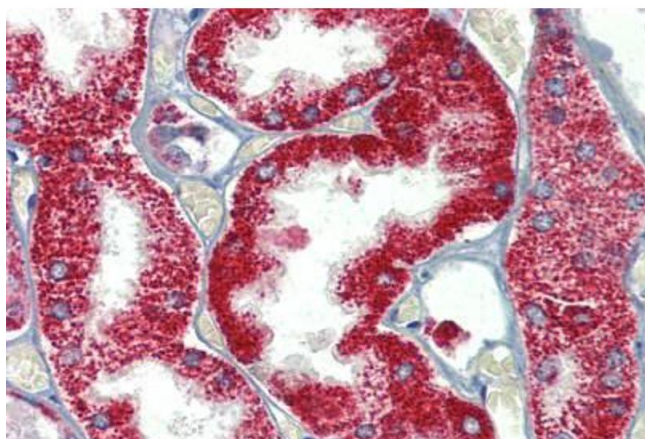
Handling

Format: Lyophilized

Handling

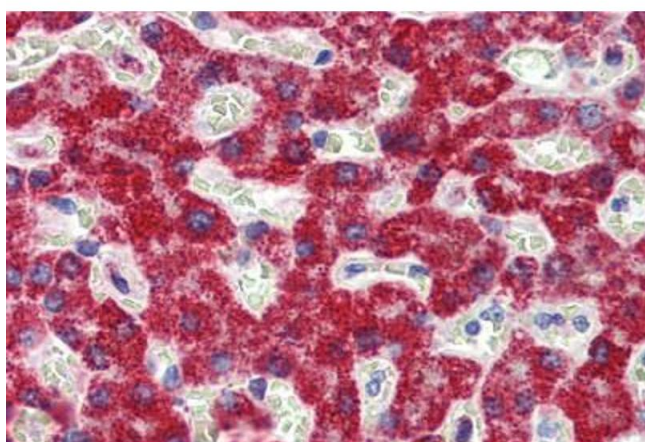
Reconstitution:	Distilled water
Concentration:	Lot specific
Buffer:	Lyophilized from PBS with 2 % sucrose
Handling Advice:	Avoid repeat freeze-thaw cycles.
Storage:	4 °C, -20 °C
Storage Comment:	Long term: -20°C, the use of 50% glycerol is recommended if storing aliquots in -20°C for long term use (up to 1 year) Short term (less than 1 week): 4°C. Avoid freeze-thaw cycles.

Images



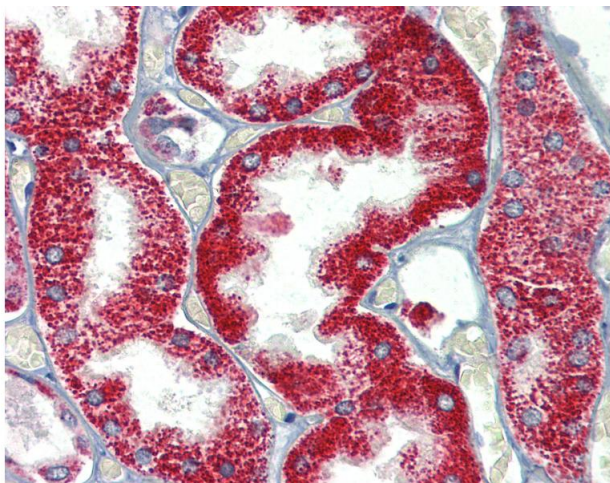
Immunohistochemistry (Formalin-fixed Paraffin-embedded Sections)

Image 1. Kidney, Human: Formalin-Fixed, Paraffin-Embedded (FFPE)



Immunohistochemistry (Formalin-fixed Paraffin-embedded Sections)

Image 2. Liver, Human: Formalin-Fixed, Paraffin-Embedded (FFPE)



Immunohistochemistry

Image 3. Anti-SH3BP2 antibody IHC of human kidney. Immunohistochemistry of formalin-fixed, paraffin-embedded tissue after heat-induced antigen retrieval. Antibody concentration 5 ug/ml. This image was taken for the unconjugated form of this product. Other fo ...