

Datasheet for ABIN6744460  
**anti-MYL6 antibody (AA 72-121)**

## 3 Images

[Go to Product page](#)

## Overview

Quantity:	100 µL
Target:	MYL6
Binding Specificity:	AA 72-121
Reactivity:	Human, Mouse, Rat, Cow, Sheep, Dog, Guinea Pig, Horse, Rabbit, Pig, Zebrafish (Danio rerio), Bat, Monkey
Host:	Rabbit
Clonality:	Polyclonal
Conjugate:	This MYL6 antibody is un-conjugated
Application:	Western Blotting (WB), Immunohistochemistry (IHC), Immunohistochemistry (Paraffin-embedded Sections) (IHC (p))

## Product Details

Brand:	IHC-plus™
Immunogen:	Synthetic peptide located between aa72-121 of human MYL6 (P60660, NP_524147). Percent identity by BLAST analysis: Human, Chimpanzee, Gorilla, Orangutan, Monkey, Galago, Marmoset, Mouse, Rat, Sheep, Elephant, Dog, Bovine, Bat, Rabbit, Horse, Pig, Guinea pig, Lizard (100%), Gibbon, Panda, Opossum (91%), Platypus (90%), Hamster, Turkey, Zebra finch, Chicken, Zebrafish (85%), Xenopus (84%).  Type of Immunogen: Synthetic peptide
Isotype:	IgG

## Product Details

Specificity:	Human MYL6
Predicted Reactivity:	Percent identity by BLAST analysis: Human, Mouse, Rat, Dog, Bovine, Pig, Guinea pig (100%) Chicken (85%).
Purification:	Immunoaffinity purified

## Target Details

Target:	MYL6
Alternative Name:	MYL6 ( <a href="#">MYL6 Products</a> )
Background:	Name/Gene ID: MYL6  Synonyms: MYL6, 17 kDa myosin light chain, ESMC, LC17, LC17B, LC17-GI, LC17A, MLC3NM, MLC1SM, MLC3SM, Myosin light chain A3, Myosin light chain 3, LC17-NM, MLC-3, Myosin light polypeptide 6, Myosin light chain alkali 3
Gene ID:	4637
NCBI Accession:	<a href="#">NP_524147</a>
UniProt:	<a href="#">P60660</a>

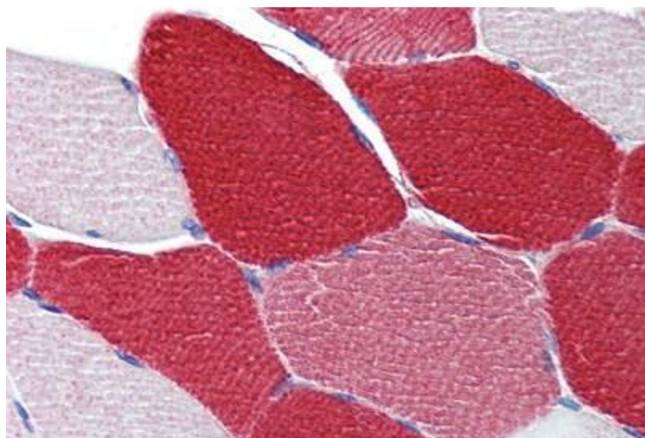
## Application Details

Application Notes:	Approved: IHC, IHC-P (5 µg/mL), WB (1 µg/mL)  Usage: Immunohistochemistry: This antibody was validated for use in immunohistochemistry on a panel of 21 formalin-fixed, paraffin-embedded (FFPE) human tissues after heat induced antigen retrieval in pH 6.0 citrate buffer. After incubation with the primary antibody, slides were incubated with biotinylated secondary antibody, followed by alkaline phosphatase-streptavidin and chromogen. The stained slides were evaluated by a pathologist to confirm staining specificity. The optimal working concentration for this antibody was determined to be 5 µg/mL. Western Blot: Suggested dilution at 1 µg/mL in 5 % skim milk / PBS buffer, and HRP conjugated anti-Rabbit IgG should be diluted in 1: 50,000 - 100,000 as second antibody. ELISA titer in peptide based assay: 1:1562500.
Comment:	Target Species of Antibody: Human
Restrictions:	For Research Use only

## Handling

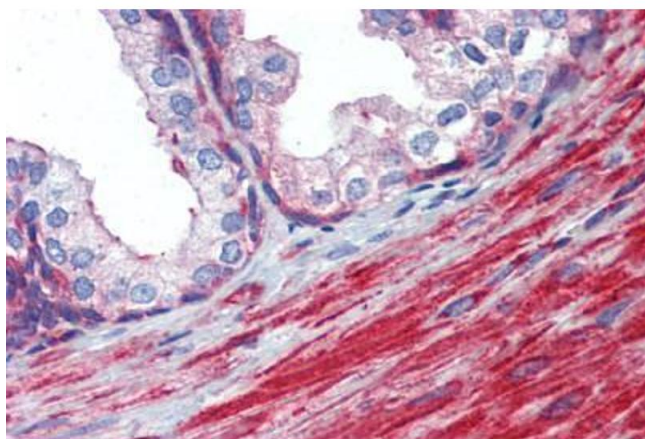
Format:	Lyophilized
Reconstitution:	Reconstitute with 50 µL sterile ddH <sub>2</sub> O.
Concentration:	Lot specific
Buffer:	Lyophilized from PBS with 2 % sucrose
Handling Advice:	Avoid repeat freeze-thaw cycles.
Storage:	4 °C, -20 °C
Storage Comment:	Long term: -20°C, the use of 50% glycerol is recommended if storing aliquots in -20°C for long term use (up to 1 year) Short term (less than 1 week): 4°C. Avoid freeze-thaw cycles.

## Images



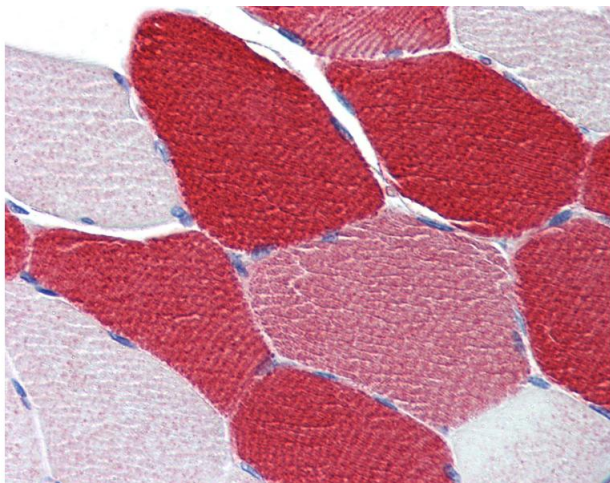
### Immunohistochemistry (Formalin-fixed Paraffin-embedded Sections)

**Image 1.** Skeletal muscle, Human: Formalin-Fixed, Paraffin-Embedded (FFPE)



### Immunohistochemistry (Formalin-fixed Paraffin-embedded Sections)

**Image 2.** Prostate, Human: Formalin-Fixed, Paraffin-Embedded (FFPE)



#### Immunohistochemistry

**Image 3.** Anti-MYL6 antibody IHC of human skeletal muscle. Immunohistochemistry of formalin-fixed, paraffin-embedded tissue after heat-induced antigen retrieval. Antibody concentration 5 ug/ml. This image was taken for the unconjugated form of this product. O ...