

Datasheet for ABIN6744463
anti-KIF20A antibody (C-Term)[Go to Product page](#)

4 Images

Overview

Quantity:	100 µL
Target:	KIF20A
Binding Specificity:	C-Term
Reactivity:	Human, Rat, Dog, Horse, Pig, Rabbit, Cow
Host:	Rabbit
Clonality:	Polyclonal
Conjugate:	This KIF20A antibody is un-conjugated
Application:	Western Blotting (WB), Immunohistochemistry (IHC), Immunohistochemistry (Paraffin-embedded Sections) (IHC (p))

Product Details

Brand:	IHC-plus™
Immunogen:	Synthetic peptide from C-Terminus of human KIF20A (O95235, NP_005724). Percent identity by BLAST analysis: Human, Chimpanzee, Gorilla, Gibbon, Monkey, Elephant, Panda, Dog, Bovine, Rabbit, Horse, Pig, Opossum (100%), Galago, Marmoset, Mouse, Bat, Guinea pig (93%), Turkey, Chicken (92%), Rat (86%), Zebra finch (84%). Type of Immunogen: Synthetic peptide
Isotype:	IgG
Specificity:	Human KIF20A
Predicted Reactivity:	Percent identity by BLAST analysis: Human, Dog, Rabbit, Horse, Pig (100%) Chicken (92%) Rat

Product Details

(86%).

Purification: Immunoaffinity purified

Target Details

Target: KIF20A

Alternative Name: RAB6KIFL / KIF20A ([KIF20A Products](#))

Background: Name/Gene ID: KIF20A

Synonyms: KIF20A, Kinesin family member 20A, Kinesin-like protein KIF20A, GG10_2, Mitotic kinesin-like protein 2, MKLP2, Rabkinesin-6, RAB6KIFL

Gene ID: 10112

NCBI Accession: [NP_005724](#)

UniProt: [O95235](#)

Application Details

Application Notes: Approved: IHC, IHC-P (5 µg/mL), WB (1 µg/mL)

Usage: Immunohistochemistry: This antibody was validated for use in immunohistochemistry on a panel of 21 formalin-fixed, paraffin-embedded (FFPE) human tissues after heat induced antigen retrieval in pH 6.0 citrate buffer. After incubation with the primary antibody, slides were incubated with biotinylated secondary antibody, followed by alkaline phosphatase-streptavidin and chromogen. The stained slides were evaluated by a pathologist to confirm staining specificity. The optimal working concentration for this antibody was determined to be 5 µg/mL. Western Blot: Suggested dilution at 1 µg/mL in 5 % skim milk / PBS buffer, and HRP conjugated anti-Rabbit IgG should be diluted in 1: 50,000 - 100,000 as second antibody. ELISA titer in peptide based assay: 1:1562500.

Comment: Target Species of Antibody: Human

Restrictions: For Research Use only

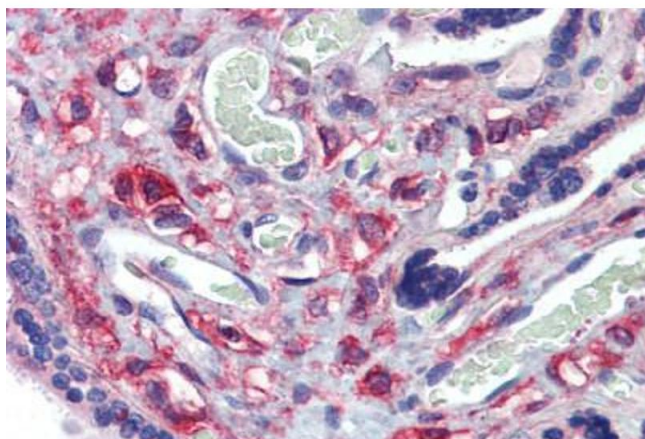
Handling

Format: Lyophilized

Handling

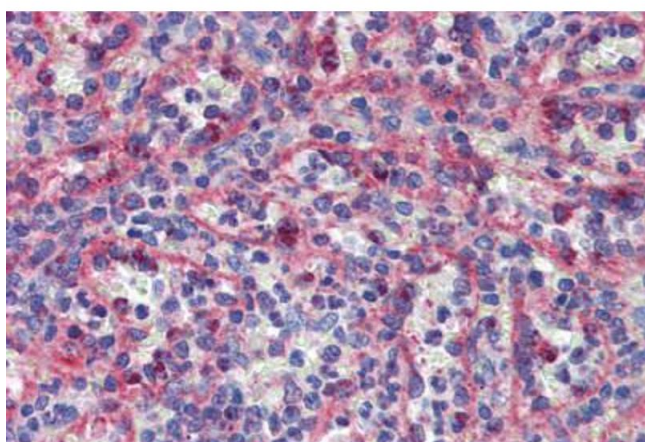
Reconstitution:	Reconstitute with 50 µL sterile ddH ₂ O.
Concentration:	Lot specific
Buffer:	Lyophilized from PBS with 2 % sucrose
Handling Advice:	Avoid repeat freeze-thaw cycles.
Storage:	4 °C, -20 °C
Storage Comment:	Long term: -20°C, the use of 50% glycerol is recommended if storing aliquots in -20°C for long term use (up to 1 year) Short term (less than 1 week): 4°C. Avoid freeze-thaw cycles.

Images



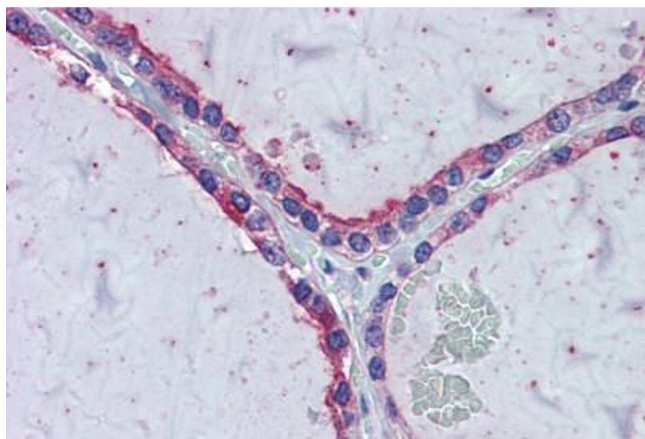
Immunohistochemistry (Formalin-fixed Paraffin-embedded Sections)

Image 1. Placenta, Human: Formalin-Fixed, Paraffin-Embedded (FFPE)



Immunohistochemistry (Formalin-fixed Paraffin-embedded Sections)

Image 2. Spleen, Human: Formalin-Fixed, Paraffin-Embedded (FFPE)



Immunohistochemistry (Formalin-fixed Paraffin-embedded Sections)

Image 3. Thyroid, Human: Formalin-Fixed, Paraffin-Embedded (FFPE)

Please check the [product details page](#) for more images. Overall 4 images are available for ABIN6744463.