

Datasheet for ABIN6744465
anti-CPXCR1 antibody (AA 396-445)



[Go to Product page](#)

3 Images

Overview

Quantity:	100 µL
Target:	CPXCR1
Binding Specificity:	AA 396-445
Reactivity:	Human
Host:	Rabbit
Clonality:	Polyclonal
Conjugate:	This CPXCR1 antibody is un-conjugated
Application:	Western Blotting (WB), Immunohistochemistry (IHC), Immunohistochemistry (Paraffin-embedded Sections) (IHC (p))

Product Details

Brand:	IHC-plus™
Immunogen:	Synthetic peptide located between aa396-445 of human CPXCR1 (Q8N123, NP_149037). Percent identity by BLAST analysis: Human, Chimpanzee, Gorilla (100%), Gibbon, Monkey (85%). Type of Immunogen: Synthetic peptide
Isotype:	IgG
Specificity:	Human CPXCR1
Predicted Reactivity:	Percent identity by BLAST analysis: Human (100%) Monkey (85%).
Purification:	Immunoaffinity purified

Target Details

Target:	CPXCR1
Alternative Name:	CPXCR1 / CT77 (CPXCR1 Products)
Background:	Name/Gene ID: CPXCR1 Synonyms: CPXCR1, Cancer/testis antigen 77, CT77
Gene ID:	53336
NCBI Accession:	NP_149037
UniProt:	Q8N123

Application Details

Application Notes: Approved: IHC, IHC-P (10 µg/mL), WB (1 µg/mL)

Usage: Immunohistochemistry: This antibody was validated for use in immunohistochemistry on a panel of 21 formalin-fixed, paraffin-embedded (FFPE) human tissues after heat induced antigen retrieval in pH 6.0 citrate buffer. After incubation with the primary antibody, slides were incubated with biotinylated secondary antibody, followed by alkaline phosphatase-streptavidin and chromogen. The stained slides were evaluated by a pathologist to confirm staining specificity. The optimal working concentration for this antibody was determined to be 10 µg/mL. Western Blot: Suggested dilution at 1 µg/mL in 5 % skim milk / PBS buffer, and HRP conjugated anti-Rabbit IgG should be diluted in 1: 50,000 - 100,000 as second antibody. ELISA titer in peptide based assay: 1:312500.

Comment: Target Species of Antibody: Human

Restrictions: For Research Use only

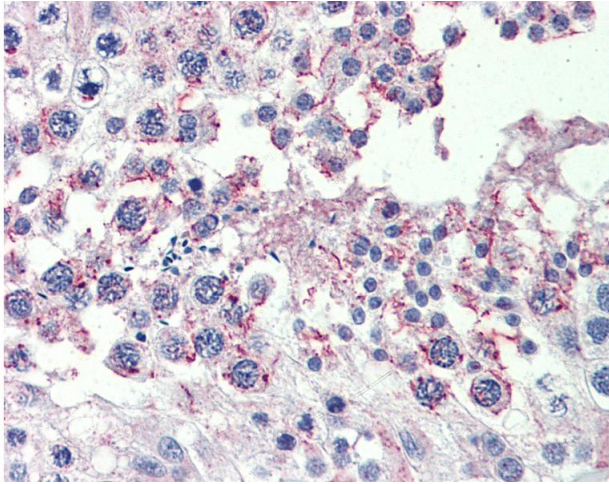
Handling

Format:	Lyophilized
Reconstitution:	Distilled water
Concentration:	Lot specific
Buffer:	Lyophilized from PBS with 2 % sucrose
Handling Advice:	Avoid repeat freeze-thaw cycles.
Storage:	4 °C, -20 °C

Handling

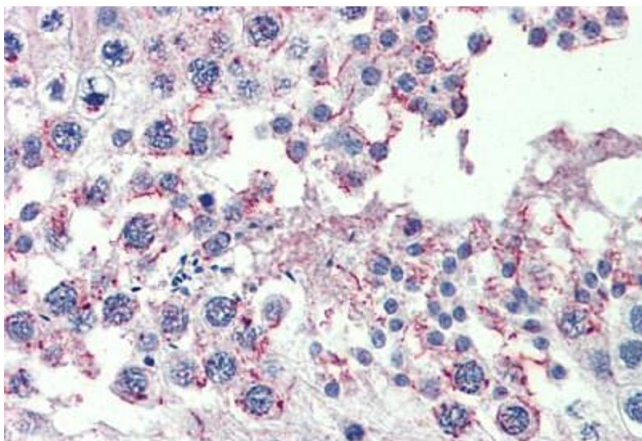
Storage Comment: Long term: -20°C, the use of 50% glycerol is recommended if storing aliquots in -20°C for long term use (up to 1 year)
Short term (less than 1 week): 4°C. Avoid freeze-thaw cycles.

Images



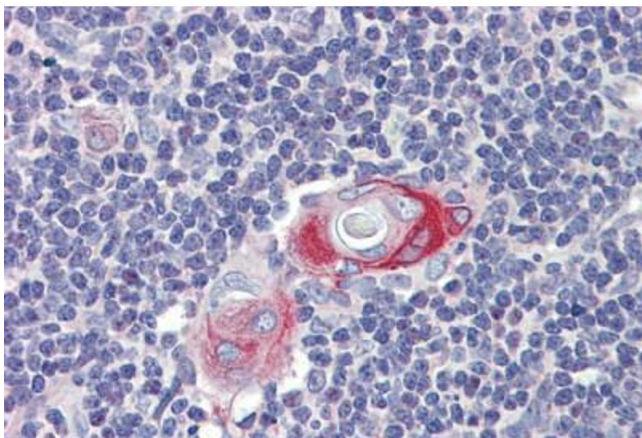
Immunohistochemistry

Image 1. Anti-CPXCR1 antibody IHC of human testis. Immunohistochemistry of formalin-fixed, paraffin-embedded tissue after heat-induced antigen retrieval. Antibody concentration 10 ug/ml. This image was taken for the unconjugated form of this product. Other f ...



Immunohistochemistry (Formalin-fixed Paraffin-embedded Sections)

Image 2. Testis, Human: Formalin-Fixed, Paraffin-Embedded (FFPE)



Immunohistochemistry (Formalin-fixed Paraffin-embedded Sections)

Image 3. Thymus, Human: Formalin-Fixed, Paraffin-Embedded (FFPE)