



[Go to Product page](#)

Datasheet for ABIN6744472

anti-FAM188B2 antibody (AA 223-272)

1 Image

Overview

Quantity:	100 µL
Target:	FAM188B2
Binding Specificity:	AA 223-272
Reactivity:	Cow, Human, Monkey
Host:	Rabbit
Clonality:	Polyclonal
Conjugate:	This FAM188B2 antibody is un-conjugated
Application:	Western Blotting (WB)

Product Details

Immunogen:	Synthetic peptide located between aa223-272 of human FAM188B2. Percent identity by BLAST analysis: Human, Gorilla, Marmoset (100%), Galago (92%). Type of Immunogen: Synthetic peptide
Specificity:	Human FAM188B2
Predicted Reactivity:	Percent identity by BLAST analysis:
Purification:	Immunoaffinity purified

Target Details

Target:	FAM188B2
Alternative Name:	FAM188B2 / CLRN1 (FAM188B2 Products)

Target Details

Background:	Name/Gene ID: FAM188B2 Synonyms: FAM188B2, C3orf76, Putative UPF0526 protein B
Gene ID:	646951
UniProt:	A8MYZ0

Application Details

Application Notes:	Approved: WB (0.2 - 1 µg/mL) Usage: Western Blot: Suggested dilution at 1 µg/mL in 5 % skim milk / PBS buffer, and HRP conjugated anti-Rabbit IgG should be diluted in 1: 50,000 - 100,000 as secondary antibody.
Comment:	Target Species of Antibody: Human
Restrictions:	For Research Use only

Handling

Format:	Lyophilized
Reconstitution:	Distilled water
Concentration:	Lot specific
Buffer:	Lyophilized from PBS with 2 % sucrose
Handling Advice:	Avoid repeat freeze-thaw cycles.
Storage:	4 °C, -20 °C
Storage Comment:	Long term: -20°C, the use of 50% glycerol is recommended if storing aliquots in -20°C for long term use (up to 1 year) Short term (less than 1 week): 4°C. Avoid freeze-thaw cycles.

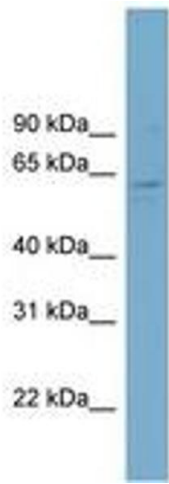


Image 1.