

Datasheet for ABIN6744475
anti-P2RX7 antibody (AA 71-120)[Go to Product page](#)

1 Image

Overview

Quantity:	100 µL
Target:	P2RX7
Binding Specificity:	AA 71-120
Reactivity:	Human
Host:	Rabbit
Clonality:	Polyclonal
Conjugate:	This P2RX7 antibody is un-conjugated
Application:	Western Blotting (WB)

Product Details

Immunogen:	Synthetic peptide located between aa71-120 of human P2RX7 (Q99572). Percent identity by BLAST analysis: Human, Chimpanzee, Gorilla, Gibbon, Monkey (100%), Galago, Marmoset (92%), Rabbit (90%), Mouse, Horse (85%), Rat (84%). Type of Immunogen: Synthetic peptide
Specificity:	Human P2RX7 / P2X7
Predicted Reactivity:	Percent identity by BLAST analysis: Human (100%) Rabbit (90%) Mouse, Horse (85%) Rat (84%).
Purification:	Immunoaffinity purified

Target Details

Target:	P2RX7
---------	-------

Target Details

Alternative Name:	P2RX7 / P2X7 (P2RX7 Products)
Background:	Name/Gene ID: P2RX7 Subfamily: P2X receptor Family: Ion Channel Synonyms: P2RX7, ATP receptor, p2X purinoceptor 7, p2X receptor 7, p2X7 purinoceptor, p2Z receptor, Purinergic receptor, p2RX7, p2X7, p2X7 receptor
Gene ID:	5027
UniProt:	Q99572
Pathways:	Regulation of Leukocyte Mediated Immunity , Positive Regulation of Immune Effector Process , Synaptic Vesicle Exocytosis

Application Details

Application Notes:	Approved: WB (0.2 - 1 µg/mL) Usage: Western Blot: Suggested dilution at 1 µg/mL in 5 % skim milk / PBS buffer, and HRP conjugated anti-Rabbit IgG should be diluted in 1: 50,000 - 100,000 as secondary antibody. Not recommended for: IHC-P
Comment:	Target Species of Antibody: Human
Restrictions:	For Research Use only

Handling

Format:	Lyophilized
Reconstitution:	Distilled water
Concentration:	Lot specific
Buffer:	Lyophilized from PBS with 2 % sucrose
Handling Advice:	Avoid repeat freeze-thaw cycles.
Storage:	4 °C,-20 °C
Storage Comment:	Long term: -20°C, the use of 50% glycerol is recommended if storing aliquots in -20°C for long term use (up to 1 year)

Handling

Short term (less than 1 week): 4°C. Avoid freeze-thaw cycles.

Images

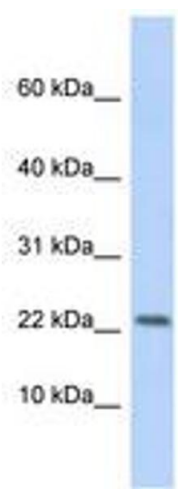


Image 1.