



[Go to Product page](#)

Datasheet for ABIN6744484

anti-beta Arrestin 1 antibody (C-Term)

1 Image

Overview

Quantity:	100 µL
Target:	beta Arrestin 1 (ARRB1)
Binding Specificity:	C-Term
Reactivity:	Human, Horse, Dog, Bat
Host:	Rabbit
Clonality:	Polyclonal
Conjugate:	This beta Arrestin 1 antibody is un-conjugated
Application:	Western Blotting (WB)

Product Details

Immunogen:	Synthetic peptide from C-Terminus of human ARRB1 (P49407, NP_004032). Percent identity by BLAST analysis: Human, Chimpanzee, Gorilla, Gibbon, Galago, Marmoset, Dog, Bat, Horse (100%), Monkey, Bovine, Elephant (90%). Type of Immunogen: Synthetic peptide
Specificity:	Human ARRB1 / Beta-Arrestin 1
Predicted Reactivity:	Percent identity by BLAST analysis: Human, Dog, Horse (100%) Bovine (90%).
Purification:	Immunoaffinity purified

Target Details

Target:	beta Arrestin 1 (ARRB1)
---------	-------------------------

Target Details

Alternative Name:	ARRB1 / Beta Arrestin 1 (ARRB1 Products)
Background:	Name/Gene ID: ARRB1 Synonyms: ARRB1, Arrestin 2, Arrestin beta-1, Arb1, ARR1, Beta-arrestin-1, Arrestin, beta 1
Gene ID:	408
NCBI Accession:	NP_004032
UniProt:	P49407
Pathways:	Positive Regulation of Peptide Hormone Secretion , Nuclear Hormone Receptor Binding , cAMP Metabolic Process , Myometrial Relaxation and Contraction , Synaptic Membrane , Regulation of G-Protein Coupled Receptor Protein Signaling , Phototransduction

Application Details

Application Notes:	Approved: WB (0.2 - 1 µg/mL) Usage: Western Blot: Suggested dilution at 1 µg/mL in 5 % skim milk / PBS buffer, and HRP conjugated anti-Rabbit IgG should be diluted in 1: 50,000 - 100,000 as secondary antibody.
Comment:	Target Species of Antibody: Human
Restrictions:	For Research Use only

Handling

Format:	Lyophilized
Reconstitution:	Distilled water
Concentration:	Lot specific
Buffer:	Lyophilized from PBS with 2 % sucrose
Handling Advice:	Avoid repeat freeze-thaw cycles.
Storage:	4 °C, -20 °C
Storage Comment:	Long term: -20°C, the use of 50% glycerol is recommended if storing aliquots in -20°C for long term use (up to 1 year) Short term (less than 1 week): 4°C. Avoid freeze-thaw cycles.

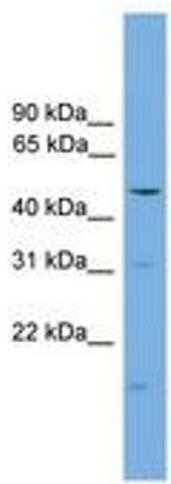


Image 1.