

Datasheet for ABIN6744485  
**anti-CLK4 antibody (AA 107-156)**[Go to Product page](#)

## 1 Image

## Overview

Quantity:	100 µL
Target:	CLK4
Binding Specificity:	AA 107-156
Reactivity:	Mouse, Human, Rabbit, Dog, Guinea Pig, Rat, Pig, Monkey
Host:	Rabbit
Clonality:	Polyclonal
Conjugate:	This CLK4 antibody is un-conjugated
Application:	Western Blotting (WB)

## Product Details

Immunogen:	Synthetic peptide located between aa107-156 of human CLK4 (Q9HAZ1, NP_065717). Percent identity by BLAST analysis: Human, Chimpanzee, Gorilla, Monkey, Galago, Marmoset, Dog, Elephant, Panda, Rabbit, Pig, Guinea pig (100%), Gibbon, Bovine, Bat, Horse, Opossum, Turkey, Chicken (92%), Mouse, Rat, Platypus (85%).  Type of Immunogen: Synthetic peptide
Specificity:	Human CLK4
Predicted Reactivity:	Percent identity by BLAST analysis: Human, Dog, Pig (100%) Bovine, Horse, Chicken (92%) Mouse, Rat (85%).
Purification:	Immunoaffinity purified

## Target Details

Target:	CLK4
Alternative Name:	CLK4 ( <a href="#">CLK4 Products</a> )
Background:	Name/Gene ID: CLK4 Subfamily: LAMMER/Clk Family: Protein Kinase  Synonyms: CLK4, CDC-like kinase 4
Gene ID:	57396
NCBI Accession:	<a href="#">NP_065717</a>
UniProt:	<a href="#">Q9HAZ1</a>

## Application Details

Application Notes:	Approved: WB (0.2 - 1 µg/mL)  Usage: Western Blot: Suggested dilution at 1 µg/mL in 5 % skim milk / PBS buffer, and HRP conjugated anti-Rabbit IgG should be diluted in 1: 50,000 - 100,000 as secondary antibody.
Comment:	Target Species of Antibody: Human
Restrictions:	For Research Use only

## Handling

Format:	Lyophilized
Reconstitution:	Distilled water
Concentration:	Lot specific
Buffer:	Lyophilized from PBS with 2 % sucrose
Handling Advice:	Avoid repeat freeze-thaw cycles.
Storage:	4 °C, -20 °C
Storage Comment:	Long term: -20°C, the use of 50% glycerol is recommended if storing aliquots in -20°C for long term use (up to 1 year) Short term (less than 1 week): 4°C. Avoid freeze-thaw cycles.

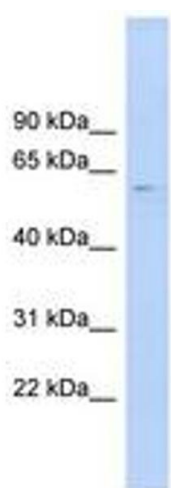


Image 1.