



[Go to Product page](#)

Datasheet for ABIN6744498

anti-SATB1 antibody (C-Term)

1 Image

Overview

Quantity:	100 µL
Target:	SATB1
Binding Specificity:	C-Term
Reactivity:	Human, Mouse, Rat, Rabbit, Pig, Dog
Host:	Rabbit
Clonality:	Polyclonal
Conjugate:	This SATB1 antibody is un-conjugated
Application:	Western Blotting (WB)

Product Details

Immunogen:	Synthetic peptide from C-Terminus of human SATB1 (Q01826, NP_002962). Percent identity by BLAST analysis: Human, Chimpanzee, Gorilla, Gibbon, Galago, Marmoset, Mouse, Rat, Elephant, Dog, Rabbit, Pig, Opossum, Platypus (100%), Monkey, Bat, Guinea pig (92%), Lizard (85%), Turkey, Zebra finch, Chicken (84%). Type of Immunogen: Synthetic peptide
Specificity:	Human SATB1
Predicted Reactivity:	Percent identity by BLAST analysis: Human, Mouse, Rat, Dog, Rabbit, Pig (100%) Guinea pig (92%) Chicken (84%).
Purification:	Immunoaffinity purified

Target Details

Target:	SATB1
Alternative Name:	SATB1 (SATB1 Products)
Background:	Name/Gene ID: SATB1 Synonyms: SATB1, DNA-binding protein SATB1, SATB homeobox 1
Gene ID:	6304
NCBI Accession:	NP_002962
UniProt:	Q01826
Pathways:	Caspase Cascade in Apoptosis, Activated T Cell Proliferation

Application Details

Application Notes:	Approved: WB (0.2 - 1 µg/mL) Usage: Western Blot: Suggested dilution at 1 µg/mL in 5 % skim milk / PBS buffer, and HRP conjugated anti-Rabbit IgG should be diluted in 1: 50,000 - 100,000 as secondary antibody. Not recommended for: IHC-P
Comment:	Target Species of Antibody: Human
Restrictions:	For Research Use only

Handling

Format:	Lyophilized
Reconstitution:	Distilled water
Concentration:	Lot specific
Buffer:	Lyophilized from PBS with 2 % sucrose
Handling Advice:	Avoid repeat freeze-thaw cycles.
Storage:	4 °C, -20 °C
Storage Comment:	Long term: -20°C, the use of 50% glycerol is recommended if storing aliquots in -20°C for long term use (up to 1 year) Short term (less than 1 week): 4°C. Avoid freeze-thaw cycles.

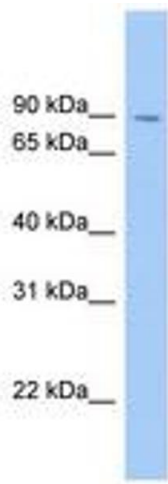


Image 1.