

Datasheet for ABIN6744500

anti-HAND1 antibody (AA 35-84)



[Go to Product page](#)

1 Image

Overview

Quantity:	100 µL
Target:	HAND1
Binding Specificity:	AA 35-84
Reactivity:	Human, Mouse, Rat, Cow, Rabbit, Sheep, Guinea Pig, Monkey
Host:	Rabbit
Clonality:	Polyclonal
Conjugate:	This HAND1 antibody is un-conjugated
Application:	Western Blotting (WB)

Product Details

Immunogen:	Synthetic peptide located between aa35-84 of human HAND1 (O96004, NP_004812). Percent identity by BLAST analysis: Human, Chimpanzee, Gorilla, Gibbon, Monkey, Marmoset, Mouse, Rat, Sheep, Bovine, Guinea pig (100%), Galago, Elephant, Dog, Horse, Pig (92%), Bat, Rabbit (84%). Type of Immunogen: Synthetic peptide
Specificity:	Human HAND1
Predicted Reactivity:	Percent identity by BLAST analysis: Human, Mouse, Rat, Sheep, Bovine (100%) Dog, Horse, Pig (92%) Rabbit (84%).
Purification:	Immunoaffinity purified

Target Details

Target:	HAND1
Alternative Name:	HAND1 (HAND1 Products)
Background:	Name/Gene ID: HAND1 Family: Transcription factor Synonyms: HAND1, EHand, Hxt, BHLHa27, Thing1
Gene ID:	9421
NCBI Accession:	NP_004812
UniProt:	O96004
Pathways:	Tube Formation

Application Details

Application Notes:	Approved: WB (0.2 - 1 µg/mL) Usage: Western Blot: Suggested dilution at 1 µg/mL in 5 % skim milk / PBS buffer, and HRP conjugated anti-Rabbit IgG should be diluted in 1: 50,000 - 100,000 as secondary antibody. Not recommended for: IHC-P
Comment:	Target Species of Antibody: Human
Restrictions:	For Research Use only

Handling

Format:	Lyophilized
Reconstitution:	Distilled water
Concentration:	Lot specific
Buffer:	Lyophilized from PBS with 2 % sucrose
Handling Advice:	Avoid repeat freeze-thaw cycles.
Storage:	4 °C, -20 °C
Storage Comment:	Long term: -20°C, the use of 50% glycerol is recommended if storing aliquots in -20°C for long term use (up to 1 year)

Handling

Short term (less than 1 week): 4°C. Avoid freeze-thaw cycles.

Images

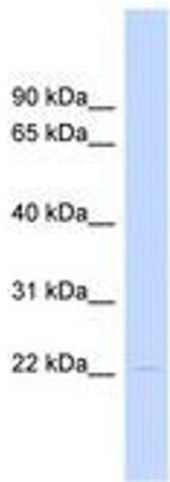


Image 1.