



[Go to Product page](#)

Datasheet for ABIN6744502

anti-Aspartate beta Hydroxylase antibody (AA 287-336)

1 Image

Overview

Quantity:	100 µL
Target:	Aspartate beta Hydroxylase (ASPH)
Binding Specificity:	AA 287-336
Reactivity:	Human
Host:	Rabbit
Clonality:	Polyclonal
Conjugate:	This Aspartate beta Hydroxylase antibody is un-conjugated
Application:	Western Blotting (WB)

Product Details

Immunogen:	Synthetic peptide located between aa287-336 of human ASPH (Q12797, NP_004309). Percent identity by BLAST analysis: Human, Gorilla, Orangutan (100%), Gibbon, Marmoset, Bat, Horse (92%). Type of Immunogen: Synthetic peptide
Specificity:	Human ASPH
Predicted Reactivity:	Percent identity by BLAST analysis: Human (100%) Horse (92%).
Purification:	Immunoaffinity purified

Target Details

Target:	Aspartate beta Hydroxylase (ASPH)
---------	-----------------------------------

Target Details

Alternative Name:	Junctin / ASPH (ASPH Products)
Background:	Name/Gene ID: ASPH Synonyms: ASPH, A beta H-J-J, AAH, ASP beta-hydroxylase, BAH, Aspartate beta-hydroxylase, CASQ2BP1, Cardiac junctin, HAAH, Humbug, JCTN, Junctate, Junctin
Gene ID:	444
NCBI Accession:	NP_004309
UniProt:	Q12797
Pathways:	Positive Regulation of Endopeptidase Activity

Application Details

Application Notes:	Approved: WB (0.2 - 1 µg/mL) Usage: Western Blot: Suggested dilution at 1 µg/mL in 5 % skim milk / PBS buffer, and HRP conjugated anti-Rabbit IgG should be diluted in 1: 50,000 - 100,000 as secondary antibody.
Comment:	Target Species of Antibody: Human
Restrictions:	For Research Use only

Handling

Format:	Lyophilized
Reconstitution:	Distilled water
Concentration:	Lot specific
Buffer:	Lyophilized from PBS with 2 % sucrose
Handling Advice:	Avoid repeat freeze-thaw cycles.
Storage:	4 °C, -20 °C
Storage Comment:	Long term: -20°C, the use of 50% glycerol is recommended if storing aliquots in -20°C for long term use (up to 1 year) Short term (less than 1 week): 4°C. Avoid freeze-thaw cycles.

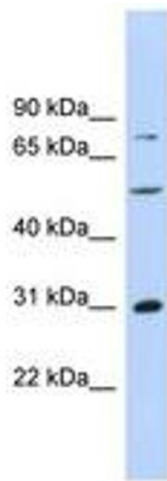


Image 1.