



Datasheet for ABIN6744510
anti-AKAP10 antibody (AA 575-624)



[Go to Product page](#)

1 Image

Overview

Quantity:	100 µL
Target:	AKAP10
Binding Specificity:	AA 575-624
Reactivity:	Human
Host:	Rabbit
Clonality:	Polyclonal
Conjugate:	This AKAP10 antibody is un-conjugated
Application:	Western Blotting (WB)

Product Details

Immunogen:	Synthetic peptide located between aa575-624 of human AKAP10 (O43572, NP_009133). Percent identity by BLAST analysis: Human, Chimpanzee, Gorilla (100%), Monkey, Galago, Marmoset, Mouse, Rat, Elephant, Dog, Bovine, Bat, Rabbit, Horse, Pig, Opossum, Turkey, Zebra finch, Chicken, Platypus (92%), Zebrafish (90%), Xenopus, Stickleback (85%). Type of Immunogen: Synthetic peptide
Specificity:	Human AKAP10
Predicted Reactivity:	Percent identity by BLAST analysis: Human (100%) Rat, Dog, Bovine, Rabbit, Horse, Chicken (92%) Zebrafish (90%).
Purification:	Immunoaffinity purified

Target Details

Target: AKAP10

Alternative Name: AKAP10 ([AKAP10 Products](#))

Background: Name/Gene ID: AKAP10

Synonyms: AKAP10, AKAP-10, D-AKAP-2, PRKA10, D-AKAP2

Gene ID: 11216

NCBI Accession: [NP_009133](#)

UniProt: [O43572](#)

Pathways: [Regulation of G-Protein Coupled Receptor Protein Signaling](#)

Application Details

Application Notes: Approved: WB (0.2 - 1 µg/mL)

Usage: Western Blot: Suggested dilution at 1 µg/mL in 5 % skim milk / PBS buffer, and HRP conjugated anti-Rabbit IgG should be diluted in 1: 50,000 - 100,000 as secondary antibody.

Comment: Target Species of Antibody: Human

Restrictions: For Research Use only

Handling

Format: Lyophilized

Reconstitution: Distilled water

Concentration: Lot specific

Buffer: Lyophilized from PBS with 2 % sucrose

Handling Advice: Avoid repeat freeze-thaw cycles.

Storage: 4 °C, -20 °C

Storage Comment: Long term: -20°C, the use of 50% glycerol is recommended if storing aliquots in -20°C for long term use (up to 1 year)

Short term (less than 1 week): 4°C. Avoid freeze-thaw cycles.

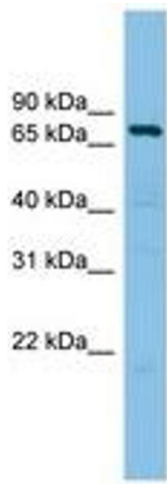


Image 1.