



[Go to Product page](#)

Datasheet for ABIN6744526
anti-FOXQ1 antibody (AA 201-250)

1 Image

Overview

Quantity:	100 µL
Target:	FOXQ1
Binding Specificity:	AA 201-250
Reactivity:	Mouse, Rat
Host:	Rabbit
Clonality:	Polyclonal
Conjugate:	This FOXQ1 antibody is un-conjugated
Application:	Western Blotting (WB)

Product Details

Immunogen:	Synthetic peptide located between aa201-250 of mouse Foxq1 (Q9JJ18, NP_032265). Percent identity by BLAST analysis: Mouse, Rat (100%). Type of Immunogen: Synthetic peptide
Specificity:	Mouse FOXQ1
Predicted Reactivity:	Percent identity by BLAST analysis: Mouse, Rat (100%).
Purification:	Immunoaffinity purified

Target Details

Target:	FOXQ1
Alternative Name:	FOXQ1 (FOXQ1 Products)

Target Details

Background:	Name/Gene ID: FOXQ1 Synonyms: FOXQ1, Forkhead box Q1, HFH-1, HNF-3/forkhead-like protein 1, HFH1, Forkhead box protein Q1
Gene ID:	94234
NCBI Accession:	NP_032265
UniProt:	Q9C009
Pathways:	Positive Regulation of Endopeptidase Activity

Application Details

Application Notes:	Approved: WB (0.2 - 1 µg/mL) Usage: Western Blot: Suggested dilution at 1 µg/mL in 5 % skim milk / PBS buffer, and HRP conjugated anti-Rabbit IgG should be diluted in 1: 50,000 - 100,000 as secondary antibody.
Comment:	Target Species of Antibody: Mouse
Restrictions:	For Research Use only

Handling

Format:	Lyophilized
Reconstitution:	Distilled water
Concentration:	Lot specific
Buffer:	Lyophilized from PBS with 2 % sucrose
Handling Advice:	Avoid repeat freeze-thaw cycles.
Storage:	4 °C, -20 °C
Storage Comment:	Long term: -20°C, the use of 50% glycerol is recommended if storing aliquots in -20°C for long term use (up to 1 year) Short term (less than 1 week): 4°C. Avoid freeze-thaw cycles.

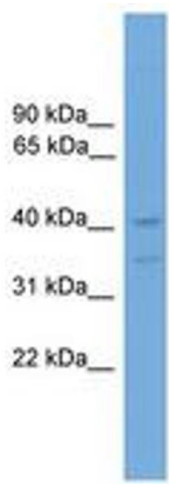


Image 1.