



[Go to Product page](#)

Datasheet for ABIN6744534
anti-IRF1 antibody (AA 251-300)

1 Image

Overview

Quantity:	100 µL
Target:	IRF1
Binding Specificity:	AA 251-300
Reactivity:	Mouse, Rat, Rabbit
Host:	Rabbit
Clonality:	Polyclonal
Conjugate:	This IRF1 antibody is un-conjugated
Application:	Western Blotting (WB)

Product Details

Immunogen:	Synthetic peptide located between aa251-300 of mouse Irf1 (P15314, NP_032416). Percent identity by BLAST analysis: Mouse, Rat (100%), Human, Gorilla, Gibbon, Baboon, Monkey (92%), Ferret, Sheep, Panda, Bovine (90%), Marmoset, Rabbit, Guinea pig, Armadillo (85%), Galago (84%). Type of Immunogen: Synthetic peptide
Specificity:	Mouse IRF1
Predicted Reactivity:	Percent identity by BLAST analysis: Mouse, Rat (100%) Human (92%) Sheep, Bovine (90%) Rabbit (85%).
Purification:	Immunoaffinity purified

Target Details

Target:	IRF1
Alternative Name:	IRF1 / IRF-1 / MAR (IRF1 Products)
Background:	Name/Gene ID: IRF1 Synonyms: IRF1, Interferon regulatory factor 1, IRF-1, MAR
Gene ID:	3659
NCBI Accession:	NP_032416
UniProt:	P10914
Pathways:	Interferon-gamma Pathway , Response to Growth Hormone Stimulus , Positive Regulation of Immune Effector Process , Hepatitis C , Autophagy

Application Details

Application Notes:	Approved: WB (0.2 - 1 µg/mL) Usage: Western Blot: Suggested dilution at 1 µg/mL in 5 % skim milk / PBS buffer, and HRP conjugated anti-Rabbit IgG should be diluted in 1: 50,000 - 100,000 as secondary antibody.
Comment:	Target Species of Antibody: Mouse
Restrictions:	For Research Use only

Handling

Format:	Lyophilized
Reconstitution:	Distilled water
Concentration:	Lot specific
Buffer:	Lyophilized from PBS with 2 % sucrose
Handling Advice:	Avoid repeat freeze-thaw cycles.
Storage:	4 °C,-20 °C
Storage Comment:	Long term: -20°C, the use of 50% glycerol is recommended if storing aliquots in -20°C for long term use (up to 1 year) Short term (less than 1 week): 4°C. Avoid freeze-thaw cycles.

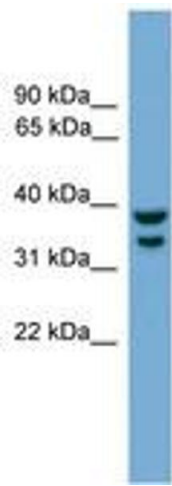


Image 1.