

Datasheet for ABIN6744537
anti-Menin antibody (AA 351-400)[Go to Product page](#)

1 Image

Overview

Quantity:	100 µL
Target:	Menin (MEN1)
Binding Specificity:	AA 351-400
Reactivity:	Human, Mouse, Cow, Guinea Pig, Horse
Host:	Rabbit
Clonality:	Polyclonal
Conjugate:	This Menin antibody is un-conjugated
Application:	Western Blotting (WB)

Product Details

Immunogen:	Synthetic peptide located between aa351-400 of mouse Men1 (O88559, NP_032609). Percent identity by BLAST analysis: Mouse (100%), Rat, Elephant, Pig (92%), Human, Gorilla, Gibbon, Baboon, Monkey, Marmoset, Bovine, Bat, Horse, Guinea pig (84%). Type of Immunogen: Synthetic peptide
Specificity:	Mouse MEN1 / Menin
Predicted Reactivity:	Percent identity by BLAST analysis: Mouse (100%) Rat, Pig (92%) Human, Bovine, Horse, Guinea pig (84%).
Purification:	Immunoaffinity purified

Target Details

Target:	Menin (MEN1)
Alternative Name:	MEN1 / Menin (MEN1 Products)
Background:	Name/Gene ID: MEN1 Synonyms: MEN1, MEAI, Menin, Multiple endocrine neoplasia I
Gene ID:	4221
NCBI Accession:	NP_032609
UniProt:	O00255
Pathways:	Chromatin Binding , Positive Regulation of Endopeptidase Activity

Application Details

Application Notes:	Approved: WB (0.2 - 1 µg/mL) Usage: Western Blot: Suggested dilution at 1 µg/mL in 5 % skim milk / PBS buffer, and HRP conjugated anti-Rabbit IgG should be diluted in 1: 50,000 - 100,000 as secondary antibody.
Comment:	Target Species of Antibody: Mouse
Restrictions:	For Research Use only

Handling

Format:	Lyophilized
Reconstitution:	Distilled water
Concentration:	Lot specific
Buffer:	Lyophilized from PBS with 2 % sucrose
Handling Advice:	Avoid repeat freeze-thaw cycles.
Storage:	4 °C, -20 °C
Storage Comment:	Long term: -20°C, the use of 50% glycerol is recommended if storing aliquots in -20°C for long term use (up to 1 year) Short term (less than 1 week): 4°C. Avoid freeze-thaw cycles.

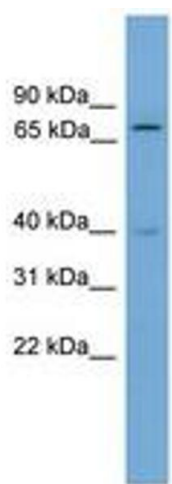


Image 1.